

## **GENETICS OF MALE INFERTILITY**

Sherman J. Silber, M.D.  
Infertility Center of St. Louis  
St. Luke's Hospital  
224 South Woods Mill Road, Suite 730  
St. Louis, MO 63017  
Telephone: 314-576-1400  
FAX: 314-576-1442  
Email: [silber@infertile.com](mailto:silber@infertile.com)

### **LEARNING OBJECTIVES**

1. The ART physician should understand the structure of the Y chromosome, why it harbors genes required for spermatogenesis, and why it so frequently has deletions which result in azoospermia and severe oligospermia.
2. The ART physician should understand the pitfalls in interpreting standard Y deletion testing, and be able to identify those STS markers which are robust and those which could represent polymorphisms or repeat sequences (false negative and false positive results).
3. The ART physician should have an understanding of the entire range of testis specific genes whose deletions or mutations are being missed (because of multiple repeats) by standard screening.
4. The ART physician should understand how to counsel infertile males undergoing ART regarding transmission of their infertility to ICSI offspring.

**PRE-COURSE QUESTIONS**

1. Male infertility can be transmitted either to ICSI offspring or to their children:
  - a. If a Y deletion is detected on routine screening.
  - b. If an X chromosomal testis-specific gene has a mutation.
  - c. Possibly in the majority of cases.
  - d. If the patient has only moderate oligospermia.
  - e. All of the above.
  
2. Y chromosome deletions associated with azoospermia:
  - a. Are generally transmitted to the infertile patient from his father who also has a & deletion in his peripheral lymphocytes.
  - b. First occur in the infertile patient's testes as a spontaneous mutation.
  - c. First occur in the testes of the infertile patient's father even though the father's sperm are found to have no Y deletions.
  - d. Result from testicular mosaicism in the infertile patient's father.

Answers:

1. E
2. C

## SUMMARY

The purpose of this lecture is to put in perspective the accumulating molecular data on Y chromosomal, X chromosomal, and autosomal spermatogenesis genes, and the genetic origin of oligospermia. The current gene search with simple STS mapping on the Y chromosome is just a starting point for locating many other spermatogenesis genes that are widespread throughout the genome. Now that the Y has finally been sequenced (2002), many more genes are being discovered that impact spermatogenesis.

The presence on the Y chromosome of testis specific genes, which arrive from autosomal homologues, or from persistence of ancestral X genes which eventually acquire male specific function, is a recurrent theme in the evolution of spermatogenesis of all animals with sex determining chromosomes. A summary of the evolutionary history of our X and Y-chromosomes explains why the Y chromosome was a good place to start in the molecular search for spermatogenesis genes. However, it is clear that numerous genes on the X chromosome as well, and on autosomes, also impinge on spermatogenesis and may thus be transmitted to ICSI offspring.

The presence of Y deletions in azoospermic and severely oligospermic ( $<2 \times 10^6$ ) men does not prevent fertilization or pregnancy either with ICSI, or occasionally with no treatment at all. The Y deletion (and presumably infertility) is thereby transmitted to the male offspring. However, there are many spermatogenesis genes involved in male infertility, and we have barely scratched the surface with what have been (up until very recently) very gross mapping techniques.

Whether or not these currently detectable gross “microdeletions” are found in an infertile male patient does not obviate the likelihood of there being a genetic cause for his azoospermia or severe oligospermia. If a defective gene (or genes) is located on his Y chromosome, then all of the male offspring will inherit his problem. However, if genes on the X chromosome are responsible for the infertility, then daughters will be carriers and grandsons may inherit the defect. If autosomal dominant genes are the cause of the infertility, then only half of the male offspring will be infertile, and half of the daughters will be carriers. There is no way of knowing what effect, if any at all, the carrier state for male infertility will have on the daughter.

All cases of male infertility need to be considered genetic until proven otherwise, and patients so counseled. A negative Y deletion assay as currently widely practiced, and a normal 46 XY karyotype does not in any way rule out that the infertility is genetically transmissible (because these techniques have such low resolution). With sequence-based techniques we are now identifying many genes that in a polygenic fashion determine the sperm count. The current enthusiasm for STS mapping of Y deletions is just a very crude beginning, and is only identifying huge deletions. Smaller deletions and point mutations are certain to be much more common causes of male infertility.

## EARLY GENETIC STUDIES OF AZOOSPERMIC AND SEVERELY OLIGOSPERMIC MEN

For several decades, it had been speculated that there was a genetic etiology to many cases of male infertility (1-2). This suspicion originally arose from cytogenetic evidence reported over 25 years ago in a very small percentage (0.2%) of azoospermic men who were otherwise phenotypically normal, but who had grossly obvious terminal Y chromosome deletions (Fig. 1a,

1b) (3). Simple karyotyping of infertile men also raised the possibility of infertility being associated with autosomal translocations (4-10). A massive summary of karyotyping results in newborn populations, reviewed by Van Assche, revealed an incidence of balanced autosomal translocations in a normal newborn population of 0.25% but an incidence of 1.3%, in infertile men (Table 1A) (4). In fact, karyotyping of oligospermic males (i.e. less than 20 million per cc) reveal a 3% incidence of some type of autosomal chromosome anomaly, either balanced Robertsonian translocations, balanced reciprocal translocations, balanced inversions, or extra markers. These translocations could conceivably be transmitted to offspring if ICSI allowed them to conceive. However, because of the limitations of the resolution of cytogenetics, and the very small percentage of these readily discernable karyotypic abnormalities found in infertile men, until recently it had been a convoluted struggle to study the genetic causes of male infertility, and the possible transmission of these genetic errors to the offspring of couples with male infertility (10).

The possibility that many more cases of male infertility might be genetic was bolstered by the failure of most clinical therapies to correct deficient spermatogenesis (1-2,11-21). The heritability of sperm count demonstrated in the wild (22-24), classic studies of naturally occurring pure sterile Y deletions in *Drosophila*, and very early molecular investigations of the Y chromosome in humans led to what has now become an intense search for genes which control spermatogenesis and which may be defective in many or most infertile males (25-29). However, only recently has the frequent genetic etiology of male infertility related to defects in spermatogenesis (not to mention obstruction) become widely acknowledged via molecular methodology (1,30-39). If male infertility is of genetic origin, its possible transmission to offspring of successfully treated infertile men is a serious social concern (1,40-61).

#### Y CHROMOSOME MAPPING OF INFERTILE MEN AND ICSI

With simple karyotyping, it has been known that a very small number of azoospermic men (0.2%) have large defects visible in the long arm of the Y chromosome that are not present in their fertile fathers. This implied the existence of an azoospermic factor somewhere on Yq. (3). However, smaller defects (i.e. "microdeletions") could not be discerned with those limited early cytogenetic methods (Fig. 1a,1b,1c). Therefore, defects in Yq were considered to be rare even in azoospermic men.

In 1992, comprehensive Y chromosomal maps were constructed using yeast artificial chromosomes (YACS) and sequenced tagged sites (STS), and this created the possibility for more detailed study of the Y chromosome in infertile men (62-63). Using polymerase chain reaction (PCR), a more refined search for Y chromosome deletions could be pursued by testing for as many as 52 DNA landmarks (STSs, or sequence tagged sites) across the entirety of the Y chromosome. All Y-DNA markers employed were placed on a physical map of the chromosome, the markers representing all gene families that were then known in the non-recombining region of the Y chromosome (35,62-64). Using these molecular mapping techniques, which have much greater resolution than cytogenetics, a large series of severely infertile men with clearly identified phenotypes revealed deletions in 13% of azoospermic males (36) (Fig. 2). As many as 7% of severely oligospermic men also had these same "microdeletions" (65-66). The most commonly deleted region was located in the distal portion of interval 6, subsequently referred to as AZFc (Fig. 3a &3b) (65,34,36). The higher resolution of Y mapping over karyotyping thus showed

that more than just 0.2% of azoospermic men had defects of the Y chromosome, and more than just a few percent of severely infertile men had a genetic cause for their condition.

However, because of the highly polymorphic nature of the non-recombining region of the Y (NRY), there are many “Y deletions” that are of no consequence. Only if these deletions in the infertile male are not present in his fertile male relatives, nor in hundreds of normal controls, could they be implicated as a cause of the infertility. The fertile fathers of the Y-deleted, infertile men were shown to have intact Y chromosomes, demonstrating that the deletions had arisen *de novo* and providing strong evidence that these *de novo* deletions were indeed the cause of the spermatogenic failure observed in these men. Many laboratories throughout the world have reported on these sub-microscopic deletions of the Y chromosome in azoospermic and severely oligospermic men (27,30-35,60,67-93,). Nonetheless, even these popular, new molecular methodologies were crude (not sequence-based) maps, and were suspected of missing huge areas of DNA sequence.

The DAZ gene cluster was identified within the most commonly deleted region, AZFc (36,94). DAZ genes were shown in humans to be transcribed specifically in spermatogonia and early primary spermatocytes (95). Autosomal DAZ homologues were also found in *Drosophila* (the Boule gene), in mice (DAZLA), and in fact in frogs and even worms (Table 2). These autosomal DAZ gene homologues were found to be necessary for spermatogenesis in every species studied (28,96-97). In the human, Y chromosome DAZ, located in the AZFc region, was found to be in the midst of an area of multiple nucleotide sequence repeats. It was later found to be present in four near-identical copies (99.9%) in the AZFc region (98). The presence on human chromosome 3 of DAZLA, an autosomal homologue of the human Y chromosomal DAZ, is what allows a small degree of spermatogenesis to survive in the majority of AZFc-deleted men. However, men with larger deletions that extended beyond AZFc had no sperm at all (65). Recently it has been shown that smaller deletions, which take out only two copies of DAZ result in milder spermatogenic defects than the classic AZFc deletion which takes out all four copies of DAZ (99-100). This indicates that there is a polygenic dosage effect of multiple genes that might control spermatogenesis.

Early ICSI studies showed a clear trend toward larger deletions causing more severe spermatogenic defects than smaller deletions (65,101). These studies suggested that possibly several genes in different areas of the Y chromosome might play an important role in spermatogenesis. In fact, some of the earliest studies of deletion on the human Y chromosome unveiled a different gene (RBM) in the AZFb region (27,26,102,64,73). Although there are numerous copies and pseudogenes of RBM on the Y, most of which are nonfunctional, there appears to be a functional copy in the region just proximal to AZFc, with no “rescue” homologues elsewhere. These early results supported the concept, that numerous genes on the Y chromosome, in addition to those of the AZFc region, impinge on spermatogenesis (64). As might have been expected, many more genes have now been identified in AZFc and elsewhere on the Y by detailed sequencing studies (64,102-103). Thus, multiple spermatogenesis genes apparently contribute to and modify the severity of the spermatogenic defect in Y-deleted men.

These early deletions on the Y were called “micro” deletions only because they could not be discerned by karyotyping. But they were indeed huge deletions (102). It was correctly hypothesized that smaller deletions, or point mutations might very well be present both in AZFc

and elsewhere, but the repetitive nucleotide sequences which characterize much of the Y chromosome made it very difficult with standard STS markers to define smaller deletions (104).

The unusually repetitive sequence structure of the AZFc region of the Y plagued even the first attempts at constructing a physical map with YAC's, because repetitive STS's could not be accurately placed in what was then called deletion intervals 6D-6F. Even the size of AZFc (without an accurate sequence) was controversial (0.5 to 2 Mb) (62,105-106). Efforts to find point mutations along the Y chromosome, have also been thwarted by the presence of multiple copies of genes in these regions with numerous Y specific repeats that in the absence of a complete sequence made the detection of specific nucleotide errors almost impossible to detect. The Y chromosome, and specifically the most commonly deleted area, such as AZFc, defied sequencing by the usual methods. Therefore, the AZFa section of the Y was initially selected to study in detail, because of the apparent absence of multiple gene copies or Y-specific repeats in that region (104,107).

AZFa, has a completely different, more conventional and non-repetitive structure than AZFb or AZFc, making this much less commonly deleted region of the Y an ideal starting-off point. Therefore, the AZFa region of the Y chromosome was the first region of the Y to be sequenced, and two functional genes were identified, USP9Y and DBY (104,107). Sequencing of these two genes in 576 infertile men and 96 fertile men revealed several sequence variants most of which were inherited from the fertile father and of no functional consequence. However, in one case a de novo point mutation was found on USP9Y (a four base pair deletion in a splice-donor site, causing an exon to be skipped and protein truncation). This mutation was absent in fertile relatives and represented the first case of a point mutation causing a single gene defect associated with spermatogenic failure. This particular region of the Y was more amenable to such a mutation search because of the lack of sequence repeats which plague the rest of the Y chromosome. This finding offered a hint at what we might find if we were able to search for more subtle gene defects in the larger areas of the Y chromosome where most of the testis specific genes have been located, such as AZFb and AZFc (64,102).

Studying AZFa also provided a good model for the interaction and overlapping functions of multiple genes which sheds light on the "polygenic" nature of the genetic control of spermatogenesis. When the entire AZFa region is deleted, taking out both DBY and USP9Y, there is a more severe spermatogenic defect and the patient is azoospermic. However, when there is only a specific point mutation of the USP9Y gene, we observed maturation arrest with a few pachytene spermatocytes developing into mature sperm in a few seminiferous tubules. Thus, the loss of DBY (the only other gene in the AZFa region) exacerbates the spermatogenic consequences of the loss of USP9Y. This finding in the AZFa region runs parallel to previous observations that larger Y deletions (which take out more genes) are associated with a lesser likelihood of finding sufficient sperm for ICSI (65).

Shortly after we began our Y chromosomal mapping study of infertile men, intracytoplasmic sperm injection (ICSI) with testicular and epididymal sperm retrieval methods for azoospermia were developed (1,44-46,48-49,51,54,60,108). Men with the most severe spermatogenic defects causing azoospermia in the ejaculate could now have children. Thus, at the very moment in time that we had an effective treatment for severe male infertility, the reality that male infertility is often of genetic origin, also became generally recognized. Subsequently it was

demonstrated that these Y deletions would be transmitted to offspring as a result of ICSI (54-55,59,65). When sperm were recoverable in azoospermic or oligospermic men, there was no significant difference in fertilization or pregnancy rate with ICSI whether the man was Y-deleted or not (Table 1B). Large defects resulted in complete azoospermia but smaller defects were associated with the recovery of some sperm sufficient for ICSI, and even occasionally spontaneous offspring as well (109).

## WHY THE “Y”?

Why should the initial molecular efforts at defining the genetic causes of male infertility have concentrated on this difficult Y chromosome with all of its confounding repeats, polymorphisms, and degenerating regions? The answer lies in the evolutionary history of the X and Y chromosome. Over the course of the last 240-320 million years of mammalian evolution, the X and the Y chromosome have evolved from what was originally a pair of ordinary autosomes (Fig. 4) (64,103,110-115). During that evolution, just as most of the ancestral X genes were decaying because of the lack of meiotic recombination of the developing X and Y-chromosomes, genes which control spermatogenesis arrived (by transposition or retroposition) from autosomes to the Y (Fig. 5). Once on the Y, these formerly autosomal genes amplified into multiple copies, and achieved “greater prominence” (94,103). Spermatogenesis genes that arrived on the Y, but came originally from autosomes, include the well studied DAZ and CDY genes (94,98,116). Other spermatogenesis genes on the Y have persisted from their original position on the X and later became modified, and developed specific spermatogenic function on the Y. These genes also were amplified into numerous copies on the Y, such as the RBM genes (117-121).

Although DAZ is a very ancient, well-conserved gene, readily found to be functional in autosomes of *c. elegans* (worms), *Drosophila* (fruit flies), *Xenopus* (frogs), and rodents, it is only found on the Y chromosome of old world monkeys, apes, and humans (Table 2). In earlier mammals and in non-mammalian species, DAZ homologues are otherwise purely autosomal. RBM genes, however, are found on the mammalian Y as far back as the Y’s origin, as evidenced by its presence on the Y of marsupials even before the divergence of eutherian from non-eutherian mammals. Thus, RBM had its origin on the ancestral autosomes that evolved into the mammalian X and Y-chromosomes. The ancestral RBM that remained on the X chromosome (RBMX) retained its “widespread” function, whereas RBM-Y, which persisted on the receding Y chromosome, evolved a male-specific function in spermatogenesis amplified from 9 exons to 12 exons, and into numerous copies, most of which are nonfunctional. But at least one of them, RBMY-1 in the AZFb region, retained its testis-specific function (119,121-123).

Indeed, even the SRY gene (the male sex-determining locus) is considered to originate from the SOX3 gene on the ancestral X prior to differentiating into the SRY male sex-determining gene. In fact, the evolution of a non-recombining male determining gene (SRY) is what actually began the whole process of the Y chromosome’s evolution. SOX-3 is a gene on the X chromosome which inhibits SOX-9 also on the X chromosome. SOX-9 (on the X chromosome) is the gene that actually activates male sex determination. SOX-3 evolved into SRY on the ancestral Y chromosome. SRY inhibits SOX-3 from suppressing SOX-9, and thus determines whether the SOX-9 cascade of events leading to the formation of a testis takes place. That was the beginning of the transformation of an ordinary pair of autosomes into the modern X and Y. (Fig. 6) (113-114,116,122,124).

Genes associated with the non-recombining SRY region that were specifically beneficial for male function or antagonistic to female function, flourished on the evolving Y chromosome because it was a “safe harbor,” without the detrimental effect of meiotic recombination which would have otherwise allowed male-specific genes to be expressed in females (64,103,116,125). In this way, “male benefit” genes have arrived and accumulated on the evolving Y chromosome over many millions of years via the three mechanisms of: “transposition” from an autosome via

translocation, “retroposition” from an autosome via reverse transcription, and “persistence,” i.e., male modification of function from what was originally a gene on the ancestral X. This process gives the Y chromosome a very unique type of “functional coherence” not seen elsewhere in the human genome (Fig. 7) (64). However, like with SRY, we should not be surprised to find that many genes which are male-specific could be on the X as well, and sprinkled throughout the genome.

#### FUNCTIONAL REPRODUCTIVE ANATOMY OF THE X AND Y CHROMOSOME

Translocations occur on a relatively frequent basis in any species. Over evolutionary time, this results in conserved, homologous genes of different species residing in completely different parts of the genome and in a relatively mixed-up array of genes in every chromosome, where structural proximity has little or no relationship to function (64). However, these random transpositions (which over the course of time result in a chaotic lack of apparent organization of the genome) have also allowed direct acquisition by the Y of genes that have a common function to enhance male fertility. Selective pressures favor the process of spermatogenesis genes concentrating on the non-recombining portion of the Y chromosome in association with the male sex-determining gene, SRY, particularly if these genes are of little benefit to females or actually diminish “female fitness” (94,110-113,125-127,129).

Quite interestingly, the X chromosome, unlike autosomes, and unlike the Y chromosome, has been remarkably conserved in all mammals, with little mixing of genes from elsewhere. This is because of the selection against disruption of development of the X-inactivation process in the evolution of the X and Y (128). In a later section, I will explain more lucidly the phenomenon of X-inactivation. Suffice it to say at this junction, unlike the autosomes, the X chromosomes of all mammals are remarkably similar, and the Y chromosome has evolved into a specific functional organization not seen elsewhere in the genome.

Genes which arrived on the Y, or which persisted on the degenerating Y from the ancestral X, and gained prominence on the Y, underwent paradoxical processes of amplification, producing multiple copies, and degeneration because of the failure of recombination. DAZ (as has been discussed) was the first such gene which was identified in the AZFc region of the Y chromosome by our initial Y mapping in azoospermic men (36). DAZ represents the first unambiguous example of autosome-to-Y transposition of a spermatogenesis gene, which is representative of a generalized process that affects many other spermatogenesis genes, and indeed possibly explains the relatively poor state of affairs of human spermatogenesis compared to that of other animals (94,125). Autosome-to-Y transposition of male fertility genes appears to be a recurrent theme in Y chromosome evolution throughout all species. The autosomal DAZ gene (in humans called DAZ-L) is located on human chromosome 3, and on mouse chromosome 17. At some point during the evolution from new world to old world monkey, about 30 million years ago, this DAZ gene arrived on the Y by transposition from what is now human chromosome 3, and there multiplied to produce four almost identical gene copies. This process was first depicted for DAZL and DAZ. However, there are now known to be other previously autosomal genes or gene families on the Y that are expressed specifically in the testis, and are also likely to play a major role in spermatogenesis (Table 3) (64).

The CDY gene arrived on the AZFc region of the Y chromosome in a different fashion than DAZ, via reverse transcription (103). The autosomal CDY gene (CDY-L) is located on mouse chromosome 13 and on human chromosome 6. CDY's intron-free homologue found its way to the human Y actually prior to the arrival of DAZ, sometime after the prosimian line of primates separated off, approximately 50 million years ago (Fig. 8). It did so by reverse transcription and, therefore, has very few introns in marked contrast to CDYL, its autosomal homologue on chromosome 6, which is intron-rich (103). The RBMY-1 gene, located on the "AZFb" region of the Y chromosome, had its origin in our ancestral X chromosome, "persisted" on the Y, and there it was modified into a testis-specific gene (116,118-121,113,96). As the evolving Y chromosome underwent decay because of lack of recombination, these "persistent" genes (which were originally X chromosomal) diverged in sequence on the Y, and those which had "male benefit" functions flourished (Table 4).

The AZFa region of the Y chromosome is a little more complicated. As the ancestral Y began to recede in comparison to its paired X, it did so in stages and "strata" over about 320 million years (Fig. 9). There are four clearly definable strata on the X chromosome that decrease in X-Y homology according to how early in their history they failed to recombine (103). As a given stratum of the X failed to recombine with its Y counterpart, homologous X-Y genes in that stratum diverged in sequence structure (Fig. 6). The most recent areas of non-recombination of X genes is located most proximally on the X and the most ancient areas of non-recombination are located most distally on the X. The AZFa region of the Y chromosome diverged from the X fairly recently in its evolutionary history and, therefore, has a much more conventional sequence structure, with much greater homology to its counterpart on the X. The two genes in AZFa (USP9Y and DBY) both play an important role in spermatogenesis, in that deletion of AZFa results in a complete absence of sperm. Yet they have very close homologues on the X, and are still ubiquitously transcribed (104,107).

Regardless of the method of arrival of spermatogenesis genes to the non-recombining portion of the Y, this region would inevitably face, and likely succumb, to powerful degenerative forces during subsequent evolution (94). Saxena postulated that, "perhaps the rate of acquisition of male fertility genes approximates the rate of subsequent degeneration, resulting in an evolutionary steady state. In contrast to the extreme evolutionary stability of the X chromosome, at least in mammals, individual male infertility genes might not be long lived, in an evolutionary sense, on the Y chromosome."

Our emphasis on the Y chromosome for locating spermatogenesis genes to help in elucidating the causes of male infertility makes sense, because the Y has collected for us genes that otherwise would be hidden throughout the genome. However, it would be naïve to assume, in view of the evolutionary history of the X and the Y, that there are not equally powerful components for regulating spermatogenesis located also on the X chromosome and on the autosomes. Some have speculated that the instability of the Y chromosome may lead to an inexorable decline in sperm production in the evolution of any species, unless there is either sperm competition within the mating pattern of the species, or a method of continual recruitment of new spermatogenesis genes to the Y chromosome with subsequent amplification prior to ultimate degeneration (125). The Y chromosome is a favorable place to begin a molecular search

for genes that affect male fertility. But the very reason for starting with the Y emphasizes the likelihood of finding more such genes hiding throughout the genome.

#### PARALLEL AND INDEPENDENT EVOLUTION OF X AND Y CHROMOSOMES IN HUMANS AND ANIMAL MODELS: THE ORIGIN OF X-INACTIVATION (e.g., worms, flies, even fish)

Sex chromosomes have evolved independently many times in different genera with the same common theme. The chromosome with the sex-determining gene progressively loses the ability to recombine with its mate, accumulates mutations, and embarks on an inexorable deterioration. For example, the mammalian Y chromosome and the *Drosophila* Y chromosome (not to mention the ZW system in avians) have nothing in common with each other except their name, and the fact that they do not recombine with their larger counterpart, which is called the X chromosome. The X and Y-chromosomes evolved completely separately and differently in each of these well studied groups of species, but remarkably they evolved via the same common evolutionary theme.

If the Y chromosome of *Drosophila* has a deletion, the *Drosophila* is sterile. If the Y chromosome of the mouse or human has a deletion, the mouse or human is sterile. In any species thus far studied, if the Y chromosome has a significant deletion, that species is sterile. However, the genes that would have been deleted on the *Drosophila* Y, or the mouse Y-chromosomes, are not the same genes that are deleted in the human Y. For example, the homologue of the human Y DAZ gene on *Drosophila* is autosomal, (the so-called “boule” gene), just as it is also autosomal in the mouse (DAZLA), and the deletion of this autosomal gene in *Drosophila*, or in the mouse, results in sterility just as readily as deletion of the *Drosophila* Y or the mouse Y chromosome (96,28,97). Deletion of the DAZ genes on the Y chromosome of humans often does not result in complete absence of spermatogenesis, possibly because the ancient DAZ autosomal homologue on chromosome 3, rescues spermatogenesis to some small extent. Deletion of certain AZFb genes, however, usually result in total absence of sperm, probably because there are no effective autosomal or X homologues to rescue spermatogenesis when these genes are deleted.

The same pattern is found in all species studied. The X and Y begin as a pair of ancestral autosomes in which a male-determining gene (which does not recombine with its homologue) begins the inexorable process of decay into what then becomes a Y chromosome. In some *Drosophila*, the Y chromosome has disappeared altogether, and the resultant XO male is sterile. Although the human Y chromosome (or for that matter, any of the mammalian Y chromosomes) has no nucleotide sequence similarity at all to the fruit fly’s Y chromosome, the same mechanism of accumulation of spermatogenesis genes to a decaying male sex-determining chromosome is operating (125). Thus, the Y chromosome of the *Drosophila*, (and to some extent even the mouse) is quite different than the Y chromosome of the human, but yet they appear to be the same because of the common two evolutionary themes in the development of the Y. One theme is its gradual decay from what was its autosomal homologue, but is now the X chromosome, and the second theme is its growth from acquisition and accumulation of male benefit specific genes from other parts of the genome.

This evolutionary mechanism of degeneration of the Y, and accumulation of spermatogenesis genes may explain the relatively high frequency of male infertility and poor

sperm quality in species (like ours) that have minimal sperm competition. It may also explain the phenomenon of X inactivation, the high frequency of XO human stillbirths, and the survival of some XO concepti as Turner's Syndrome children.

The ancestral autosome which is to become the X chromosome develops a process first of hyperactivation, and then X inactivation, to make up for the decay of homologous alleles on what is now becoming the Y chromosome (129,128). As the X retained, and the Y gradually lost, most of these ancestral genes, expression of the X had to, at first, be increased to compensate for the male's loss of these genes, and X inactivation had to develop in the female for X genes whose Y homologue had eventually disappeared (Fig 10). The problem of X chromosome dosage differences in males and females is solved by inactivation in the female of one of the two X chromosomes combined with up regulation of the remaining X chromosome in females and the single X chromosome of males. This mechanism also insured the remarkable conservation and similarity of the X chromosome in all mammalian species.

An understanding of the evolution of X-homologous Y genes losing their general cellular functions, requiring up regulation, and inactivation of X genes on one of the two female X chromosomes, helps to clarify the different stages of evolutionary development of the mouse and human Y. The RBMY gene is a testis-specific male benefit spermatogenesis candidate gene. RBM's homologue on the X (RBMX) developed no male specific expression, but retained its general cellular housekeeping function. Thus, RBMX would be expected to behave like an X gene with no Y counterpart and probably undergo X inactivation (Table 5). As a related example, human ZFX and ZFY genes are very closely related homologues on the X and Y chromosome, both of which have general cellular housekeeping functions that are critical for life. Therefore, ZFX escapes X-inactivation in the female and ZFY is, therefore, probably one of the Turner genes (64,129). However, the mouse is quite different. In the mouse, ZFY appears to have evolved a male-specific function, and, therefore, ZFX in the mouse has a general housekeeping function not shared with its Y homologue. Thus, ZFX in the mouse is X-inactivated, even though in the human it is not.

Similarly, RPS4X and RPS4Y are another homologous pair of genes on the X and Y, both of which have equivalent housekeeping functions in the human. Therefore, in the human RPS4X, similarly to ZFX, is not subject to X-inactivation because there are functional transcripts in men, from the X and Y, and in women from the two X's. In mice, however, RPS4Y has not only lost its function in evolution, but has degenerated out of existence. Therefore, in the mouse RPS4X is subject to X-inactivation, just as most of the genes on the X chromosome in all animals require X-inactivation if they don't have a functioning homologue on the Y.

This summary of the evolutionary history of our X and Y chromosome explains why the Y chromosome was a good place to start in our molecular search for spermatogenesis genes. However, it is clear that numerous genes from throughout the genome, though less well studied, also impinge on spermatogenesis, and may thus be transmitted to ICSI offspring.

#### KARYOTYPE OF INFERTILE MALES AND OF ICSI OFFSPRING

The incidence of cytogenetically recognizable chromosomal abnormalities in the offspring of ICSI patients is acceptably very low, but much greater than what would be anticipated in a normal newborn population. Follow-up of the first 1,987 children born as a result of ICSI has

been meticulously studied and reported by the originators of ICSI in the Dutch-Speaking Free University of Brussels (Bonduelle et al., 1995, 1996, 1998a, 1998b, 1999). In 1,082 karyotypes of ICSI pregnancies, 9 (0.83%) had sex chromosomal abnormalities, including 45,X (Turners), 47, XXY (Klinefelter's), 47, XXX and mosaics of 47, XXX, as well as 47, XYY (Table 6). This is a very low frequency of sex chromosomal abnormalities, but nonetheless is four times greater than the expected frequency of sex chromosomal abnormalities in a newborn population (0.19%). Obviously the 45,X and 47,XXY children will be infertile (0.5%). Four (0.36%) of the 1,082 offspring had de novo balanced autosomal translocations or inversions. These children were apparently normal, but this incidence of de novo balanced autosomal translocations is five times greater than what would be anticipated in a normal newborn population (0.07%), and these children might also be suspected of growing up to be infertile (0.36%).

There were ten cases of translocations inherited from the infertile male (.92%), and these children are also likely to be infertile. Nine of these ten were balanced translocations in normal newborns. The one (0.09%) unbalanced translocation, was diagnosed at amniocentesis and was terminated. Since approximately 2% of oligospermic infertile males have chromosomal translocations (compared to a controlled population of 0.25%), it is not surprising that 0.9% of ICSI offspring would inherit such a translocation from their father (Van Assche et al., 1996). Thus, on purely conventional cytogenetic evidence, approximately 2% of ICSI offspring might be expected to share their father's infertility.

The remarkable five-fold increase in de novo balanced translocations among ICSI offspring (0.36% compared to 0.07%) is of great concern. Only 20% of balanced translocations are de novo, and 80% are inherited (130). De novo balanced translocations are usually of paternal origin (84.4%) and obviously most of the inherited balanced translocations in ICSI patients would come from the father (10,131). Balanced translocations which are associated with male infertility thus originally arose de novo in the testis of an otherwise fertile father, or his paternal ancestors, in 0.07% of a control population. Much more frequently, de novo balanced translocations (albeit still a low percentage of only 0.36%) arise in the testis of infertile men undergoing ICSI and are transmitted to their offspring. The deficient testis appears not only to be at risk of transmitting inherited autosomal cytogenetic defects, but also of producing a greater number of de novo cytogenetic defects.

The incidence of congenital abnormality in ICSI children (2.3%) is no greater than in every normal population studied (5-9). Even the few reported ICSI offspring of Klinefelter's patients have been chromosomally normal (132-135). There is no greater incidence of autosomal aneuploidy than what is predictable from maternal age. Sex chromosome aneuploidy (0.83%) in ICSI offspring is not an unacceptably high incidence, although it is clearly greater than normal (0.19%). Thus, the evidence based on cytogenetic and pediatric follow-up of ICSI offspring is very reassuring, despite the probable occurrence of infertility and sex chromosomal disorders in a small percentage of cases.

#### Y DELETION STUDIES OF ICSI OFFSPRING

Microdeletions on the long arm of the Y chromosome do not appear to adversely affect the fertilization or pregnancy results either in severely oligospermic men, or in azoospermic men from whom sperm were successfully retrieved (65). There have been concerns registered that the

ICSI results might be poorer with Y-deleted men, but in larger series, that has not been the experience (90,136) (Table 1B).

Thus far, all of our male offspring from Y-deleted men have had the same Y deletion as their infertile father (59). Fathers, brothers, and paternal uncles of the infertile men, were also examined for Y deletions and fertility. Y deletions in our infertile males were for the most part de novo. That is, the fertile fathers of infertile Y-deleted patients had no Y deletion. However, all male offspring from ICSI procedures involving these Y-deleted men had their father's Y deletion transmitted to them without amplification or change (Fig. 11).

The idea that the Y deletion would be transmitted to the son is not as obvious as it might at first seem. If a few foci of spermatogenesis in the testis of a severely oligospermic or azoospermic Y-deleted man were present because of testicular mosaicism, it would seem very possible that the few areas of normal spermatogenesis within such a deficient testis of a Y-deleted man might actually have a normal Y chromosome. In that event, one could have expected the sons of these patients undergoing ICSI not to be Y-deleted. For example, thus far all the sons of Klinefelter's patients have been normal 46, XY (132-135). Thus, it is not at all obvious, intuitively, that this Y deletion had to be transmitted to the son. However, increasing experience seems to indicate that the Y deletion of the sterile father is, in fact, transmitted to the son, and we no longer have to just speculate about it.

It remains to be determined whether non Y-deleted fertile or infertile men have mosaic deletions in their testis. If so, then de novo Y deletions would also be found more frequently in the brothers of our Y-deleted patients, or in ICSI offspring of infertile men (even those who have no Y deletion) than would otherwise be expected to occur in a normal newborn population (30). However, what we now know from the detailed sequence studies of the AZFa and AZFc regions of the Y chromosome gives us a much better picture of how Y deletions commonly occur, and how they are transmitted to offspring.

#### SEQUENCING OF THE Y CHROMOSOME, MECHANISM OF DE NOVO APPEARANCE OF Y DELETION, AND TRANSMISSION OF MALE INFERTILITY TO FUTURE GENERATIONS

The first region of the Y chromosome that was completely sequenced was AZFa because it was a region of the Y with very little repetitive sequences, and was relatively amenable to study (104). Now, the more daunting AZFc region (with large areas of sequence identity) has also been very recently sequenced (102). The sequence of AZFa, revealed it to span approximately 800,000 nucleotide bases (800 KB), and was bounded on each side by a proximal breakpoint area and a distal breakpoint of around 10,000 bases (10 KB) of 94% sequence identity with each other. Furthermore, the sites of these breakpoints (even with conventional mapping) in most infertile men with AZFa deletions were indistinguishable from each other. Within these 10 KB breakpoint regions, the site of AZFa deletion almost uniformly fell within smaller domains (447 BP to 1285 BP) of these 10,000KB breakpoints that exhibited absolute sequence identity (107). Indeed, the sequencing of deletion junctions of most AZFa-deleted patients revealed that homologous ("illegitimate") recombination had occurred between identical areas of proviruses that bounded each side of this 800,000 nucleotide region, allowing the entire intervening segment to drop out. The repeat areas of absolute sequence identity proximal and

distal to a common area of deletion clarifies the mechanisms for Y deletions to occur so frequently. With AZFa, the sequence repeats are caused by an ancient intrusion of a retrovirus into that region of the human Y. For AZFc, the situation is similar but occurs for a different reason on a vast scale of unprecedented and much more massive lengths of repeats.

The sequence of AZFc reveals the same mechanism for deletions to occur as for AZFa, but on a grander scale. Examination of the AZFc sequence revealed symmetries of unprecedented scale and precision. Figure 12 is a compressed dot-plot of the AZFc sequence in which perfect matches of at least 500 nucleotide bases are summarized by the same color (See Figure 12). There are no single-copy sequences in the 4.5mB region analyzed. There are six distinct families of amplicons (massive repeat units) ranging from 14kb to 678kb in length, spanning the entirety of AZFc, as well as another million base pairs proximal to AZFc. There are six massive inverted repeats and three massive direct repeats. Large domains of absolute sequence identity become easy sites for dropout of large chunks of DNA, since the boundaries of absolute sequence identity can “illegitimately” recombine with each other (106,102). Amplification and inversions in the most ancient areas of divergence from the X, create a perfect environment for subsequent deletion and degeneration. The very repetitive nature of the Y chromosome, that made sequencing and finding small deletions or point mutations so difficult, is also the cause of its instability over an evolutionary time frame, as well as in our current infertile male patient population. Y deletions large enough to be detected with our currently outmoded maps occur in about 1/2000 births because of these vast areas of absolute sequence identity. However, an analysis of the complete sequence of AZFc indicates that smaller deletions, involving only limited areas of AZFc, have been completely missed until now by conventional STS mapping.

The AZFc region of the Y (which is the most common “microdeletion” site, spans 3.5 megabases of DNA, and is thus hardly a “microdeletion” (as it is often called). It is composed of three giant palindromes constructed from six families of amplicons (i.e., long areas of absolute sequence identity). This “microdeletion” site, AZFc, contains 19 transcriptional units composed of seven different gene families, only one of which is DAZ (which comes in four separate copies). This huge 3.5 mB AZFc region is bounded on each side by nucleotide sequences that are 229,000 long of near absolute sequence identity (99.9%). But within AZFc are multiple sites for smaller deletions that could not possibly be detected by current methods because the PCR would amplify from one area of AZFc even if it did not amplify from a missing area with the same sequence. Unlike AZFa, the “breakpoints” of sequence identity for AZFc did not come from an ancient retrovirus, but rather from the very nature of the evolution of the Y chromosome caused by the failure of recombination.

In retrospect, it is apparent why all previous mapping and sequencing efforts relying on techniques that include STS content analysis, restriction mapping, Southern blotting, and fluorescent in-situ hybridization, failed to decipher AZFc’s organization. These approaches simply could not distinguish amplicons that display the size and sequence similarity found in AZFc. The extraordinary structure of the AZFc complex, and presumably other testis-specific regions of the Y, could only be unraveled by accurate genomic sequencing of clones drawn from a single Y chromosome, and an analysis of sequence family variants (SFV’s) identified through such sequencing. There are many amplicon pairs (and inverted repeats) in AZFc in addition to B2/B4. There are similar repeats elsewhere on the Y outside of AZFc. This “huge” region of

what used to be called a Y “microdeletion” spans transcriptional units that appear to affect only one cell lineage, spermatogenesis. The Y chromosome is a preferential site for “gene building” of testis-specific transcriptional units. Thus, autosomal DAZ has 11 exons, whereas each one of the four copies of DAZ on the Y has 28 exons and (as well as 19 pseudoexons). It is, therefore, safe to anticipate finding a much greater number of cases of male infertility to derive from Y chromosomal aberrations. There are multiple areas on the Y that, like the AZFc region, have either direct or inverted sequence repeats. Direct repeat sequences will result in common deletions due to homologous recombination. Inverted repeats will result in “isodicentric” translocations also because of homologous recombination. Thus, we can expect to find many other, smaller deletions on the Y of infertile men that have previously escaped detection by the crude, non-sequence based STS mapping currently available.

The proximal and distal breakpoint regions of AZFc deletions correspond to just two members (B2 and B4) of one of the six-amplicon families. There are seven different families of genes with 19 separate transcriptional units within AZFc (3.5mB), and eleven families of genes with 27 separate transcriptional units within the palindromic complex that spans AZFc (4.5mB). The seven gene families within AZFc are BPY<sub>x</sub>, DAZ, CDY-1, CSPGL4Y, GOLGA2LY, TTY-3 and TTY-4. The four additional gene families within the palindromic complex that are located proximal to AZFc (RBM1-1, PRY, TTY5 and TTY6) are located in the distal most region of what used to be called AZFb. All these genes are specifically transcribed in the testis. The “designations” of AZFb and AZFc no longer seem tenable, because the basic construction of the palindromic complex containing these repeat units and genes extends for almost one million nucleotides proximal to AZFc.

Therefore, it is likely that smaller deletions, taking out less genes, or point mutations, involving just one or two copies of identical genes that normally occur in multiple copies, could account for many more cases of male infertility, or perhaps more moderate degrees of spermatogenic failure (e.g.  $> 2 \times 10^6$  to  $20 \times 10^6$  sperm/cc). The large “micro-deletions” thus far reported in the literature are for the most part de novo, but certainly some men with these large deletions, despite severe oligospermia, can naturally father children (about 4%). Men with more moderate degrees of oligospermia may father children even more easily, and thus smaller Y deletions causing more moderate degrees of male infertility may be less likely to be of de novo origin. In any event, as more and more genetic causes of spermatogenic failure (severe or mild) come to light, there is an increased awareness of the likely transmission of male infertility to future generations.

## THE X CHROMOSOME AND MALE INFERTILITY

It has been theorized that the Y is not the only sex chromosome that accumulates genes which benefit spermatogenesis over an evolutionary time span (137,110,138,139). As the X chromosome (240 to 320 million years ago) differentiated from the Y, the sexually antagonistic gene theory favors the emergence of genes on the X also that benefit the heterogametic sex (with mammals of course, that is the XY male) and that are detrimental to the homogametic sex (the XX female) if these genes are recessive. For example, a rare recessive evolutionary mutation on the X that favors spermatogenesis would be preferentially passed on to male offspring who by virtue of a higher sperm count would then continue to pass down this favorable X mutation in

turn to his offspring. Such a recessive mutation (favorable to spermatogenesis) in an autosome would be lost to future generations. Thus, we can also anticipate an accumulation on the X chromosome (as well as on the Y) of male benefit recessive genes.

In fact, RT-PCR subtraction studies of spermatogonia in mice have demonstrated that a large fraction of genes which are expressed exclusively in pre-meiotic male germ cells, are indeed X chromosomal in origin (140). Eleven of the 36 genes that were expressed specifically in mouse spermatogonia were found exclusively on the X chromosome. Since the X chromosome is so well conserved in all mammals (as explained earlier by the universal development of X inactivation in mammalian evolution), it seems very likely that evolution has also conferred on the human X chromosome a large portion of the burden for spermatogenesis. Thus, a search for detrimental mutations on the human X in infertile males is also likely to be very rewarding. Thus, the failure to identify a Y deletion gives no assurance whatsoever that a genetic cause for infertility won't be transmitted to the ICSI offspring either via the Y, the X, or even autosomes.

## CONCLUSIONS

The presence of Y deletions does not decrease the fertilization or pregnancy rate for azoospermic and severely oligospermic ( $<2 \times 10^6$ ) men. Thus far the sex ratio of delivered children is apparently equal and the children are karyotypically normal. However, the Y deletion (and presumably infertility) is transmitted to the male offspring (59). Although using standard STS mapping, Y deletions occur in only 10% of azoospermic and severely oligospermic men, sequenced based mapping (now just available) is certain to increase that percentage significantly.

There are most likely many spermatogenesis genes involved in male infertility, and we have barely scratched the surface with what have been, up till now, very crude mapping techniques on the Y chromosome. Whether or not these gross "microdeletions" currently reported in the literature are found in an infertile male patient, does not obviate the likelihood of there being a genetic cause for his azoospermia or severe oligospermia. If a defective gene (or genes) is located on his Y chromosome, then his male offspring will most likely inherit his problem. However, there are also many genes on the X-chromosome, and throughout the genome, that impinge upon spermatogenesis that are not thus far identified by our currently crude mapping procedures. The recognized failure of any conventional therapy to improve spermatogenesis infers a genetic origin for most spermatogenic defects (141,142,136). These numerous genes may also be responsible for many cases of male infertility. Therefore, sons, and even daughters, may inherit the defect or be carriers.

It is clear that a negative Y microdeletion assay by currently popular methods does not rule out genetic abnormality. Therefore, in our view, genetic counseling should be provided to all infertile males, whether or not an abnormality is detected and whether or not Y deletion assays have even bothered to be performed. Although karyotyping certainly should be routinely performed for infertility patients (because of the risk of miscarriage and abnormal offspring resulting from either sex chromosome abnormalities, or unbalanced translocations), Y deletion testing may not be mandatory yet, because it is still very crude, and negative results should not be at all reassuring. Furthermore, some "deletions" may only be polymorphisms, and not of clinical significance. It is apparent that there is likely to be frequent transmission of male

infertility from the ICSI father to his male (or even female) offspring regardless of current testing. Every couple must decide for themselves whether they wish to consider this risk. In our experience, most such couples, even when well informed, choose to have ICSI despite this risk. Thus, continued long-term clinical and molecular study of ICSI offspring is mandatory.

**POST-COURSE QUESTIONS**

1. Y deletions (some not detectable with currently popular assays) are associated with:
  - a. Varicocele.
  - b. Moderate oligospermia.
  - c. Severe oligospermia.
  - d. Azoospermia.
  - e. B, C, and D.
  
2. Y deletions result from:
  - a. Varicocele.
  - b. Excessive heat.
  - c. The desire to make more money.
  - d. Illegitimate homologous recombination between large areas of absolute DNA sequence identity.
  - e. Gene mutations.

Answers:

1. E
2. D

## REFERENCES

1. Silber, S.J., Nagy, Z., Liu, J., Tournaye, H., Lissens, W., Ferec, C., et al. (1995b) The use of epididymal and testicular spermatozoa for intracytoplasmic sperm injection: the genetic implications for male infertility. *Hum Reprod*, 10, 2031-2043.
2. Silber, S.J. (1989) The relationship of abnormal semen parameters to male fertility. Opinion. *Hum Reprod*, 4, 947-953.
3. Tiepolo, L. and Zuffardi, O. (1976) Localization of factors controlling spermatogenesis in the nonfluorescent portion of the human Y chromosome long arm. *Hum Genet*, 34, 119-124.
4. Van Assche, E.V., Bonduelle, M., Tournaye, H., Joris, H., Verheyen, A., Devroey, P., et al. (1996) Cytogenetics of infertile men. *Hum Reprod*, 11, 1-26.
5. Bonduelle, M., Legein, J., Derde, M.P., Buysse, A., Schietecatte, J., Wisanto, A., et al. (1995) Comparative follow-up study of 130 children born after ICSI and 130 children after IVF. *Human Reprod*, 10, 3327-3331.
6. Bonduelle, M., Wilikens, J., Buysse, A., Van Assche, E., Wisanto, A., Devroey, P., et al. (1996) Prospective study of 877 children born after intracytoplasmic sperm injection with ejaculated, epididymal, and testicular spermatozoa, and after replaced of cryopreserved embryos obtained after ICSI. *Hum Reprod*, 11, 131-159.
7. Bonduelle, M., Aytöz, A., Wilikens, A., Buysse, A., Van Assche, E., Devroey, P., et al. (1998a) Prospective follow-up study of 1,987 children born after intracytoplasmic sperm injection (ICSI). In: *Filicori M, Flamigni C, eds. Treatment of Infertility: The New Frontiers. Princeton: Communications Media for Education*, 445-461.
8. Bonduelle, M., Aytöz, A., Van Assche, E., Devroey, P., Liebaers, I., Van Steirteghem, A. (1998b) Incidence of chromosomal aberrations in children born after assisted reproduction through intracytoplasmic sperm injection. *Hum Reprod*, 13, 781-782.
9. Bonduelle, M., Camus, M., De Vos, A., Staessen, C., Tournaye, H., Van Assche, E., et al. (1999) Seven years of intracytoplasmic sperm injection and follow-up of 1,987 subsequent children. *Hum Reprod*, 14, 243-264.
10. Egozcue, S., Blanco, J., Vendrell, J.M., Garcia, F., Veiga, A., Aran, B., et al. (2000) Human male infertility: chromosome anomalies, meiotic disorders, abnormal spermatozoa and recurrent abortion. *Hum Reprod Update*, 6, 93-105.
11. Devroey, P., Vandervorst, M., Nagy, P., Van Steirteghem, A. (1998) Do we treat the male or his gamete? *Hum Reprod*, 13, 178-185.
12. Baker, H.W.G., Burger, H.G., de Kretser, D.M., Lording, D.W., McGowan P., Rennie, G.C. (1981) Factors affecting the variability of semen analysis results in infertile men. *Intl J Androl* 4, 609-622.
13. Baker, H.W.G., Straffon, W.G.E., McGowan, M.P., Burger, H.G., de Kretser, D.M., Hudson, B. (1984) A controlled trial of the use of erythromycin for men with asthenospermia. *Intl J Androl* 7, 383-388.
14. Baker, H.W.G., Burger, H.G., de Kretser, D.M., Hudson, B., Rennie, G.C., Straffon, W.G.E. (1985) Testicular vein ligation and fertility in men with varicoceles. *British Med J*, 291, 1678-80.

15. Baker, H.W.G. and Kovacs, G.T. (1985) Spontaneous improvement in semen quality: regression towards the mean. *Intl J Androl* 8, 421-426.
16. Baker, H.W.G. (1986) Requirements for controlled therapeutic trials in male infertility. *Clin Reprod Fertil*, 4, 13-25.
17. Nieschlag, E., Hertle, L., Fishedick, A., Behre, H.M. (1995) Treatment of varicocele: counselling as effective as occlusion of the vena spermatica. *Hum Reprod*, 10, 347-353.
18. Nieschlag, E., Hertle, L., Fishedick, A., Abshagen, K., Behre, H.M. (1998) Update on treatment of varicocele: counselling as effective as occlusion of the vena spermatica, *Hum Reprod*, 13, 2147-2150.
19. Nilsson, S., Edvinsson, A., Nilsson, B. (1979) Improvement of semen and pregnancy rate after ligation and division of the internal spermatic vein: Fact or fiction? *British J Urol*, 51, 591-596.
20. Rodriguez-Rigau, L.J., Smith, K.D., Steinberger, E. (1978) Relationship of varicocele to sperm output and fertility of male partners in infertile couples. *J Urol*, 120, 691-694.
21. Schoysman, R.G. (1983) Twelve-year follow-up study of pregnancy rates in 1291 couples with idiopathically impathically impaired male fertility. *Acta Europaea Fertilitatis*, 14, 51-56.
22. O'Brien, S.J., Wildt, D., Bush, M. (1986) The cheetah in genetic peril. *Sci Am*, 254, 84-92.
23. O'Brien, S.J., Wildt, D.E., Bush, M., Caro, T.M., Fitzgibbon, C., Aggundey, I., et al. (1987) East Africian cheetas: evidence for two population bottlenecks? *Proc Natl Acad Sci USA*, 84, 508-511.
24. Short, R.V. (1995) Human reproduction in an evolutionary context. *Ann NY Acad Sci*, 709, 416-425.
25. Johnson, M.D., Tho, S.P., Behzadian, A. and McDonough, P.G. (1989) Molecular scanning of Yq11 (interval 6) men with Sertoli-cell-only syndrome. *Am J Obstet Gynecol* 161, 1732-1737.
26. Ma, K., Sharkey, A., Kirsch, S., Vogt, P, Keil, R., Hargreave, T.B., McBeath, S., Chandley, A.C. (1992) Towards the molecular localisation of the AZF locus: mapping of microdeletions in azoospermic men within 14 subintervals of interval 6 of the human Y chromosome. *Hum Mol Genet* 1(1), 29-33.
27. Ma, K., Inglis, J.D., Sharkey, A., Bickmore, W.A., Hill, R.E., Prosser, E.J., et al. (1993) A Y chromosome gene family with RNA-binding protein homology: candidates for the azoospermia factor AZF controlling human spermatogenesis. *Cell*, 75, 1287-1295.
28. Eberhart, C.G., Maines, J.Z., Wasserman, S.A. (1996) Meiotic cell cycle requirement for a fly homologue of human Deleted in Azoospermia. *Nature*, 381, 783-5.
29. Hockstein, J.H. and Hochstenback, R. (1995) The elusive fertility genes of Drosophila: the ultimate haven for selfish genetic elements. *Trends Genet*, 11, 195-200.
30. Kent-First, M.G., Kol, S., Muallem, A., e al. (1996) The incidence and possible relevance of Y-linked microdeletions in babies born after intracytoplasmic sperm injection and their infertile fathers. *Mol Hum Reprod* 2, 943-950.

31. Kremer, J.A., Tuerlings, J.H., Meuleman, E.J., Schoute, F., Mariman, E., Smeets, D.F., et al. (1997) Microdeletions of the Y chromosome and intracytoplasmic sperm injection: from gene to clinic. *Hum Reprod*, 12, 687-691.
32. Kremer, J.A.M., Tuerlings, J.H.A.M., Borm, G., et al. (1998) Does intracytoplasmic sperm injection lead to a rise in the frequency of microdeletions in the AZFc region of the Y chromosome in future generations? *Hum Reprod* 13, 2808-2811.
33. Krausz, C. and McElreavey, K. (2001) Y chromosome microdeletions in 'fertile' males. *Hum Reprod* (letter) 16, 1306-1307.
34. Vogt, P., Edelmann, A., Kirsch, S., Henegariu, O., Hirschmann, P., Kiesewetter, F., et al. (1996) Human Y chromosome azoospermia factors (AZF) mapped to different subregions in Yq11. *Hum Mol Genet*, 5, 933-943.
35. Vogt, P.H., Affara, N., Davey, P., Hammer, M., Jobling, M.A., Lau, Y.F., et al. (1997) Report of the Third International Workshop on Y Chromosome Mapping 1997. *Cytogenetics & Cell Genetics*, 79, 1-20.
36. Reijo, R., Lee, T.Y., Salo, P., Alagappan, R., Brown, L.G., Rosenberg, M., Rozen, S., Jaffe, T., Straus, D., Hovatta, O., de la Chapelle, A., Silber, S. and Page, D.C. (1995) Diverse spermatogenic defects in humans caused by Y chromosome deletions encompassing a novel RNA-binding protein gene. *Nature Genetics*, 10, 383-393.
37. Chillon, M., Casals, T., Mercier, B., Bassas, L., Lissens, W., Silber, S., et al. (1995) Mutations in the cystic fibrosis gene in patients with congenital absence of the vas deferens. *N Engl J Med*, 332, 1475-1480.
38. Shin, D., Gilbert, F., Goldstein, M., Schlegel, P.N. (1997) Congenital absence of the vas deferens: incomplete penetrance of cystic fibrosis gene mutations. *J Urol*, 158, 1794-1799.
39. Anguiano, A., Oates, R.D., Amos, J.A., Dean, M., Gerrard, B., Stewart, C., et al. (1992) Congenital bilateral absence of the vas deferens: a primarily genital form of cystic fibrosis. *JAMA*, 267, 1794-1797.
40. Palermo, G., Joris, H., Devroey, P. et al. (1992) Pregnancies after intracytoplasmic injection of a single spermatozoa into an oocyte. *Lancet* 3, 17-18.
41. Van Steirteghem, A.C., Nagy, Z., Joris, H., Liu, J., Staessen, C., Smitz, J., et al. (1993) High fertilization and implantation rates after intracytoplasmic sperm injection. *Hum Reprod*, 8, 1061-1066.
42. Nagy, Z., Liu, J., Joris, H., Verheyen, G., Tournaye, H. (1995) The result of intracytoplasmic sperm injection is not related to any of the three basic sperm parameters. *Hum Reprod*, 10, 1123-1129.
43. Liu, J., Nagy, Z., Joris, H., Tournaye, H., Smitz, J., Camus, M., et al. (1995) Analysis of 76 total fertilization failure cycles out of 2,732 intracytoplasmic injection cycles. *Hum Reprod*, 10, 2630-2636.
44. Schoysman, R., Vanderzwalmen, P., Nijs, M., Segal, L., Segal-Bertin, G., Geerts, L., et al. (1993) Pregnancy after fertilization with human testicular spermatozoa. *Lancet*, 342, 1237.

45. Devroey, P., Liu, J., Nagy, A., Tournaye, H., Silber, S.J., Van Steirteghem, A.C. (1994) Normal fertilization of human oocytes after testicular sperm extraction and intracytoplasmic sperm injection (TESE and ICSI). *Fertil Steril*, 62, 639-641.
46. Devroey, P., Silber, S., Nagy, Z., Liu, J., Tournaye, H., Joris, H., et al. (1995a) Ongoing pregnancies and birth after intracytoplasmic sperm injection (ICSI) with frozen-thawed epididymal spermatozoa. *Hum Reprod*, 10, 903-906.
47. Devroey, P., Liu, J., Nagy, Z., Goossens, A., Tournaye, H., Camus, M., et al. (1995b) Pregnancies after testicular extraction (TESE) and intracytoplasmic sperm injection (ICSI) in non-obstructive azoospermia. *Hum Reprod*, 10, 1457-1460.
48. Silber, S.J., Nagy, Z.P., Liu, J., Godoy, H., Devroey, P., Van Steirteghem, A. C. (1994) Conventional IVF versus ICSI for patients requiring microsurgical sperm aspiration. *Hum Reprod*, 9, 1705-1709.
49. Silber, S.J., Van Steirteghem, A.C., Liu, J., Nagy, Z., Tournaye, H., Devroey, P. (1995a) High fertilization and pregnancy rates after ICSI with spermatozoa obtained from testicle biopsy. *Hum Reprod*, 10, 148-152.
50. Silber, S.J., Van Steirteghem, A.C., Devroey, P. (1995c) Sertoli cell only revisited. *Hum Reprod*, 10, 1031-1032.
51. Silber, S.J., Van Steirteghem, A.C., Nagy, Z., Liu, J., Tournaye, H., Devroey, P. (1996) Normal pregnancies resulting from testicular sperm extraction and intracytoplasmic sperm injection for azoospermia due to maturation arrest. *Fertil Steril*, 66, 110-117.
52. Silber, S.J., Nagy, Z., Devroey, P., Tournaye, H., Van Steirteghem, A.C. (1997a) Distribution of spermatogenesis in the testicles of azoospermic men: the presence or absence of spermatids in the testis of men with germinal failure. *Hum Reprod*, 12, 2422-2428.
53. Silber, S.J., Nagy, Z., Devroey, P., Camus, M., Van Steirteghem, A.C. (1997b) The effect of female age and ovarian reserve on pregnancy rate in male infertility: treatment of azoospermia with sperm retrieval and intracytoplasmic sperm injection. *Hum Reprod*, 12, 2693-2700.
54. Silber, S.J. (1998a) Intracytoplasmic sperm injection (ICSI) today: a personal review. *Hum Reprod*, 13, 208-218.
55. Silber, S.J. (1998b) Editorial: The cure and proliferation of male infertility. *J Urol*, 160, 2072-2073.
56. Silber, S.J. and Rodriguez-Rigau, L.J. (1981) Quantitative analysis of testicle biopsy: determination of partial obstruction and prediction of sperm count after surgery for obstruction. *Fertil Steril*, 36, 480-485.
57. Steinberger, E. and Tjioe, D.Y. (1968) A method for quantitative analysis of human seminiferous epithelium. *Fertil Steril*, 19, 960-970.
58. Zukerman, Z., Rodriguez-Rigau, L., Weiss, D.B., Chowdhury, L.J., Smith, K.D., Steinberger, E. (1978) Quantitative analysis of the seminiferous epithelium in human testicle biopsies and the relation of spermatogenesis to sperm density. *Fertil Steril*, 30, 448-455.

59. Page, D.C., Silber, S., Brown, L.G. (1999) Men with infertility caused by AZFc deletion can produce sons by intracytoplasmic sperm injection, but are likely to transmit the deletion and infertility. *Hum Reprod*, 14, 1722-1726.
60. Mulhall, J.P., Reijo, R., Alagappan, R., Brown, L., Page, D., Carson, R., et al. (1997) Azoospermic men with deletion of the DAZ gene cluster are capable of completing spermatogenesis: fertilization, normal embryonic development and pregnancy occur when retrieved testicular spermatozoa are used for intracytoplasmic sperm injection. *Hum Reprod*, 12, 503-508.
61. Faddy, M.J., Silber, S.J. and Gosden, R.G. (2001) Intra-cytoplasmic sperm injection and infertility. *Nature Genetics* 29, 1310.
62. Foote, S., Vollrath, D., Hilton, A., Page, D.C. (1992) The human Y chromosome: Overlapping DNA clones spanning the euchromatic region. *Science*, 258, 60-66.
63. Vollrath, D., Foote, S., Hilton, A., Brown, L.G., Beer-Romero, P., Bogan, J.S., et al. (1992) The human Y chromosome: a 43-interval map based on naturally occurring deletions. *Science*, 258, 52-59.
64. Lahn, B.T. and Page, D.C. (1997) Functional coherence of the human Y chromosome. *Science*, 278, 675-680.
65. Silber, S.J., Alagappan, R., Brown, L.G., Page, D.C. (1998) Y chromosome deletions in azoospermic and severely oligozoospermic men undergoing intracytoplasmic sperm injection after testicular sperm extraction. *Hum Reprod*, 13, 3332-3337.
66. Reijo, R., Alagappan, R.K., Patrizio, P. and Page, D.C. (1996) Severe oligozoospermia resulting from deletions of azoospermia factor gene on Y chromosome. *Lancet*, 347, 1290-1293.
67. Pryor, J.L., Kent-First, M., Muallem, A., Van Bergen, A.H., Nolten, W.E., Meisner, L., et al. (1997) Microdeletions in the Y chromosome of infertile men. *N Eng J Med*, 336, 534-539.
68. Girardi, S.K., Mielnik, A., Schlegel, P.N. (1997) Submicroscopic deletions in the Y chromosome of infertile men. *Hum Reprod*, 12, 1635-1641.
69. Vereb, M., Agulnik, A., Houston, J.T., Lipschultz, L.I., Lamb, D.J., Bishop, C.E. (1997) Absence of DAZ gene mutations in cases of non-obstructed azoospermia. *Mol Hum Reprod*, 3, 55-59.
70. van der Ven, K., Montag, M., Peschka, B., Leygraaf, J., Schwanitz, G., Haidl, G., et al. (1997) Combined cytogenetic and Y chromosome microdeletion screening in males undergoing intracytoplasmic sperm injection. *Mol Hum Reprod*, 3, 699-704.
71. Foresta, C., Ferlin, A., Garolla, A., Rossato, M., Barboux, S., DeBortoli, A. (1997) Y-chromosome deletions in idiopathic severe testiculopathies. *J Clin Endocrinol Metab*, 82, 1075-1080.
72. Chai, N.N., Zhou, H., Hernandez, J., Najmabadi, H., Bhasin, S., Yen, P.H. (1998) Structure and organization of the RBMY genes on the human Y chromosome: transposition and amplification of an ancestral autosomal hnRNPG gene. *Genomics* 49(2), 283-289.

73. Elliott, D.J., Millar, M.R., Oghene, K., Ross, A., Kiesewetter, F., Pryor, J., et al. (1997) Expression of RBM in the nuclei of human germ cells is dependent on a critical region of the Y chromosome long arm. *Proc Natl Acad Sci USA*, 94, 3848-3853.
74. Nakahori, Y., Kuroki, Y., Komaki, R., Kondoh, N., Namiki, M., Iwamoto, T., et al. (1996) The Y chromosome region essential for spermatogenesis. *Hormone Research*, 46, 20-23.
75. Qureshi, S.J., Ross, A.R., Ma, K., Cooke, H.J., Intyre, M.A., Chandley, A.C., et al. (1996) Polymerase chain reaction screening for Y chromosome microdeletions: a first step towards the diagnosis of genetically-determined spermatogenic failure in men. *Mol Hum Reprod*, 2, 775-779.
76. Najmabadi, H., Huang, V., Yen, P., Subbarao, M.N., Bhasin, D., Banaag, L., et al. (1996) Substantial prevalence of microdeletions of the Y-chromosome in infertile men with idiopathic azoospermia and oligozoospermia detected using a sequence-tagged site-based mapping strategy. *J Clin Endo & Metab*, 81, 1347-1352.
77. Simoni, M., Gromoll, J., Dworniczak, B., Rolf, C., Abshagen, K., Kamischke, A., et al. (1997) Screening for deletions of the Y chromosome involving the DAZ (Deleted in Azoospermia) gene in azoospermia and severe oligozoospermia. *Fertil Steril*, 67, 542-547.
78. Bhasin, S., deKretser, D.M., and Baker, H.W.G. (1994) Pathophysiology and natural history of male infertility. *J Clin Endocrinol Metab* 79, 1525-1529.
79. Kent-First, M., Muallem, A., Shultz, J. et al. (1999) Defining regions of the Y-chromosome responsible for male infertility and identification of a fourth AZF region (AZFd) by Y-chromosome microdeletion detection. *Mol Reprod Dev* 53, 27-41.
80. Morris, R.S. and Gleicher, N. (1996) Genetic abnormalities, male infertility, and ICSI. *Lancet*, 347, 1277.
81. Chang, P.L., Sauer, M.V., and Brown, S. (1999) Y chromosome microdeletion in a father and his four infertile sons. *Hum Reprod* 14, 2689-2694.
82. Cram, D.S., Ma, K., Bhasin, S., et al. (2000) Y chromosome analysis of infertile men and their sons conceived through intracytoplasmic sperm injection: vertical transmission of deletions and rarity of de novo deletions. *Fertil Steril* 74, 909-915.
83. Grimaldi, P., Scarponi, C., and Rossi, P. et al. (1998) Analysis of Yq microdeletions in infertile males by PCR and DNA hybridization techniques. *Mol Hum Reprod* 4, 1116-1124.
84. Kim, S.W., Kim, K.D., and Paick, J.S. (1999) Microdeletions within the azoospermia factor subregions of the Y chromosome in patients with idiopathic azoospermia. *Fertil Steril* 72, 349-353.
85. Krausz, C., Bussani-Mastellone, C., Grauchi, S. et al. (1999) Screening for microdeletions of the Y chromosome genes in patients undergoing intracytoplasmic sperm injection. *Hum Reprod* 14 1717-1721.
86. Liow, S.L., Ghadessy, F.J., N, S.C. and Yong, E.L. (1998) Y chromosome microdeletions in azoospermic or near-azoospermic subjects are located in the AZFc (DAZ) subregion. *Molec Hum Reprod* 4, 763-768.
87. Oliva, R., Margarit, E., Ballesca, J-L. et al. (1998) Prevalence of Y chromosome microdeletions in oligospermic and azoospermic candidates for intracytoplasmic sperm injection. *Fertil Steril* 70, 506-510.

88. Seifer, I., Amat, S., Delgado-Viscogliosi, P. et al. (1999) Screening for microdeletions on the long arm of chromosome Y in 53 infertile men. *Int J Androl* 22, 148-154.
89. Stuppia, L., Gatta, V., Calabrese, G., et al. (1998) A quarter of men with idiopathic oligo-azoospermia display chromosomal abnormalities and microdeletions of different types in interval 6 of Yq11. *Hum Genetics* 102, 566-570.
90. Van Golde, R.J.T., Wetzels, A.M.M., de Graaf, R., et al. (2001) Decreased fertilization rate and embryo quality after ICSI in oligozoospermic men with microdeletions in the azoospermia factor c region of the Y chromosome. *Hum Reprod* 16, 289-292.
91. Van Landuyt, L., Lissens, W., Stouffs, ., et al. (2000) Validation of a simple Yq deletion screening programme in an ICSI candidate population. *Molec Hum Reprod* 6, 291-297.
92. Prosser, J., Inglis, J.D., Condie, A., Ma, K., Kerr, S., Thakrar, R., Taylor, K., Cameron, J.M., Cooke, H.J. (1996) Degeneracy in human multicopy RBM (YRRM), a candidate spermatogenesis gene. *Mamm Genome* 7(11), 835-842.
93. Vogt, P.H. (1998) Human chromosome deletions in Yq11, AZF candidate genes and male infertility: history and update. *Mol Hum Reprod* 4(8), 739-744.
94. Saxena, R., Brown, L.G., Hawkins, T., Alagappan, R.K., Skaletsky, H., Reeve, M.P., et al. (1996) The DAZ gene cluster on the human Y chromosome arose from an autosomal gene that was transposed, repeatedly amplified and pruned. *Nature Genetics*, 14, 292-299.
95. Menke, D.B., Mutter, G.L., Page, D.C. (1997) Expression of DAZ, an azoospermia factor candidate, in human spermatogonia. *Am J Hum Genet*, 60, 237-241.
96. Cooke, H.J., Lee, M., Kerr, S., Ruggiu, M. (1996) A murine homologue of the human DAZ gene is autosomal and expressed only in male and female gonads. *Hum Mol Genet*, 5, 513-516.
97. Ruggiu, M., Speed, R., Taggart, M., et al. (1997) The mouse *Dazl* gene encodes a cytoplasmic protein essential for gametogenesis. *Nature*, 389, 73-77.
98. Saxena, R., deVries, J.W.A., Repping, S., Alagappan, R.K., Skaletsky, H., Brown, L.G., Ma, P., Chen, E.S., Hoover, J.M.N. et al. (2000) Four DAZ genes in two clusters found in the AZFc region on the human Y chromosome. *Genomics* 67(3), 256-267.
99. deVries, J.W., Repping, S., Oates, R., Carson, R., Leschot, N.J., vanderVeen, F. (2001a) Absence of deleted in azoospermia (DAZ) genes in spermatozoa of infertile men with somatic DAZ deletions. *Fertil Steril* 75, 476-479.
100. deVries, J.W.A., Hoffer, J.V., Repping, S., Hoovers, M.M.N., Leschot, N.J., vanderVeen, F. (2002) Reduced copy number of DAZ genes in subfertile and infertile men. *Fertil Steril* 77, 68-75.
101. Brandell, R.A., Mielnik, A., Liotta, D., Ye, Z., Veeck, L.L., Palermo, G.D. and Schlegel, P.N. (1998) AZFb deletions predict the absence of spermatozoa with testicular sperm extraction: preliminary report of a prognostic genetic test. *Hum Reprod* 13, 2812-2815.
102. Kuroda-Kawaguchi, T., Skaletsky, H., Brown, L., Minx, P., Cordum, H., Waterston, R., Wilson, R., Silber, S., Oates, R., Rozen, S. and Page, D. (2001) The human Y chromosome's AZFc region features massive palindromes, uniform recurrent deletions, and testis gene families. *Nature Genetics* 29, 279-286.
103. Lahn, B.T. and Page, D.C. (1999a) Four evolutionary strata on the human X chromosome. *Science*, 286, 964-967.
104. Sun, C., Skaletsky, H., Birren, B., Devon, K., Tang, Z., Silber, S., et al. (1999) An azoospermic man with a de novo point mutation in the Y- chromosomal gene USP9Y. *Nature Genetics*, 23, 429-432.
105. Yen P. (2001) The fragility of fertility. *Nature Genetics* 29, 243-244.
106. Tilford, C.A., Kuroda-Kawaguchi, T., Skaletsky, H., Rozen, S., Brown, L.G., Rosenberg, M., McPherson, J.D., Wylie, K., Sekhon, M., Kucaba, T., Waterston, R.H., Page, D.C. (2001) A physical map of the human Y chromosome. *Nature*, 409, 943-945.
107. Sun, C., Skaletsky, H., Rozen, S., Gromoll, J. et al. (2000) Deletion of azoospermia factor a (AZFa) region of human Y chromosome caused by recombination between HERV 15 proviruses. *Hum Mol Genet* 9, 2291-2296.

108. Tournaye, H., Devroey, P., Liu, J., Nagy, Z., Lissens, W., Van Steirteghem, A. (1994) Microsurgical epididymal sperm aspiration and intracytoplasmic sperm injection: a new effective approach to infertility as a result of congenital bilateral absence of the vas deferens. *Fertil Steril*, 61, 1045-1051.
109. Silber, S.J., Page, D.C., Brown, L.G. and Oates, R. (2001) Diverse testicular defects in infertile men with Y deletions and their ICSI offspring. Abstract presented at 2001 Annual Meeting of European Society of Human Reproduction and Embryology, Lausanne, Switzerland.
110. Rice, W.R. (1992) Sexually antagonistic genes: experimental evidence. *Science*, 256, 1436-1439.
111. Rice, W.R. (1994) Degeneration of a non-recombining chromosome. *Science*, 263, 230-232.
112. Rice, W.R. (1996) Evolution of the Y sex chromosome in animals. *Bio Science*, 46, 331-343.
113. Graves, J.A.M. (1995a) The origin and function of the mammalian Y chromosome and Y-borne genes – an evolving understanding. *Bioessays*, 17, 311-320.
114. Graves, J.A.M. (1995b) The evolution of mammalian sex chromosomes and the origin of sex determining genes. *Phil Trans R Soc Lond B* 350, 305-312.
115. Graves, J.A.M. (2000) Human Y chromosome, sex determination, and spermatogenesis - a feminist view. *Biol Reprod* 63(3), 667-676.
116. Lahn, B.T. and Page, D.C. (1999b) Retroposition of autosomal in RNA yield testis-specific gene family on human Y chromosome. *Nature Genetics*, 21, 429-433.
117. Delbridge, M.L., Harry, J.L., Toder, R., O'Neill, R.J.W., Ma, K., Chandley, A.C., et al. (1997) A human candidate spermatogenesis gene, RBM1, is conserved and amplified on the marsupial Y chromosome. *Nature Genetics*, 15, 131-136.
118. Vogel, T., Speed, R.M., Teague, P., Cooke, H.J. (1999) Mice with Y chromosome deletion and reduced RBM genes on a heterozygous DAZL1 null background mimic a human azoospermic factor phenotype. *Hum Reprod*, 14, 3023-3029.
119. Delbridge, M.L. and Graves, J.A. (1999) Mammalian Y chromosome evolution and the male-specific functions of Y chromosome-born genes. *Rev Reprod*, 4, 101-109.
120. Delbridge, M.L., Lingenfelter, P.A., Disteche, C.M., Graves, J.A. (1999) The candidate spermatogenesis gene RBMY has a homologue on the human X chromosome. *Nature Genetics*, 22, 223-224.
121. Mazeyrat, S., Saut, N., Mattei, M.G., Mitchell, M.J. (1999) RBMY evolved on the Y chromosome from a ubiquitously transcribed X-Y identical gene. *Nature Genetics*, 22, 224-226.
122. Graves, J.A.M. (1997) Two uses for old SOX. *Nature Genetics* 16, 114-115.
123. Pask, A. and Graves, J.A.M. (1999) Sex chromosomes and sex-determining genes: insights from marsupials and monotremes. *Cell Mol Life Ser* 55, 864-875.
124. Vidal, V.P.I., Chaboissier, M-C., de Rooij, D.G. and Schedl, A. (2001) Sox9 induces testis development in XX transgenic mice. *Nature Genetics* 28, 216-217.
125. Silber, S.J. (1999) The disappearing male. In: *Jansen R, Mortimer D. eds. Towards reproductive certainty - fertility & genetics beyond 1999*. New York/London: The Parthenon Publishing Group, 499-505.
126. Winge, O. (1927) The location of eighteen genes in *Lebistes reticulatus*. *J Genet*, 18, 1-43.
127. Charlesworth, D., and Charlesworth, B. (1980) Sex-differences in fitness and selection for centric fusions between sex chromosomes and autosomes. *Genet Res*, 35, 205-214.
128. Graves, J.A.M., Disteche, C.M., and Toder, R. (1998) Gene dosage in the evolution and function of mammalian sex chromosomes. *Cytogenet Cell Genet* 80, 94-103.
129. Jegalian, K. and Page, D.C. (1998) A proposed path by which genes common to mammalian X and Y chromosomes evolve to become X inactivated. *Nature*, 394, 776-780.

130. Jacobs, P.A., Broune, C., Gregson, N., Joyce, C., White, H. (1992) Estimates of the frequency of chromosome anomalies detectable using moderate levels of banding. *J Med Genet*, 29, 103-108.
131. Olson, S.D. and Magenis, R.E. (1988) Preferential paternal origin of *de novo* structural rearrangements. In: *Daniel A, ed. The Cytogenetics of Mammalian Autosomal Rearrangements*. New York: Alan R. Liss, 583-599.
132. Palermo, G.D., Schlegel, P.N., Sills, E.S., Veeck, L.L., Zaninovic, N., Menendez, S., et al. (1998) Births after intracytoplasmic injection of sperm obtained by testicular extraction from men with nonmosaic Klinefelter's syndrome. *N Engl J Med*, 338, 588-590.
133. Tournaye, H., Staessen, C., Liebaers, I., Van Assche, E., Devroey, P., Bonduelle, M., et al. (1996) Testicular sperm recovery in nine 47,XXY Klinefelter patients. *Hum Reprod*, 11, 1644-1649.
134. Staessen, C., Coonen, E., Van Assche, E., Tournaye, H., Joris, H., Devroey, P., et al. (1996) Preimplantation diagnosis for X and Y normality in embryos from three Klinefelter patients. *Hum Reprod*, 11, 1650-3.
135. Levron, J., Aviram-Goldring, Madgar, I., Raviv, G., Bankai, G. and Dor, J. (2000) Sperm chromosome analysis and outcome of IVF in patients with non-mosaic Klinefelter's Syndrome. *Fertil Steril* 74, 925-929.
136. Silber, S.J. (2001) The varicocele dilemma. *Hum Reprod* 7(1), 70-77.
137. Rice, W.R. (1984) Sex-chromosomes and the evolution of sexual dimorphism. *Evolution* 38, 735-742.
138. Brooks, R. (2000) Negative genetic correlation between male sexual attractiveness and survival. *Nature* 406, 67-70.
139. Fisher, R.A. (1931) The evolution of dominance. *Biol Rev* 6, 345-368.
140. Wang, P.J., McCarrey, J.R., Yang, F. and Page, D.C. (2001) An abundance of X-linked genes expressed in spermatogonia. *Nature Genetics* 27, 422-426.
141. Silber, S.J. (2000a) Evaluation and treatment of male infertility. *Clin Ob and Gyn* 43(4), 854-888.
142. Silber, S.J. (2000b) Microsurgical TESE and the distribution of spermatogenesis in non-obstructive azoospermia. *Hum Reprod* 15(11), 2278-2284.

**ADDITIONAL REFERENCES**

1. Aboulghar, H., Aboulghar, M., Mansour, R., et al. (2001) A prospective controlled study of karyotyping for 430 consecutive babies conceived through intracytoplasmic sperm injection. *Fertil Steril* 76, 249-253.
2. Affara, N., Bishop, C., Brown, W., et al. (1996) Report of the Second International Workshop on Y Chromosome Mapping 1995. *Cytogenet Cell Genet* 73, 33-76.
3. Bienvenu, T., Patrat, C., McElreavey, K., et al. (2001) Reduction in the DAZ gene copy number in two infertile men with impaired spermatogenesis. *Ann Genet* 44, 125-128.
4. Blanco, P., Shlumukova, M., Sargent, C.A., et al. (2000) Divergent outcomes of intrachromosomal recombination on the human Y chromosome: male infertility and recurrent polymorphism. *J Med Genet* 37, 752-758.
5. Brown, G.M., Furlong, R.A., Sargent, C.A., et al. (1998) Characterisation of the coding sequence and fine mapping of the human DFFRY gene and comparative expression analysis and mapping to the Sxrb interval of the mouse Y chromosome of the DFFRY gene. *Hum Mol Genet* 7, 97-107.
6. Chandley, A.C. (1979) The chromosomal basis of human infertility. *Br Med Bull* 35, 181-186.
7. Foresta, C., Moro, E., Ferlin, A. (2001) Prognostic value of Y deletion analysis: The role of current methods. *Hum Reprod* 16, 1543-1547.
8. Giltay, J.C., Kastrop, P.M., Tuerlings, J.H., et al. (1999) Subfertile men with constitutive chromosome abnormalities do not necessarily refrain from intracytoplasmic sperm injection treatment: a follow-up study on 75 Dutch patients. *Hum Reprod* 14, 318-320.
9. Houston, D.W., Zhang, J., Maines, J.Z., et al. (1998) A xenopus DAZ-like gene encodes an RNA component of germ plasma and is a functional homologue of Drosophila boule. *Development* 125, 171-180.
10. Jacobs, P.A. and Strong, J.A. (1959) A case of human intersexuality having a possible XXY sex-determining mechanism. *Nature* 183, 302-303.
11. Kamp, C., Hirschmann, P., Voss, H., et al. (2000) Two long homologous retroviral sequence blocks in proximally Yq11 cause AZFa microdeletions as a result of intrachromosomal recombination events. *Hum Mol Genet* 9, 2563-2572.
12. Karashima, T., Sugimoto, A., Yamamoto, M.A. (1997) *C. elegans* homologue of DAZ/boule is involved in progression through meiosis during oogenesis. *Worm Breeder's Gazette* 15, 65.
13. LeBourhis, C., Stiffroi, J.P., McElreavey, K., et al. (2000) Y chromosome microdeletions and germinal mosaicism in infertile males. *Mol Hum Reprod* 6, 688-693.
14. Liow, S.L., Yong, E.L., Ng, S.C. (2001) Prognostic value of Y deletion analysis: How reliable is the outcome of Y deletion analysis in providing a sound prognosis? *Hum Reprod* 16, 9-12.
15. Martinez, M.C., Bernabe, M.J., Gomez, E., et al. (2000) Screening for AZF deletion in a large series of severely impaired spermatogenesis patients. *J Androl* 21, 651-655.
16. Moore, F., Jaruzelska, J., Castillo, M., et al. (2001) Hints on DAZ protein function: interaction with a zinc-finger protein, DZIP. *Fertil Steril*, 57<sup>th</sup> annual meeting of the ASRM, Orlando, USA, Abstract O-109.

17. Moro, E., Ferlin, A., Yen, P.H., et al. (2000) Male infertility caused by a de novo partial deletion of the DAZ cluster on the Y chromosome. *J Clin Endocrinol Metab* 85, 4069-4073.
18. Rovio, A.T., Marchington, D.R., Donat, S., et al. (2001) Mutations at the mitochondrial DNA polymerase (POLG) locus associated with male infertility. *Nat Genet* 29, 261-262.
19. Sargent, C.A., Boucher, C.A., Kirsch, S., et al. (1999) The critical region of overlap defining the AZFa male infertility interval of proximal Yq contains three transcribed sequences. *J Med Genet* 36, 670-677.
20. Saut, N., Terriou, P., Navarro, A. et al. (2000) The human Y chromosome genes BPY2, CDY1 and DAZ are not essential for sustained fertility. *Mol Hum Reprod* 6, 789-793.
21. Silber, S.J. (2001) Spontaneous pregnancy in couples with very severe oligo-azoospermia (<math>0.5 \times 10^6</math> sperm): implications for transmission of Y chromosome deletions. *Fertil Steril*, 57<sup>th</sup> annual meeting of the ASRM, Orlando, USA. Abstract O-026.
22. Silber, S.J., Page, D.C., Brown, L.G. et al. (2001a) Diverse testicular defects in infertile men with Y deletions and their ICSI offspring. *Hum Reprod*, 17<sup>th</sup> annual meeting of the ESHRE, Lausanne, Switzerland. Abstract O-096.
23. Silber, S.J., Page, D., Brown, L. et al. (2001b) ICSI results with and without Y chromosomal deletions in men with severe oligo-azoospermia and azoospermia. *Fertil Steril*, 57<sup>th</sup> annual meeting of the ASRM, Orlando, USA. Abstract P-83.
24. Simoni, M. (2001) Molecular diagnosis of Y chromosome micro deletions in Europe: State-of-the-art and quality control. *Hum Reprod* 16, 402-409.
25. Sutcliffe, A.G. (2000) Intracytoplasmic sperm injection and other aspects of new reproductive technologies. *Arch Dis Child* 83, 98-101.
26. Sutcliffe, A.G., Taylor, B., Saunders, K., et al. (2001) Outcome in the second year of life after in-vitro fertilization by intracytoplasmic sperm injection: a UK case-control study. *Lancet* 357, 2080-2084.
27. Tuerlings, J.H., de France, H.F., Hamers, A., et al. (1998) chromosome studies in 1792 males prior to intra-cytoplasmic sperm injection: the Dutch experience. *Eur J Hum Genet* 6, 194-200.
28. Xu, E.Y., Moore, F.L., Pera, R.A. (2001) A gene family required for human germ cell development evolved from an ancient meiotic gene conserved in metazoans. *Proc Natl Acad Sci USA* 98, 7414-7419.

Table 1a: Percentage of Chromosome Abnormalities Observed in Seven Series of Infertile Men (Azoospermic and Oligospermic) Compared to Normal Newborn Population

<b>All References</b>	<b>Number</b>	<b>Chromosomes</b>	<b>Sex</b>	
			<b>Autosomes</b>	<b>Total</b>
Total (Azoospermic and Oligospermic)	7,876	295 (3.8)	104 (1.3)	399 (5.1)
Newborn Infants (Control)	94,465	131 (0.14)	232 (0.25)	366 (0.38)

---

Van Assche *et al.*, 1996

Table 1b: Results of ICSI in Y-Deleted Versus Y Non-Deleted Men with Severe Oligospermia (<math>2 \times 10^6</math>) and Azoospermia (Non-Obstructive)

	<u>Y-Deleted (&lt;math&gt;2 \times 10^6&lt;/math&gt;)</u>	<u>Not Y-Deleted (&lt;math&gt;2 \times 10^6&lt;/math&gt;)</u>
# Patients (with sperm)	23	205
# Cycles (with sperm)	45	312
# Eggs	508	3291
# 2PN	(289) 57%	1849) 56%
# Pregnant	(17) 38%	(112) 36%
# Deliveries	(13) 29%	(81) 26%
# Babies	18	99
# Boys	10	43
# Girls	8	56

Table 2: Genes of the DAZ Family in Vertebrates and Drosophila

	<u>Y Chromosomal</u>	<u>Autosomal</u>
Human	DAZ cluster (at least 4 copies, > 99% identical)	DAZL (chrom. 3)
Mouse		DAZL (Dazla) (chrom. 17)
Xenopus		Xdazl
Drosophila		boule
C. elegans		daz-1

Table 3: Arrival of Spermatogenesis Genes to Y Chromosome

	<u>Y Gene</u>	<u>Ancestral Gene</u>
Transposition	DAZ (AZFc) Human-Y	DAZL (autosomal) Mouse 17 Human 3
Retroposition	CDY (AZFc) Human-Y	CDYL (autosomal) Mouse 13 Human 6
Persistence	RBM (AZFb) Human-Y and Mouse-Y	RBMX Mouse X Human X
Persistence	SRY	SOX-3

Table 4: Persistence on Y of RBM X

<u>Y Gene</u>	<u>Ancestral Gene</u>
<u>SRY</u>	<u>SOX-3</u>
Determines Male Sex	No male specific function
<u>RBM-Y</u>	<u>RBM-X</u>
Male specific function	No male specific function
Numerous copies	One copy
Many degenerate	
Same in all therian mammals	

Table 5: Persistence on Y of X Genes

	<u>Y Gene</u>	<u>Ancestral X Gene</u>
	<b>SRY</b>	<b>SOX-3</b>
	Determines male sex	No male specific function
	<b><u>RPS4-Y</u></b>	<b><u>RPS4-X</u></b>
Human	Housekeeping	Housekeeping
	Ubiquitous	Ubiquitous
	Turner Gene	No X-inactivation
Mouse	No RPS4-Y	Housekeeping
	Evolved out of existence	Is X-inactivated
	<b><u>ZFY</u></b>	<b><u>ZFX</u></b>
Human	Housekeeping	Housekeeping
	Ubiquitous	Ubiquitous
	Turner Gene	No X-inactivation
Mouse	Male specific function only	Housekeeping
	Two copies only	Ubiquitous
		Is X-inactivated

Table 6: Karyotype Anomalies in 1,082 Prenatal Diagnosis

Abnormal Karyotypes On 1,082 Prenatal Tests	Maternal		Percent	Percent in Literature
	Age (years)	Number		
<u>De novo chromosomal aberrations</u>		18	1.66	0.445
Sex-chromosomal:		9	0.83	0.19, 0.23
45, X	37			
46, XX/47, XXX	44			
47, XXX (2 children)	32, 37			
47, XXY (4 children)	26, 28, 28, 32			
47, XYY	25			
Autosomal:		9	0.83	0.21, 0.61
Trisomy 21 (5 children)	32, 33, 37, 41, 41	5	0.46	0.14
structural		4	0.36	0.07
46, XXY, t (4;5)	30x			
46, XX, t (2;15)	30			
46, XX, t (2;13)	36			
46, XX, inv (1qh)	39			
<u>Inherited aberrations</u>		10	0.92	0.47
balanced		9	0.83	0.45
unbalanced		1	0.09	0.023
<u>Total aberrations</u>		28	2.5	0.92, 0.84
<u>de novo + inherited</u>				

(Bonduelle et al., 1995; Bonduelle et al., 1996; Bonduelle et al., 1998; Bonduelle et al., 1999)

**LEGENDS**

- Figure 1a/1b: Karyotype of the azoospermic male with cytogenetically visible Yq deletion compared to karyotype of a azoospermic male with a normal Y chromosome.
- Figure 2: Y chromosome map based on STS interval markers and their corresponding X-homologous and testis specific gene.
- Figures 3a: Typical early deletion map of azoospermic and severely oligospermic men with chromosomal micro deletion.
- Figures 3b/3c: More refined, later deletion maps of azoospermic and severely oligospermic men.
- Figure 4: Figurative outline of evolutionary degeneration of one chromosome with the testicular determining factor (TDF) gene which doesn't recombine with its homologue, resulting eventually in a Y chromosome
- Figure 5: Over the course of evolution, the Y chromosome descended from the ancestral autosome that developed the SRY male-determining gene. The Y then attracted male-specific genes by three mechanisms. (Lahn and Page, modified, 1999b)
- Figure 6: Graphic depiction of X-homologous genes on the Y chromosome representing four different stages of a divergence from its original ancestral X showing corresponding X and Y homologous genes. Note that SOX3 and RBMX come from the earliest region of sequence divergence and correlate with the SRY gene and the RBMY gene. (Lahn and Page, 1999a)
- Figure 7: The Y chromosome has a remarkable functional coherence not seen in any other chromosomes. Genes depicted above are X-homologous because of their equal similarity to genes on the X chromosome. Genes depicted below are Y-specific genes which are testis specific, expressed only in the testis, and have no X-homologues. (Lahn and Page, modified, 1997)
- Figure 8: Whereas DAZ was transposed to the Y chromosome approximately 30 million years ago (after the divergence of old world and new world monkeys), CDY arrived on the Y chromosome much earlier (50 million years ago) by a process of reverse transcription. (Lahn and Page, 1999b)
- Figure 9: The X and the Y chromosome develop in mammals at the time of divergence the avian and mammalian line by a series of four well defined inversions. The earliest inversions (region 1 on the X) have the least similarity to their Y-homologue, and genes in the most recent area of divergence (region 4) have the greatest sequence similarity of their counterpart on the Y. (Lahn and Page, modified, 1999a)
- Figure 10: X-inactivation develops after X-linked hyper expression as a pairing mechanism between the evolving X and Y chromosomes to compensate for decay of X genes on the evolving Y. (Jegalian and Page, 1998)
- Figure 11: The AZFc Y deletion present in the azoospermic or severely oligospermic father is not present in his father, but is transmitted to his sons via ICSI. (Page, Silber, Brown, 1999)
- Figure 12a: Amplicons and palindromes in 4.5-Mb portion of the human Y chromosome that includes AZFc. Dot-plot in which region's sequence is compared with itself. This compressed, triangular plot avoids redundancies and false symmetries that would appear in a conventional square plot. Amplicons of various families (blue,

turquoise, green, red, gray and yellow arrows) are shown at the base of the plot. Each dot within the plot represents a perfect match of 500 bp. Direct repeats are shown as horizontal lines, inverted repeats as vertical lines and palindromes as vertical lines that nearly intersect the baseline. Palindromes P1, P2 and P3 are indicated, as are two smaller palindromes, P1.1 and P1.2, that lie within P1. Tinted squares reflect pairs of amplicons with nearly identical sequences; the adjacent numbers denote substitutions per 10 kb. Gray diagonal lines mark amplicon boundaries. Selected amplicons (b1, t1, t2, b2, g1, r1, r2, b3, g2, r3, r4, g3 and b4) are identified, as are sequences that occur once within the 4.5-Mb region (u1, u2 and u3). Orientation with respect to the centromere (cen) and long-arm telomere (qter) is shown. The full annotated sequence of the 4.5-Mb region is available in Web Tables A, B and C and Web Note A. *Kuroda-Kawaguchi T, Skaletsky H, Brown LG, Minx PJ, Holland SC, Waterston RH, Wilson RK, Silber S, Oates R, Rozen S and Page D. The AZFc region of the Y chromosome features massive palindromes and uniform recurrent deletions in infertile men. 2001, Nature Genetics 29, 279-286.*

Figure 12b: Sequence-based map of STSs, deletions, transcription units and autosomal homologies. *Kuroda-Kawaguchi T, Skaletsky H, Brown LG, Minx PJ, Holland SC, Waterston RH, Wilson RK, Silber S, Oates R, Rozen S and Page D. The AZFc region of the Y chromosome features massive palindromes and uniform recurrent deletions in infertile men. 2001, Nature Genetics 29, 279-286.*

**FIGURE 1a**

**FIGURE 1b**



FIGURE 2

Continuation of the submission number for 2017

Year	Submission Number	Submission Title	Submission Type
2017	101	101	101
2017	102	102	102
2017	103	103	103
2017	104	104	104
2017	105	105	105
2017	106	106	106
2017	107	107	107
2017	108	108	108
2017	109	109	109
2017	110	110	110
2017	111	111	111
2017	112	112	112
2017	113	113	113
2017	114	114	114
2017	115	115	115
2017	116	116	116
2017	117	117	117
2017	118	118	118
2017	119	119	119
2017	120	120	120
2017	121	121	121
2017	122	122	122
2017	123	123	123
2017	124	124	124
2017	125	125	125
2017	126	126	126
2017	127	127	127
2017	128	128	128
2017	129	129	129
2017	130	130	130
2017	131	131	131
2017	132	132	132
2017	133	133	133
2017	134	134	134
2017	135	135	135
2017	136	136	136
2017	137	137	137
2017	138	138	138
2017	139	139	139
2017	140	140	140
2017	141	141	141
2017	142	142	142
2017	143	143	143
2017	144	144	144
2017	145	145	145
2017	146	146	146
2017	147	147	147
2017	148	148	148
2017	149	149	149
2017	150	150	150
2017	151	151	151
2017	152	152	152
2017	153	153	153
2017	154	154	154
2017	155	155	155
2017	156	156	156
2017	157	157	157
2017	158	158	158
2017	159	159	159
2017	160	160	160
2017	161	161	161
2017	162	162	162
2017	163	163	163
2017	164	164	164
2017	165	165	165
2017	166	166	166
2017	167	167	167
2017	168	168	168
2017	169	169	169
2017	170	170	170
2017	171	171	171
2017	172	172	172
2017	173	173	173
2017	174	174	174
2017	175	175	175
2017	176	176	176
2017	177	177	177
2017	178	178	178
2017	179	179	179
2017	180	180	180
2017	181	181	181
2017	182	182	182
2017	183	183	183
2017	184	184	184
2017	185	185	185
2017	186	186	186
2017	187	187	187
2017	188	188	188
2017	189	189	189
2017	190	190	190
2017	191	191	191
2017	192	192	192
2017	193	193	193
2017	194	194	194
2017	195	195	195
2017	196	196	196
2017	197	197	197
2017	198	198	198
2017	199	199	199
2017	200	200	200



FIGURE 3b

AZT5	AZT6	AZT7	AZT8	AZT9	AZT10	AZT11	AZT12	AZT13	AZT14	AZT15	AZT16	AZT17	AZT18	AZT19	AZT20	AZT21	AZT22	AZT23	AZT24	AZT25	AZT26	AZT27	AZT28	AZT29	AZT30	AZT31	AZT32	AZT33	AZT34	AZT35	AZT36	AZT37	AZT38	AZT39	AZT40	AZT41	AZT42	AZT43	AZT44	AZT45	AZT46	AZT47	AZT48	AZT49	AZT50	AZT51	AZT52	AZT53	AZT54	AZT55	AZT56	AZT57	AZT58	AZT59	AZT60	AZT61	AZT62	AZT63	AZT64	AZT65	AZT66	AZT67	AZT68	AZT69	AZT70	AZT71	AZT72	AZT73	AZT74	AZT75	AZT76	AZT77	AZT78	AZT79	AZT80	AZT81	AZT82	AZT83	AZT84	AZT85	AZT86	AZT87	AZT88	AZT89	AZT90	AZT91	AZT92	AZT93	AZT94	AZT95	AZT96	AZT97	AZT98	AZT99	AZT100	AZT101	AZT102	AZT103	AZT104	AZT105	AZT106	AZT107	AZT108	AZT109	AZT110	AZT111	AZT112	AZT113	AZT114	AZT115	AZT116	AZT117	AZT118	AZT119	AZT120	AZT121	AZT122	AZT123	AZT124	AZT125	AZT126	AZT127	AZT128	AZT129	AZT130	AZT131	AZT132	AZT133	AZT134	AZT135	AZT136	AZT137	AZT138	AZT139	AZT140	AZT141	AZT142	AZT143	AZT144	AZT145	AZT146	AZT147	AZT148	AZT149	AZT150	AZT151	AZT152	AZT153	AZT154	AZT155	AZT156	AZT157	AZT158	AZT159	AZT160	AZT161	AZT162	AZT163	AZT164	AZT165	AZT166	AZT167	AZT168	AZT169	AZT170	AZT171	AZT172	AZT173	AZT174	AZT175	AZT176	AZT177	AZT178	AZT179	AZT180	AZT181	AZT182	AZT183	AZT184	AZT185	AZT186	AZT187	AZT188	AZT189	AZT190	AZT191	AZT192	AZT193	AZT194	AZT195	AZT196	AZT197	AZT198	AZT199	AZT200	AZT201	AZT202	AZT203	AZT204	AZT205	AZT206	AZT207	AZT208	AZT209	AZT210	AZT211	AZT212	AZT213	AZT214	AZT215	AZT216	AZT217	AZT218	AZT219	AZT220	AZT221	AZT222	AZT223	AZT224	AZT225	AZT226	AZT227	AZT228	AZT229	AZT230	AZT231	AZT232	AZT233	AZT234	AZT235	AZT236	AZT237	AZT238	AZT239	AZT240	AZT241	AZT242	AZT243	AZT244	AZT245	AZT246	AZT247	AZT248	AZT249	AZT250	AZT251	AZT252	AZT253	AZT254	AZT255	AZT256	AZT257	AZT258	AZT259	AZT260	AZT261	AZT262	AZT263	AZT264	AZT265	AZT266	AZT267	AZT268	AZT269	AZT270	AZT271	AZT272	AZT273	AZT274	AZT275	AZT276	AZT277	AZT278	AZT279	AZT280	AZT281	AZT282	AZT283	AZT284	AZT285	AZT286	AZT287	AZT288	AZT289	AZT290	AZT291	AZT292	AZT293	AZT294	AZT295	AZT296	AZT297	AZT298	AZT299	AZT300	AZT301	AZT302	AZT303	AZT304	AZT305	AZT306	AZT307	AZT308	AZT309	AZT310	AZT311	AZT312	AZT313	AZT314	AZT315	AZT316	AZT317	AZT318	AZT319	AZT320	AZT321	AZT322	AZT323	AZT324	AZT325	AZT326	AZT327	AZT328	AZT329	AZT330	AZT331	AZT332	AZT333	AZT334	AZT335	AZT336	AZT337	AZT338	AZT339	AZT340	AZT341	AZT342	AZT343	AZT344	AZT345	AZT346	AZT347	AZT348	AZT349	AZT350	AZT351	AZT352	AZT353	AZT354	AZT355	AZT356	AZT357	AZT358	AZT359	AZT360	AZT361	AZT362	AZT363	AZT364	AZT365	AZT366	AZT367	AZT368	AZT369	AZT370	AZT371	AZT372	AZT373	AZT374	AZT375	AZT376	AZT377	AZT378	AZT379	AZT380	AZT381	AZT382	AZT383	AZT384	AZT385	AZT386	AZT387	AZT388	AZT389	AZT390	AZT391	AZT392	AZT393	AZT394	AZT395	AZT396	AZT397	AZT398	AZT399	AZT400	AZT401	AZT402	AZT403	AZT404	AZT405	AZT406	AZT407	AZT408	AZT409	AZT410	AZT411	AZT412	AZT413	AZT414	AZT415	AZT416	AZT417	AZT418	AZT419	AZT420	AZT421	AZT422	AZT423	AZT424	AZT425	AZT426	AZT427	AZT428	AZT429	AZT430	AZT431	AZT432	AZT433	AZT434	AZT435	AZT436	AZT437	AZT438	AZT439	AZT440	AZT441	AZT442	AZT443	AZT444	AZT445	AZT446	AZT447	AZT448	AZT449	AZT450	AZT451	AZT452	AZT453	AZT454	AZT455	AZT456	AZT457	AZT458	AZT459	AZT460	AZT461	AZT462	AZT463	AZT464	AZT465	AZT466	AZT467	AZT468	AZT469	AZT470	AZT471	AZT472	AZT473	AZT474	AZT475	AZT476	AZT477	AZT478	AZT479	AZT480	AZT481	AZT482	AZT483	AZT484	AZT485	AZT486	AZT487	AZT488	AZT489	AZT490	AZT491	AZT492	AZT493	AZT494	AZT495	AZT496	AZT497	AZT498	AZT499	AZT500	AZT501	AZT502	AZT503	AZT504	AZT505	AZT506	AZT507	AZT508	AZT509	AZT510	AZT511	AZT512	AZT513	AZT514	AZT515	AZT516	AZT517	AZT518	AZT519	AZT520	AZT521	AZT522	AZT523	AZT524	AZT525	AZT526	AZT527	AZT528	AZT529	AZT530	AZT531	AZT532	AZT533	AZT534	AZT535	AZT536	AZT537	AZT538	AZT539	AZT540	AZT541	AZT542	AZT543	AZT544	AZT545	AZT546	AZT547	AZT548	AZT549	AZT550	AZT551	AZT552	AZT553	AZT554	AZT555	AZT556	AZT557	AZT558	AZT559	AZT560	AZT561	AZT562	AZT563	AZT564	AZT565	AZT566	AZT567	AZT568	AZT569	AZT570	AZT571	AZT572	AZT573	AZT574	AZT575	AZT576	AZT577	AZT578	AZT579	AZT580	AZT581	AZT582	AZT583	AZT584	AZT585	AZT586	AZT587	AZT588	AZT589	AZT590	AZT591	AZT592	AZT593	AZT594	AZT595	AZT596	AZT597	AZT598	AZT599	AZT600	AZT601	AZT602	AZT603	AZT604	AZT605	AZT606	AZT607	AZT608	AZT609	AZT610	AZT611	AZT612	AZT613	AZT614	AZT615	AZT616	AZT617	AZT618	AZT619	AZT620	AZT621	AZT622	AZT623	AZT624	AZT625	AZT626	AZT627	AZT628	AZT629	AZT630	AZT631	AZT632	AZT633	AZT634	AZT635	AZT636	AZT637	AZT638	AZT639	AZT640	AZT641	AZT642	AZT643	AZT644	AZT645	AZT646	AZT647	AZT648	AZT649	AZT650	AZT651	AZT652	AZT653	AZT654	AZT655	AZT656	AZT657	AZT658	AZT659	AZT660	AZT661	AZT662	AZT663	AZT664	AZT665	AZT666	AZT667	AZT668	AZT669	AZT670	AZT671	AZT672	AZT673	AZT674	AZT675	AZT676	AZT677	AZT678	AZT679	AZT680	AZT681	AZT682	AZT683	AZT684	AZT685	AZT686	AZT687	AZT688	AZT689	AZT690	AZT691	AZT692	AZT693	AZT694	AZT695	AZT696	AZT697	AZT698	AZT699	AZT700	AZT701	AZT702	AZT703	AZT704	AZT705	AZT706	AZT707	AZT708	AZT709	AZT710	AZT711	AZT712	AZT713	AZT714	AZT715	AZT716	AZT717	AZT718	AZT719	AZT720	AZT721	AZT722	AZT723	AZT724	AZT725	AZT726	AZT727	AZT728	AZT729	AZT730	AZT731	AZT732	AZT733	AZT734	AZT735	AZT736	AZT737	AZT738	AZT739	AZT740	AZT741	AZT742	AZT743	AZT744	AZT745	AZT746	AZT747	AZT748	AZT749	AZT750	AZT751	AZT752	AZT753	AZT754	AZT755	AZT756	AZT757	AZT758	AZT759	AZT760	AZT761	AZT762	AZT763	AZT764	AZT765	AZT766	AZT767	AZT768	AZT769	AZT770	AZT771	AZT772	AZT773	AZT774	AZT775	AZT776	AZT777	AZT778	AZT779	AZT780	AZT781	AZT782	AZT783	AZT784	AZT785	AZT786	AZT787	AZT788	AZT789	AZT790	AZT791	AZT792	AZT793	AZT794	AZT795	AZT796	AZT797	AZT798	AZT799	AZT800	AZT801	AZT802	AZT803	AZT804	AZT805	AZT806	AZT807	AZT808	AZT809	AZT810	AZT811	AZT812	AZT813	AZT814	AZT815	AZT816	AZT817	AZT818	AZT819	AZT820	AZT821	AZT822	AZT823	AZT824	AZT825	AZT826	AZT827	AZT828	AZT829	AZT830	AZT831	AZT832	AZT833	AZT834	AZT835	AZT836	AZT837	AZT838	AZT839	AZT840	AZT841	AZT842	AZT843	AZT844	AZT845	AZT846	AZT847	AZT848	AZT849	AZT850	AZT851	AZT852	AZT853	AZT854	AZT855	AZT856	AZT857	AZT858	AZT859	AZT860	AZT861	AZT862	AZT863	AZT864	AZT865	AZT866	AZT867	AZT868	AZT869	AZT870	AZT871	AZT872	AZT873	AZT874	AZT875	AZT876	AZT877	AZT878	AZT879	AZT880	AZT881	AZT882	AZT883	AZT884	AZT885	AZT886	AZT887
------	------	------	------	------	-------	-------	-------	-------	-------	-------	-------	-------	-------	-------	-------	-------	-------	-------	-------	-------	-------	-------	-------	-------	-------	-------	-------	-------	-------	-------	-------	-------	-------	-------	-------	-------	-------	-------	-------	-------	-------	-------	-------	-------	-------	-------	-------	-------	-------	-------	-------	-------	-------	-------	-------	-------	-------	-------	-------	-------	-------	-------	-------	-------	-------	-------	-------	-------	-------	-------	-------	-------	-------	-------	-------	-------	-------	-------	-------	-------	-------	-------	-------	-------	-------	-------	-------	-------	-------	-------	-------	-------	-------	-------	--------	--------	--------	--------	--------	--------	--------	--------	--------	--------	--------	--------	--------	--------	--------	--------	--------	--------	--------	--------	--------	--------	--------	--------	--------	--------	--------	--------	--------	--------	--------	--------	--------	--------	--------	--------	--------	--------	--------	--------	--------	--------	--------	--------	--------	--------	--------	--------	--------	--------	--------	--------	--------	--------	--------	--------	--------	--------	--------	--------	--------	--------	--------	--------	--------	--------	--------	--------	--------	--------	--------	--------	--------	--------	--------	--------	--------	--------	--------	--------	--------	--------	--------	--------	--------	--------	--------	--------	--------	--------	--------	--------	--------	--------	--------	--------	--------	--------	--------	--------	--------	--------	--------	--------	--------	--------	--------	--------	--------	--------	--------	--------	--------	--------	--------	--------	--------	--------	--------	--------	--------	--------	--------	--------	--------	--------	--------	--------	--------	--------	--------	--------	--------	--------	--------	--------	--------	--------	--------	--------	--------	--------	--------	--------	--------	--------	--------	--------	--------	--------	--------	--------	--------	--------	--------	--------	--------	--------	--------	--------	--------	--------	--------	--------	--------	--------	--------	--------	--------	--------	--------	--------	--------	--------	--------	--------	--------	--------	--------	--------	--------	--------	--------	--------	--------	--------	--------	--------	--------	--------	--------	--------	--------	--------	--------	--------	--------	--------	--------	--------	--------	--------	--------	--------	--------	--------	--------	--------	--------	--------	--------	--------	--------	--------	--------	--------	--------	--------	--------	--------	--------	--------	--------	--------	--------	--------	--------	--------	--------	--------	--------	--------	--------	--------	--------	--------	--------	--------	--------	--------	--------	--------	--------	--------	--------	--------	--------	--------	--------	--------	--------	--------	--------	--------	--------	--------	--------	--------	--------	--------	--------	--------	--------	--------	--------	--------	--------	--------	--------	--------	--------	--------	--------	--------	--------	--------	--------	--------	--------	--------	--------	--------	--------	--------	--------	--------	--------	--------	--------	--------	--------	--------	--------	--------	--------	--------	--------	--------	--------	--------	--------	--------	--------	--------	--------	--------	--------	--------	--------	--------	--------	--------	--------	--------	--------	--------	--------	--------	--------	--------	--------	--------	--------	--------	--------	--------	--------	--------	--------	--------	--------	--------	--------	--------	--------	--------	--------	--------	--------	--------	--------	--------	--------	--------	--------	--------	--------	--------	--------	--------	--------	--------	--------	--------	--------	--------	--------	--------	--------	--------	--------	--------	--------	--------	--------	--------	--------	--------	--------	--------	--------	--------	--------	--------	--------	--------	--------	--------	--------	--------	--------	--------	--------	--------	--------	--------	--------	--------	--------	--------	--------	--------	--------	--------	--------	--------	--------	--------	--------	--------	--------	--------	--------	--------	--------	--------	--------	--------	--------	--------	--------	--------	--------	--------	--------	--------	--------	--------	--------	--------	--------	--------	--------	--------	--------	--------	--------	--------	--------	--------	--------	--------	--------	--------	--------	--------	--------	--------	--------	--------	--------	--------	--------	--------	--------	--------	--------	--------	--------	--------	--------	--------	--------	--------	--------	--------	--------	--------	--------	--------	--------	--------	--------	--------	--------	--------	--------	--------	--------	--------	--------	--------	--------	--------	--------	--------	--------	--------	--------	--------	--------	--------	--------	--------	--------	--------	--------	--------	--------	--------	--------	--------	--------	--------	--------	--------	--------	--------	--------	--------	--------	--------	--------	--------	--------	--------	--------	--------	--------	--------	--------	--------	--------	--------	--------	--------	--------	--------	--------	--------	--------	--------	--------	--------	--------	--------	--------	--------	--------	--------	--------	--------	--------	--------	--------	--------	--------	--------	--------	--------	--------	--------	--------	--------	--------	--------	--------	--------	--------	--------	--------	--------	--------	--------	--------	--------	--------	--------	--------	--------	--------	--------	--------	--------	--------	--------	--------	--------	--------	--------	--------	--------	--------	--------	--------	--------	--------	--------	--------	--------	--------	--------	--------	--------	--------	--------	--------	--------	--------	--------	--------	--------	--------	--------	--------	--------	--------	--------	--------	--------	--------	--------	--------	--------	--------	--------	--------	--------	--------	--------	--------	--------	--------	--------	--------	--------	--------	--------	--------	--------	--------	--------	--------	--------	--------	--------	--------	--------	--------	--------	--------	--------	--------	--------	--------	--------	--------	--------	--------	--------	--------	--------	--------	--------	--------	--------	--------	--------	--------	--------	--------	--------	--------	--------	--------	--------	--------	--------	--------	--------	--------	--------	--------	--------	--------	--------	--------	--------	--------	--------	--------	--------	--------	--------	--------	--------	--------	--------	--------	--------	--------	--------	--------	--------	--------	--------	--------	--------	--------	--------	--------	--------	--------	--------	--------	--------	--------	--------	--------	--------	--------	--------	--------	--------	--------	--------	--------	--------	--------	--------	--------	--------	--------	--------	--------	--------	--------	--------	--------	--------	--------	--------	--------	--------	--------	--------	--------	--------	--------	--------	--------	--------	--------	--------	--------	--------	--------	--------	--------	--------	--------	--------	--------	--------	--------	--------	--------	--------	--------	--------	--------	--------	--------	--------	--------	--------	--------	--------	--------	--------	--------	--------	--------	--------	--------	--------	--------	--------	--------	--------	--------	--------	--------	--------	--------	--------	--------	--------	--------	--------	--------	--------	--------	--------	--------	--------	--------	--------



FIGURE 4

***Classical Model of Sex Chromosome Evolution: Y as Decayed X***

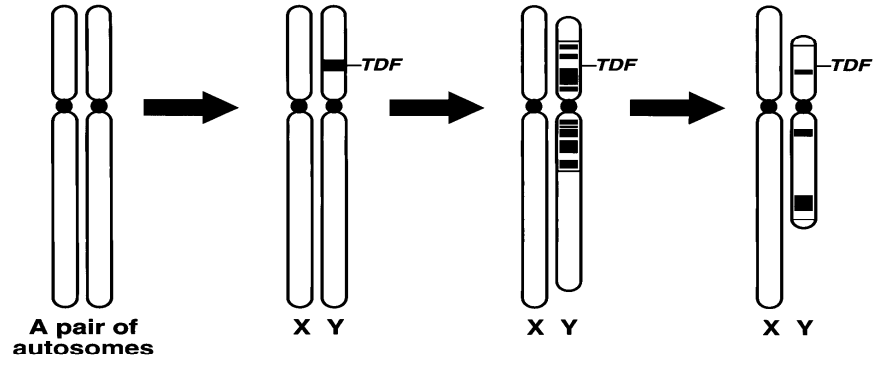


FIGURE 5

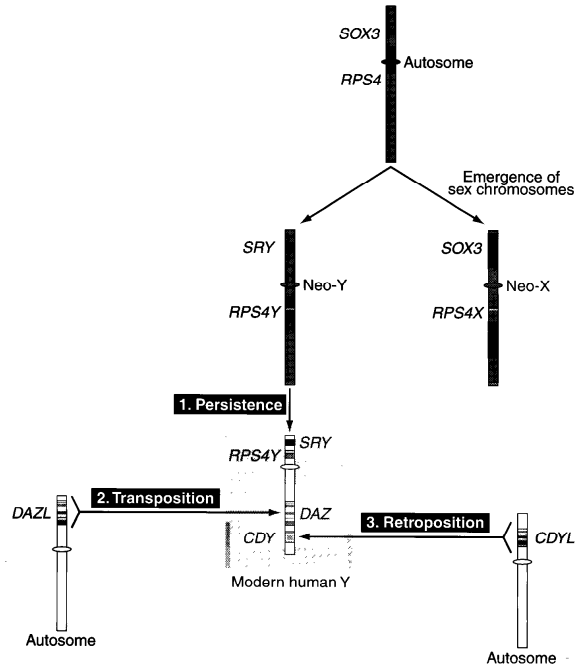


FIGURE 6

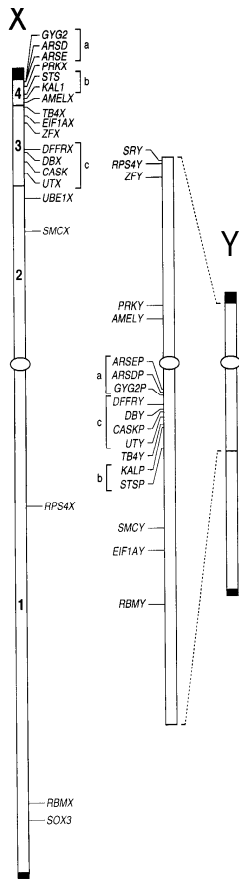


FIGURE 7

**Two Gene Classes Reflect Sequence Organization of NRY**

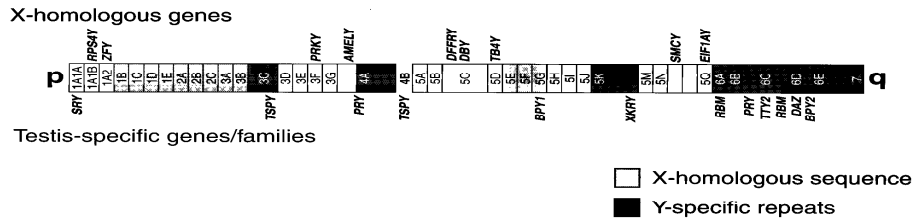


FIGURE 8

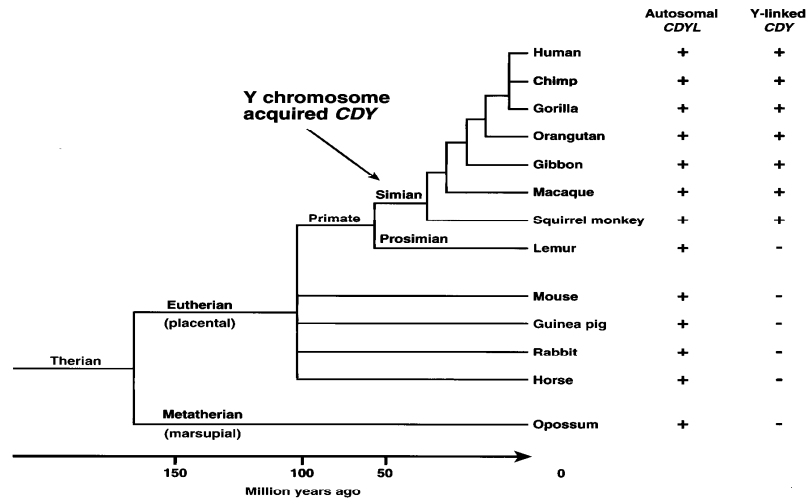


FIGURE 9

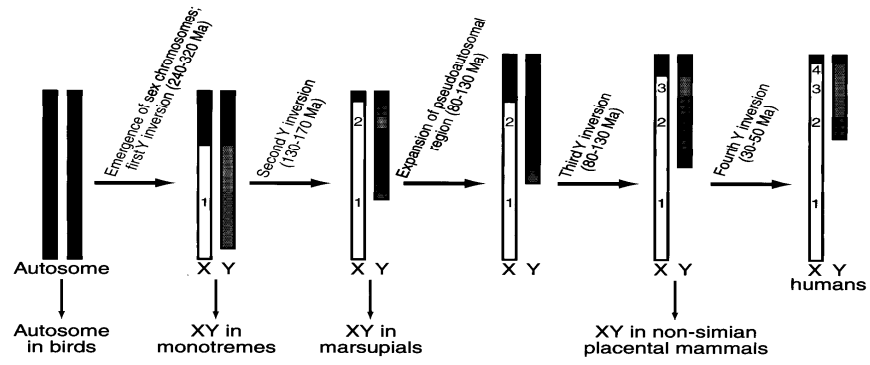


FIGURE 10

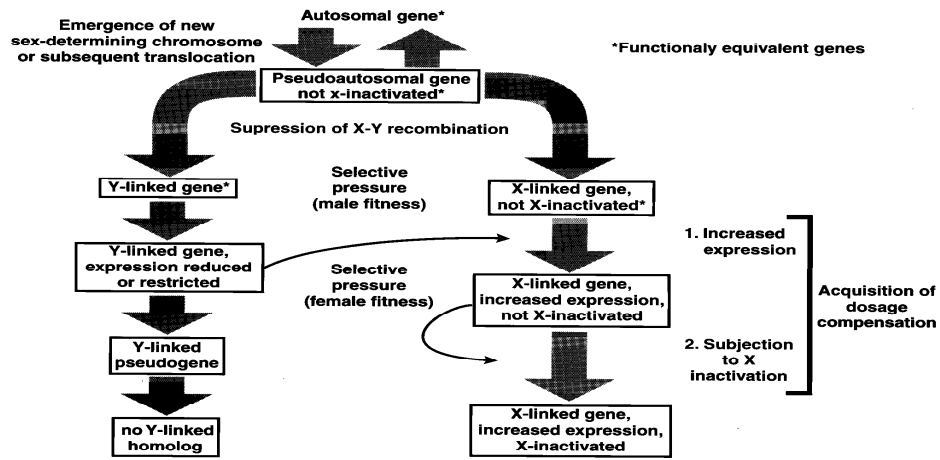


FIGURE 11

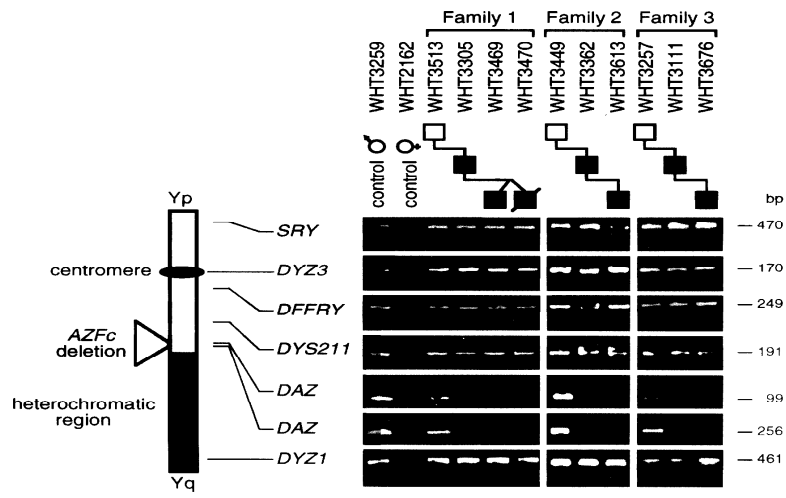


FIGURE 12a

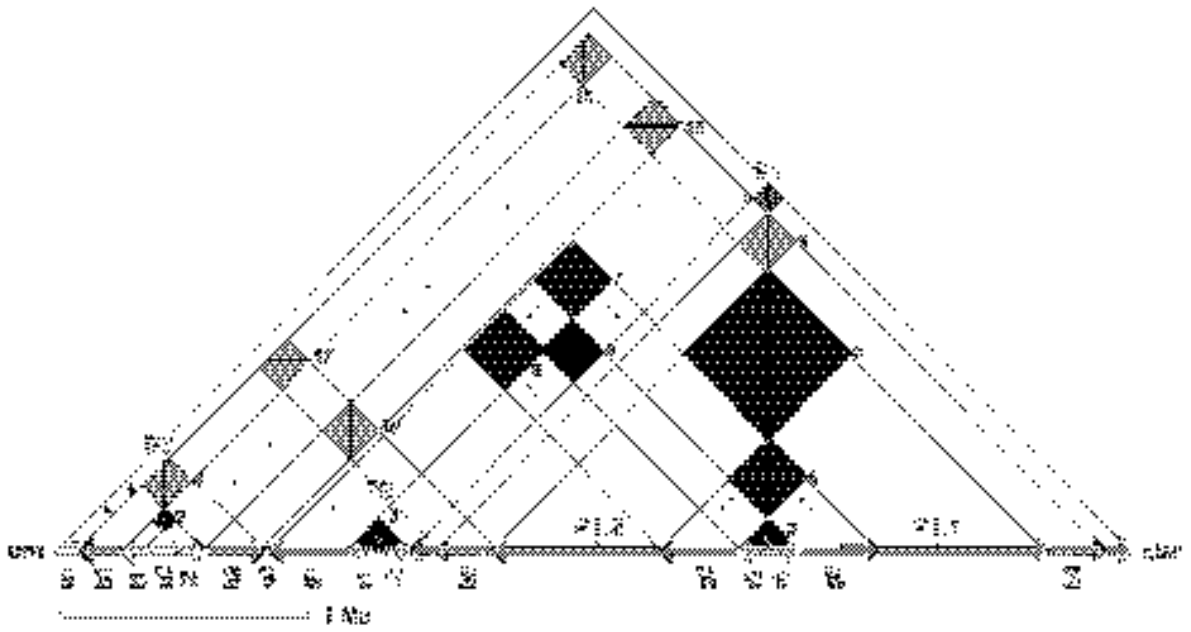


FIGURE 12b

