

# Isodicentric Y Chromosomes and Sex Disorders as Byproducts of Homologous Recombination that Maintains Palindromes

Julian Lange,<sup>1</sup> Helen Skaletsky,<sup>1</sup> Saskia K.M. van Daalen,<sup>2</sup> Stephanie L. Embry,<sup>3</sup> Cindy M. Korver,<sup>2</sup> Laura G. Brown,<sup>1</sup> Robert D. Oates,<sup>4</sup> Sherman Silber,<sup>5</sup> Sjoerd Repping,<sup>2</sup> and David C. Page<sup>1,\*</sup>

<sup>1</sup>Howard Hughes Medical Institute, Whitehead Institute, and Department of Biology, Massachusetts Institute of Technology,

9 Cambridge Center, Cambridge, MA 02142, USA

<sup>2</sup>Center for Reproductive Medicine, Department of Obstetrics and Gynecology, Academic Medical Center, University of Amsterdam, the Netherlands

<sup>3</sup>Institute for Genome Sciences and Policy, Duke University, Durham, NC 27708, USA

<sup>4</sup>Department of Urology, Boston University Medical Center, Boston, MA 02118, USA

<sup>5</sup>Infertility Center of St. Louis, St. Luke's Hospital, St. Louis, MO 63107, USA

\*Correspondence: [dcp@wi.mit.edu](mailto:dcp@wi.mit.edu)

DOI 10.1016/j.cell.2009.07.042

## SUMMARY

Massive palindromes in the human Y chromosome harbor mirror-image gene pairs essential for spermatogenesis. During evolution, these gene pairs have been maintained by intrapalindrome, arm-to-arm recombination. The mechanism of intrapalindrome recombination and risk of harmful effects are unknown. We report 51 patients with isodicentric Y (idicY) chromosomes formed by homologous crossing over between opposing arms of palindromes on sister chromatids. These ectopic recombination events occur at nearly all Y-linked palindromes. Based on our findings, we propose that intrapalindrome sequence identity is maintained via noncrossover pathways of homologous recombination. DNA double-strand breaks that initiate these pathways can be alternatively resolved by crossing over between sister chromatids to form idicY chromosomes, with clinical consequences ranging from spermatogenic failure to sex reversal and Turner syndrome. Our observations imply that crossover and noncrossover pathways are active in nearly all Y-linked palindromes, exposing an Achilles' heel in the mechanism that preserves palindrome-borne genes.

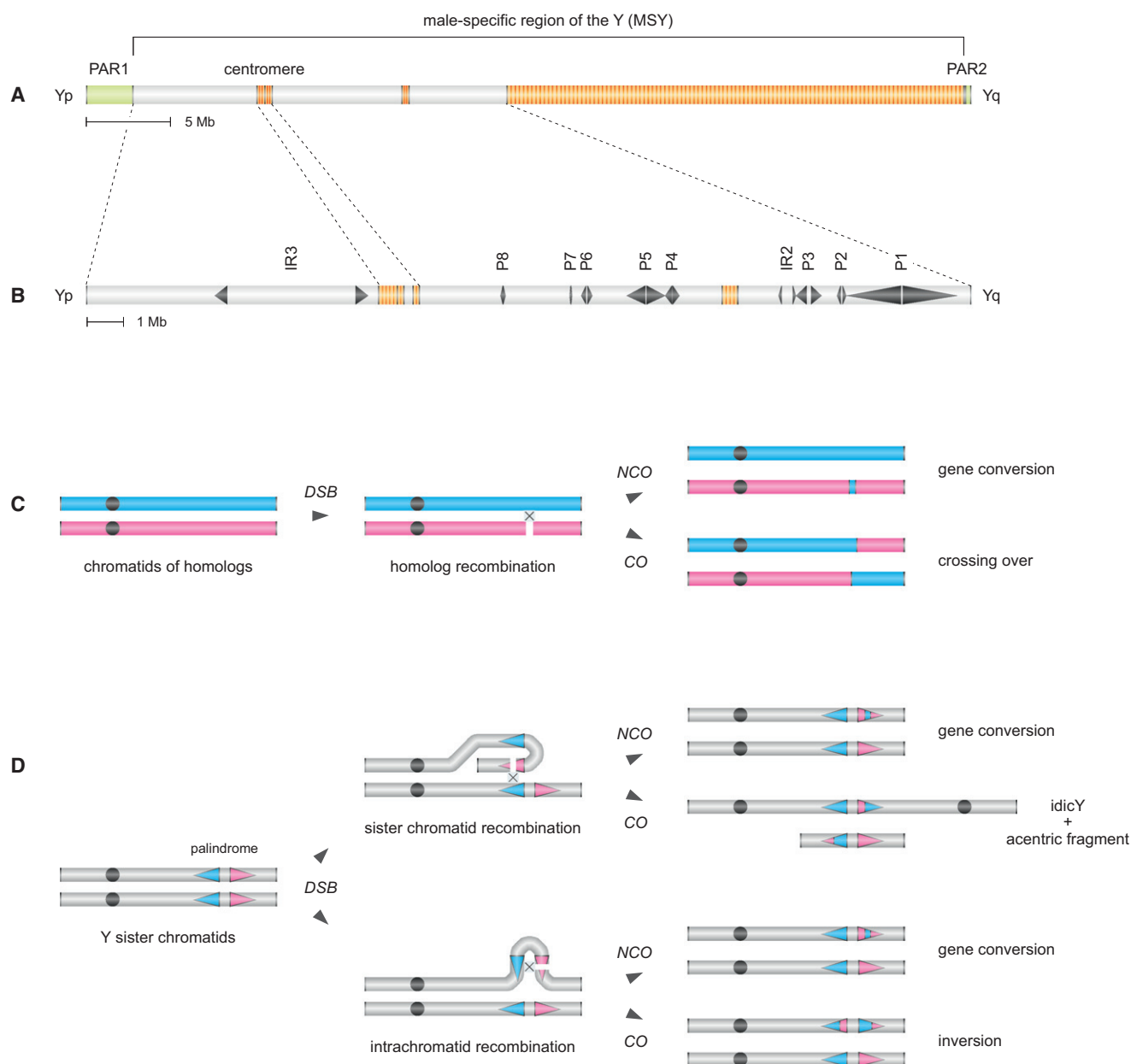
## INTRODUCTION

Since emergence of the mammalian X-Y sex determination system hundreds of millions of years ago, functional specialization of the evolving Y chromosome (chrY) has driven the stepwise suppression of sexual recombination with the X chromosome (chrX), resulting in differentiation of what was once an ordinary

pair of recombining autosomes (Lahn and Page, 1999). Such increasingly limited meiotic exchange has also fostered decay of chrY (Charlesworth and Charlesworth, 2000). Whereas the pseudoautosomal regions of the modern human sex chromosomes continue to pair and recombine, the remaining 95% of chrY, the male-specific region of the Y (MSY; Figure 1A), does not ordinarily recombine with chrX and has retained only a small minority of its ancestral genes (Skaletsky et al., 2003).

Counterpoint to this decay in recombination's absence is provided by massive MSY palindromes that have been maintained by gene conversion. These palindromes (Figure 1B, and Figure S1 available online) harbor mirror-image gene pairs that play critical roles in spermatogenesis. Each palindrome is composed of two large arms separated by a small "spacer" sequence at the center. Ranging in wingspan from 30 kilobases (kb) to 2.9 megabases (Mb), the palindromes comprise 25% of MSY euchromatin (Skaletsky et al., 2003). The palindromes predate divergence of the human and chimpanzee lineages, yet they exhibit arm-to-arm sequence identities of >99.9%. Evidence in modern human lineages of sequence homogenization in MSY palindromes indicates that gene conversion there remains a frequent process (Rozen et al., 2003).

As the mechanistic basis of the gene conversion that maintains MSY palindromes has yet to be elucidated, we considered possible parallels to a better understood process. Meiotic (or mitotic) recombination between homologous chromosomes frequently results in nonreciprocal exchange, or gene conversion, with no crossing over. Such gene conversion is the result of DNA double-strand break (DSB) formation followed by noncrossover (NCO) resolution of those breaks (Figure 1C) (Börner et al., 2004; Guillon et al., 2005). Similarly, we hypothesized that arm-to-arm sequence identity within palindromes might be maintained by DSB formation and NCO resolution, either between sister chromatids or within one chromatid (Figure 1D). Since DSB formation can also lead to crossing over in the case of homologous chromosomes, we further hypothesized that analogous options exist in the case of MSY



**Figure 1. Hypothesized Mechanism of idicY Formation by Homologous Recombination in MSY Palindrome**

(A) Schematic representation of chrY. MSY is flanked by pseudoautosomal regions PAR1 and PAR2 (green) and contains heterochromatic blocks (orange). Yp, short arm; Yq, long arm.

(B) Expanded view of MSY euchromatin, with palindromes P1 through P8 and inverted repeats IR2 and IR3.

(C) Conventional recombination between homologous chromosomes: DSB resolution by NCO and CO pathways yielding, respectively, gene conversion and crossing over. Second chromatid is not shown for each of the two homologs.

(D) Model of homologous recombination in MSY palindromes: DSB resolution by NCO pathways yields gene conversion. Resolution by crossing over between sister chromatids can produce an idicY (and an acentric fragment), while crossing over within a chromatid yields an inversion.

palindrome recombination. A testable prediction of this hypothesis is that interchromatid crossover (CO) resolution of DSBs formed in MSY palindromes might give rise to isodicentric Y (idicY) chromosomes, mirror-imaged chromosomes with an axis of symmetry through the center of the involved palindrome (Figure 1D).

Indeed, idicY chromosomes had been identified through light microscopic studies (Jacobs and Ross, 1966; Hsu, 1994), but their molecular basis and mode of origin remained unknown. Moreover, we suspected that idicY chromosomes might sometimes go undetected or be misidentified in cytogenetic studies because of chrY's small size and paucity of microscopic

landmarks. We thus conducted a broad screen for potential idicY chromosomes by molecular testing, using Y-DNA markers, to capture a large sample and obtain insight into mechanisms of origin. We identified 51 unrelated individuals with idicY chromosomes that evidently formed by homology-mediated crossing over between palindromes on sister chromatids. These idicY chromosomes are associated with a wide range of sex-linked reproductive disorders, including spermatogenic failure, sex reversal, and Turner syndrome.

## RESULTS

We began by reanalyzing DNA samples from 2380 patients studied in our laboratory during the past 25 years (Vergnaud et al., 1986; Vollrath et al., 1992; Reijo et al., 1995; Kuroda-Kawaguchi et al., 2001; Repping et al., 2002) (J.L., H.S., L.G.B., and D.C.P., unpublished data). These individuals had been ascertained by one of two means. Fifteen-hundred and fifty patients were men with spermatogenic failure (<5 million spermatozoa per ml semen; normal >20 million spermatozoa per ml semen), a phenotype often associated with chrY anomalies. In the remaining 830 patients, light microscopy had revealed a structurally anomalous chrY, or a discrepancy between sex chromosome constitution and sex phenotype ("sex reversal").

Employing precisely mapped, Y-specific sequence-tagged sites (STSs) as markers (Vollrath et al., 1992; Lange et al., 2008), we screened genomic DNAs from all 2380 patients for evidence of idicY chromosomes. Most MSY palindromes are located on the long arm (Yq; Figure 1B), where recombination between opposing palindrome arms on sister chromatids should generate idicYp chromosomes, bearing two copies of the short arm (Yp) and centromere but lacking distal Yq (Figure 1D). Accordingly, we searched specifically for idicYp chromosomes.

### 49 Patients with Possible IdicYp Chromosomes Identified by Mapping of Breakpoints to Yq Palindromes

Our initial screen utilized three STS markers: sY14 derives from the sex-determining gene *SRY* and marks the most distal male-specific portion of Yp; sY78 derives from centromeric alpha satellite (*DYZ3*) sequences; and sY1273 marks the most distal male-specific portion of Yq (Figure 2A). Individuals bearing idicYp chromosomes should carry the Yp and centromeric markers, but lack the distal Yq marker. Among 2380 patients tested, we identified 100 cases whose STS signatures were consistent with an idicYp: sY14 and sY78 present, but sY1273 absent. Of these 100 patients, 15 had been shown previously to carry either a Y;autosome translocation, a Y;X translocation, or a ring Y and therefore were not considered further. This left 85 individuals for further scrutiny.

In each of the 85 cases, chrY evidently was broken between centromeric marker sY78 and Yq marker sY1273. To confirm this inference, and to fine-map breakpoints, we assayed additional Yq STSs, including STSs bordering each palindrome (Figures 2B and 2C). In each case, we localized a single Yq breakpoint; all examined STSs proximal to the breakpoint were present, while all those distal to the breakpoint were absent (Figure 2D). In 33 cases, we previously had mapped Yq breakpoints using more limited sets of Y-DNA markers, and in all cases

the present localizations reinforced or refined previous reports (Table S1).

If any of the 85 patients carries an idicYp generated by crossing over between opposing palindrome arms on sister chromatids, then their breakpoint should lie within a Yq palindrome. In fact, in 56 cases, the breakpoint mapped within a palindrome or other inverted repeat. That is, in each case, an STS straddling the palindrome's proximal boundary was present, while an STS straddling the palindrome's distal boundary was absent (breakpoints in blue regions in Figure 2D).

Our model further predicts that the resulting idicYp should retain the central spacer of the targeted palindrome (Figure 2E). We therefore tested spacer-flanking STSs in each of the 56 cases with palindrome breakpoints. In 49 cases, STSs flanking the spacer of the targeted palindrome were present, demonstrating the spacer's integrity (Figure 2D; Table S1, part A). The spacer was absent in six patients (Table S1, part B). One patient displayed a breakpoint within the spacer of inverted repeat IR2 (Table S1, part C).

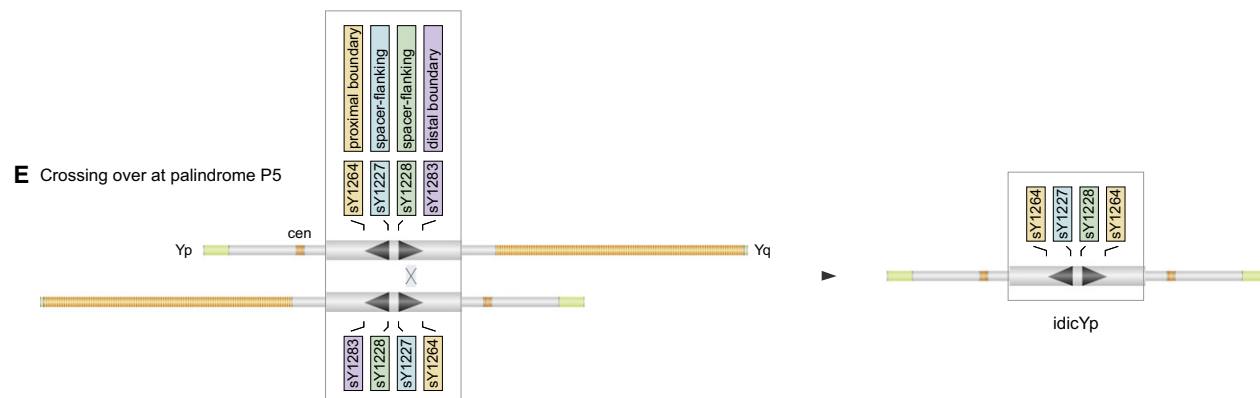
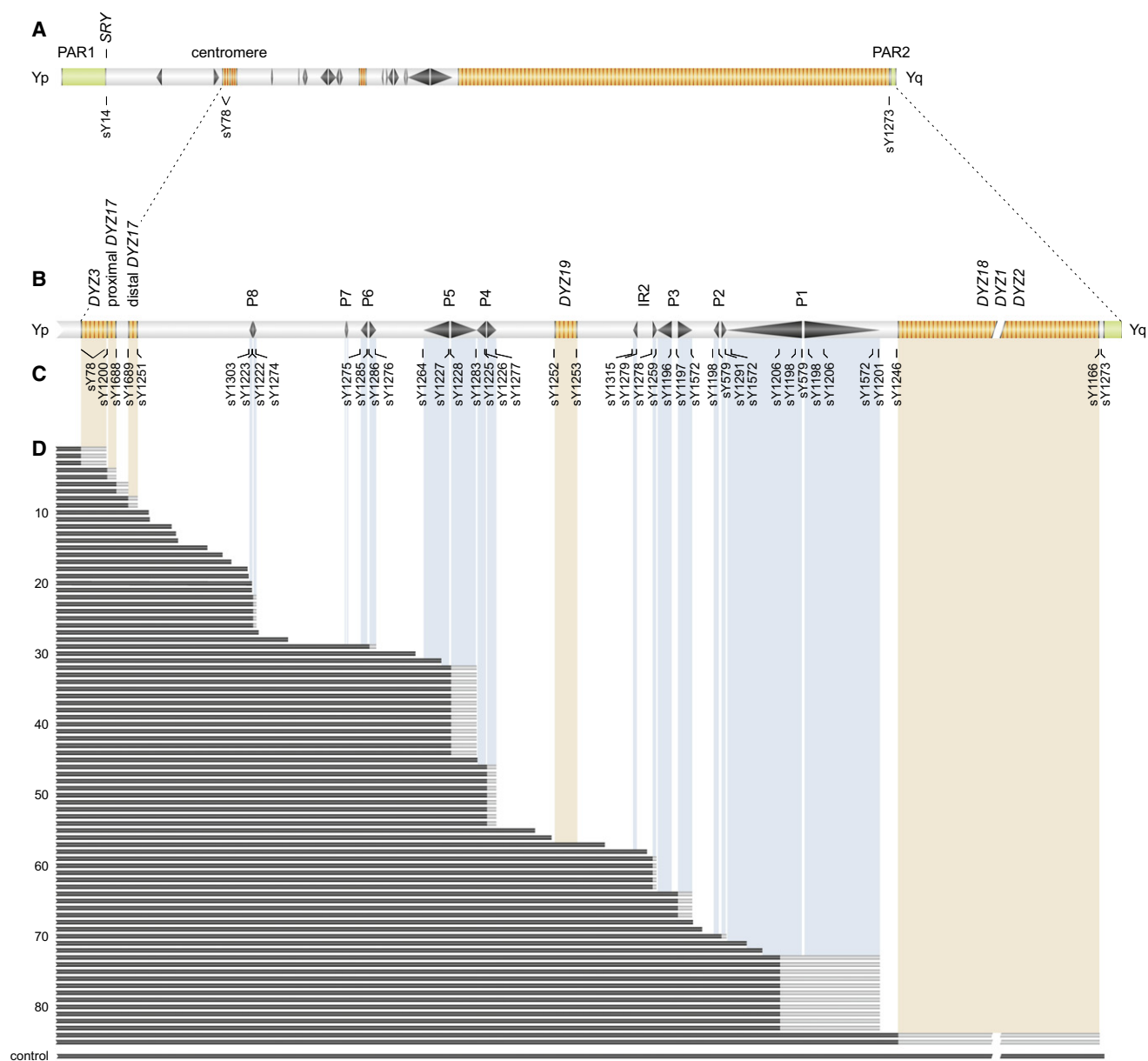
In sum, STS screening identified 49 unrelated cases satisfying two predictions of our model of idicY formation: (1) absence of all chrY sequences distal to a particular palindrome and (2) retention of that palindrome's spacer (Figure 2E). Of nine palindromes and inverted repeats in Yq, all but the smallest (palindrome P7) were targeted in at least one case (Figure 2D; Table S2).

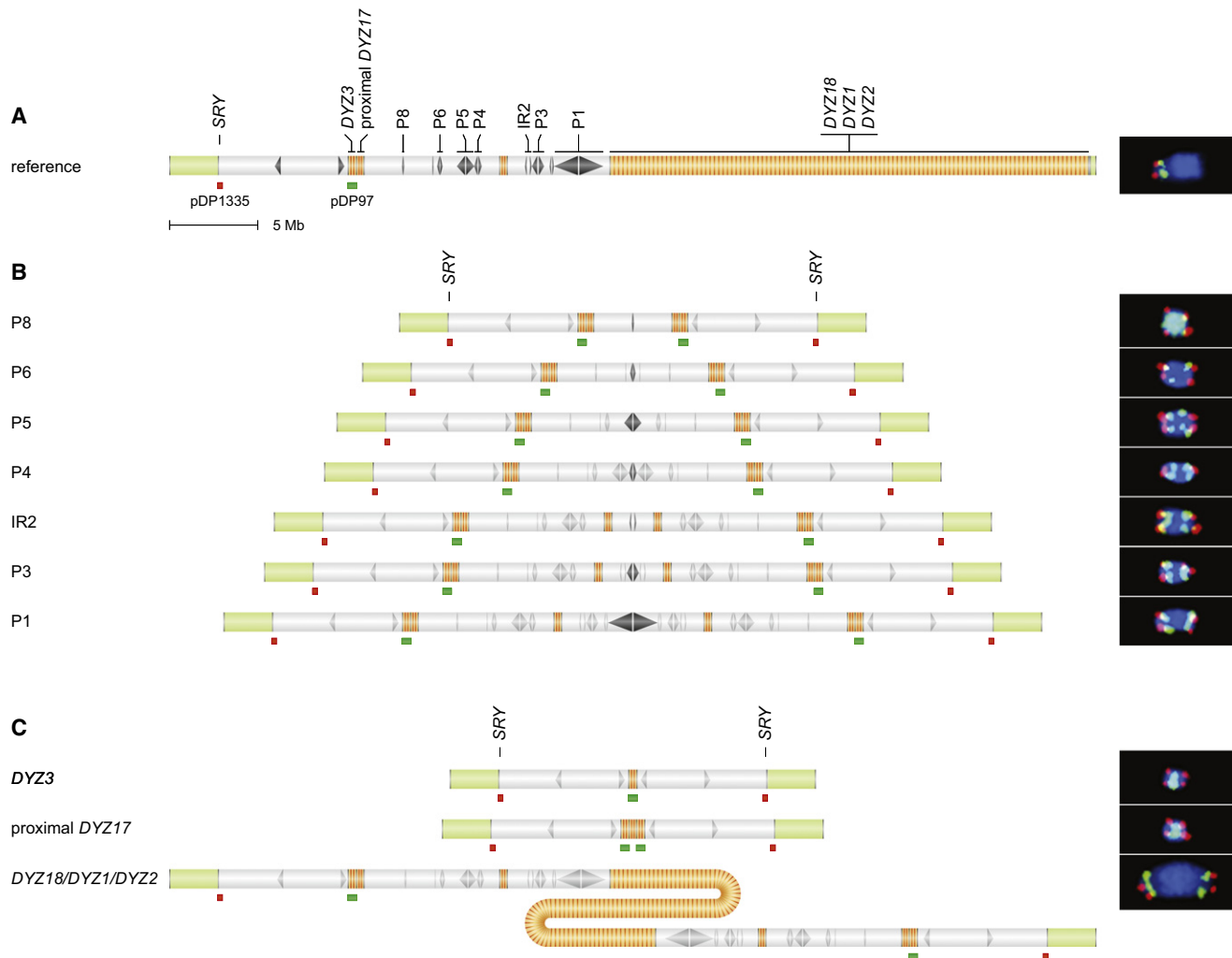
### IdicYp Chromosomes Demonstrated by Metaphase Fluorescence In Situ Hybridization

Our model of idicYp formation by crossing over between opposing palindrome arms on sister chromatids predicts not only loss of some chrY DNA, but also mirror-image duplication of the retained portion of chrY (Figures 1D and 2E). In each of 49 patients identified in our STS screen, the sets of chrY loci retained and deleted were consistent with an idicYp formed by this model. However, neither the copy number of retained loci nor their arrangement could be surmised from these PCR assays. To explore these questions, we turned to fluorescence in situ hybridization (FISH) on metaphase spreads.

An idicYp generated by our model should bear a mirror-image duplication of Yp, the centromere, and the segment of Yq proximal to the targeted palindrome. The more distal the targeted palindrome, the larger the Yq segment retained. For example, the distance from the centromere to palindrome P8 is 2.2 Mb, while the distance from the centromere to palindrome P1 is 11.5 Mb (Figure 3A). Accordingly, the distance between the two centromeres in resulting idicYp chromosomes should increase as more distal palindromes are targeted (see schematics in Figure 3B). We tested these predictions using FISH probes that hybridized to the most distal male-specific portion of Yp (*SRY*) and to centromeric alpha satellite (*DYZ3*) sequences (Figure 3A). We thereby determined the copy number and spatial relationship of the distal Yp locus and centromere. We selected 27 cases for study, including at least one representative for each of the eight targeted palindromes and inverted repeats.

In 25 of 27 cases examined, we detected hybridization of both *SRY* and *DYZ3* on metaphase spreads. In each of these 25 cases, we observed duplication of both Yp and the centromere,





**Figure 3. IdicYp and isoYp Chromosomes Confirmed by Metaphase FISH**

(A) Probe hybridization sites shown below chrY schematic. At right: Hybridization to chrY of normal male control produced expected pattern of red and green signals. Chromosome counterstained with DAPI (blue).

(B) Hybridizations to presumed idicYp chromosomes with breakpoints in Yq palindromes P8, P6, P5, P4, P3, and P1, or in IR2 inverted repeat. Hybridization sites are shown below schematic of each predicted idicYp; targeted palindrome or inverted repeat lies at the center of each schematic. At right: FISH produced predicted red-green-green-red patterns.

(C) Hybridization to presumed isoYp or idicYp chromosomes with breakpoints in heterochromatin. All FISH micrographs are at the same magnification.

as well as the predicted pattern of two centromeres flanked by two Yp arms (Figure 3B; Table S2). Comparison of FISH results across all 25 cases demonstrated an increase in the distance between centromeric signals as more distal palindromes were

targeted (Figure 3B). In the remaining two of 27 cases, we observed no FISH signal for either *SRY* or *DY13*, despite both loci having tested positive by PCR. This discordance may be due to high-grade mosaicism for a 45,X ("XO") cell line. In

**Figure 2. STS Content of Structurally Anomalous Y Chromosomes in 85 Patients with Deletion Breakpoints in Yq or Centromere**

(A) Locations of three STSs assayed in initial screen for Yq or centromeric breakpoints.

(B) Expanded view of centromere and Yq, with palindromes P1–P8, inverted repeat IR2, and heterochromatic blocks (orange).

(C) STSs employed in fine-mapping of breakpoints. These include boundary and spacer-flanking markers for each palindrome and inverted repeat, and markers around each heterochromatic block.

(D) Results of testing DNAs from 85 patients for presence or absence of STSs. Solid black bars encompass STSs found to be present. Gray bars indicate breakpoint intervals that could not be further narrowed because of cross-amplification at other loci. See Figure S2 for identifiers of patients tested.

(E) Predicted molecular signature of idicYp formed by homologous recombination between sister chromatids at palindrome P5. Thirteen individuals with this molecular signature are shown in (D).



sum, we microscopically observed an idicYp in all 25 scorable cases.

### Proposed Mechanism of IdicYp Formation Validated by Interphase FISH

Our results to this point were consistent with idicYp formation via homology-mediated crossing over between opposing palindrome arms on sister chromatids. However, our results could also be explained by recombination between, on one chromatid, a Yq palindrome and, on its sister chromatid, sequences closer to the centromere. These two models yield different predictions regarding the copy number of DNA sequences located immediately proximal to the targeted palindrome (Figure 4A). Whereas our proposed model predicts duplication of these sequences, the alternative explanation predicts that these sequences would not be duplicated.

We designed FISH assays to examine this question. For each targeted palindrome, we isolated a genomic DNA clone or prepared a long-range PCR product that would hybridize specifically to sequences just proximal to that palindrome. For example, probe 15485/15486 hybridizes to a site 44 kb proximal to palindrome P5, and probe 15469/15470 hybridizes to a site 208 kb proximal to IR2 (Figure 4B). Anticipating that metaphase FISH would offer insufficient resolution, we performed FISH on interphase spreads. We tested 23 of 25 cases in which we had confirmed an idicYp on metaphase spreads, including at least one representative for each of seven targeted palindromes. (In the other two cases, metaphase FISH had revealed a very low percentage of cells with an idicYp, likely reflecting mosaicism for a 45,X cell line, and making statistical analysis of interphase nuclei difficult.) To determine the number of probe hybridization sites and thereby differentiate the two models, we scored at least 100 nuclei in each case. In 22 of 23 cases, we found that sequences just proximal to the targeted palindrome were duplicated (Figures 4C, 4D, S3, and S4; Table S2), as predicted by our model.

These findings eliminated the alternative model in all but one case, WHT3189. Further analysis of this seemingly exceptional case confirmed our model. WHT3189 displays a breakpoint in palindrome P1, large blocks of which are repeated in palindromes P2, P3, and P5 (Figure S4). We postulated that WHT3189's idicYp was due to homologous crossing over between sister chromatids, with one recombination point in palindrome P1 and the other in P2, P3, or P5. Additional interphase studies indicated that this idicYp likely arose by homologous recombination between, on one chromatid, palindrome P1, and on the sister chromatid, a 1.1 Mb block of 99.9% sequence identity encompassing palindrome P2 (Figure S4). In sum, in all 23 cases examined, interphase FISH studies validated our model of idicYp formation (Table S2).

### IsoYp and IdicYp Chromosomes Arising from Recombination in Heterochromatin

As described above, of 85 patients with Yq breakpoints potentially relevant to this study, 56 proved to have breakpoints within palindromes. We turn now to the remaining 29 cases, with Yq breakpoints outside palindromes. In 20 of these cases, we map-

ped breakpoints to pericentromeric euchromatin or to nonpalindromic Yq sequences (Figure 2D; Table S1, part D).

In each of the nine remaining cases, we mapped a breakpoint to one of four large blocks of centromeric or Yq heterochromatin (breakpoints in orange regions in Figure 2D; Table S1, part E). These blocks contain tandem arrays of short (5 to 171 basepair) sequence units, and they range in size from about 200 kb (*DYZ17* arrays) to >30 Mb (distal Yq heterochromatin; *DYZ18/DYZ1/DYZ2*) (Skaletsky et al., 2003; Kirsch et al., 2005). In theory, inversion of some repeats within these heterochromatic regions could generate targets for isoYp (monocentric) or idicYp formation by our proposed mechanism. Thus, we explored the possibility that the nine cases with breakpoints in centromeric or Yq heterochromatin carry isoYp or idicYp chromosomes.

We selected three cases with centromeric breakpoints and two cases with distal Yq breakpoints for further study by FISH. Hybridization of *SRY* (distal Yp) and *DYZ3* (centromere) probes to metaphase spreads of these five cases yielded the predicted patterns (Figure 3C; Table S2). In the cases with centromeric breakpoints, we observed two Yp signals flanking one centromeric signal. In the cases with distal Yq breakpoints, we observed two Yp signals flanking two distinct centromeric signals. Thus, isoYp or idicYp chromosomes are present in all five scrutinized cases with centromeric or Yq heterochromatic breakpoints.

Our model predicts the duplication of all retained sequences apart from the targeted heterochromatic regions. We designed additional FISH assays to explore this matter in all five cases. In the two cases with breakpoints in distal Yq heterochromatin, the proximal boundary of this heterochromatin was duplicated, as predicted (Figure 4E; Table S2). Similarly, in the three cases with centromeric breakpoints, a Yp sequence located 280 kb from the centromere was duplicated (Figure S5; Table S2). In sum, these FISH studies are consistent with our proposed mechanism. Future studies may identify inverted repeats within heterochromatic regions that would facilitate isoYp or idicYp formation by this mechanism. Alternatively, isochromosome formation via centromere misdivision (Darlington, 1939) could account for the cases with centromeric breakpoints.

### IdicYq Chromosomes Generated by Recombination at an Inverted Repeat on Yp

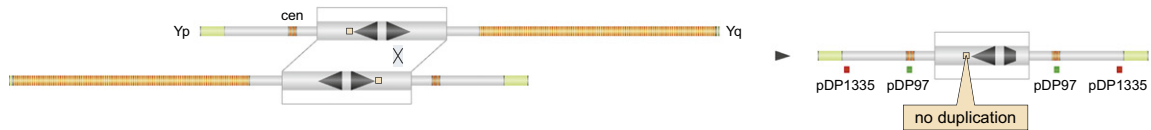
While most MSY palindromes and inverted repeats are located on Yq, the 298 kb arms of inverted repeat IR3 are located on Yp (Figures 1B and 5A). The 3.6 Mb spacer bounded by IR3's arms has been inverted repeatedly during human history (Jobling et al., 1998; Tilford et al., 2001; Skaletsky et al., 2003; Repping et al., 2006). Such inversion might be due to DSB formation in one IR3 arm and intrachromatid resolution of that DSB by crossing over with the other IR3 arm (see Figure 1D). Further, we postulated that interchromatid resolution of such a DSB could generate an idicYq bearing two copies of the centromere and Yq but lacking the portion of Yp distal to IR3.

We screened our collection of patients for such idicYq chromosomes using eight STSs, the first three of which had figured prominently in our idicYp screen: sY14, sY78, and sY1273, which mark distal Yp, centromere, and distal Yq, respectively (Figure 2A). IdicYq chromosomes should lack the distal Yp marker but retain the centromeric and distal Yq markers. The other five

**A** Proposed model: Homologous crossing over between opposing palindrome arms on sister chromatids

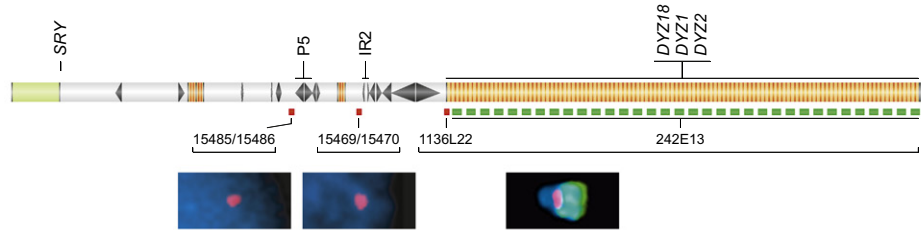


Alternative model: Recombination between, on one chromatid, a Yq palindrome and, on its sister chromatid, sequences closer to the centromere



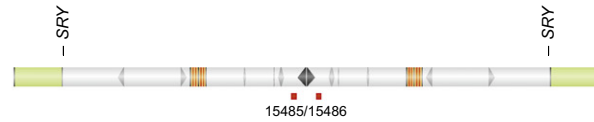
**B**

reference



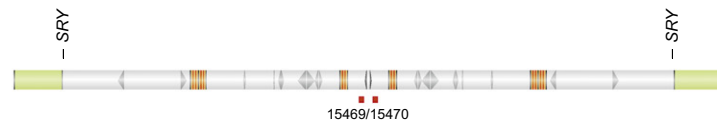
**C**

P5



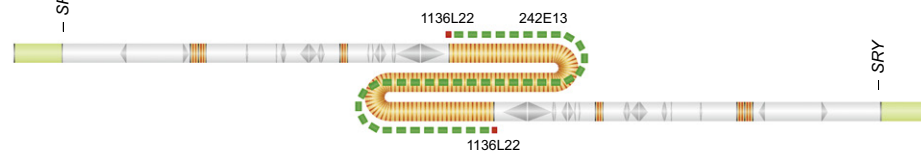
**D**

IR2



**E**

DYZ18/DYZ1/DYZ2



**Figure 4. Duplication in idicYp Chromosomes of Sequences Immediately Proximal to Targeted Palindromes**

(A) Two models of idicYp formation can be distinguished by determining copy numbers of sequences immediately proximal to targeted palindrome.

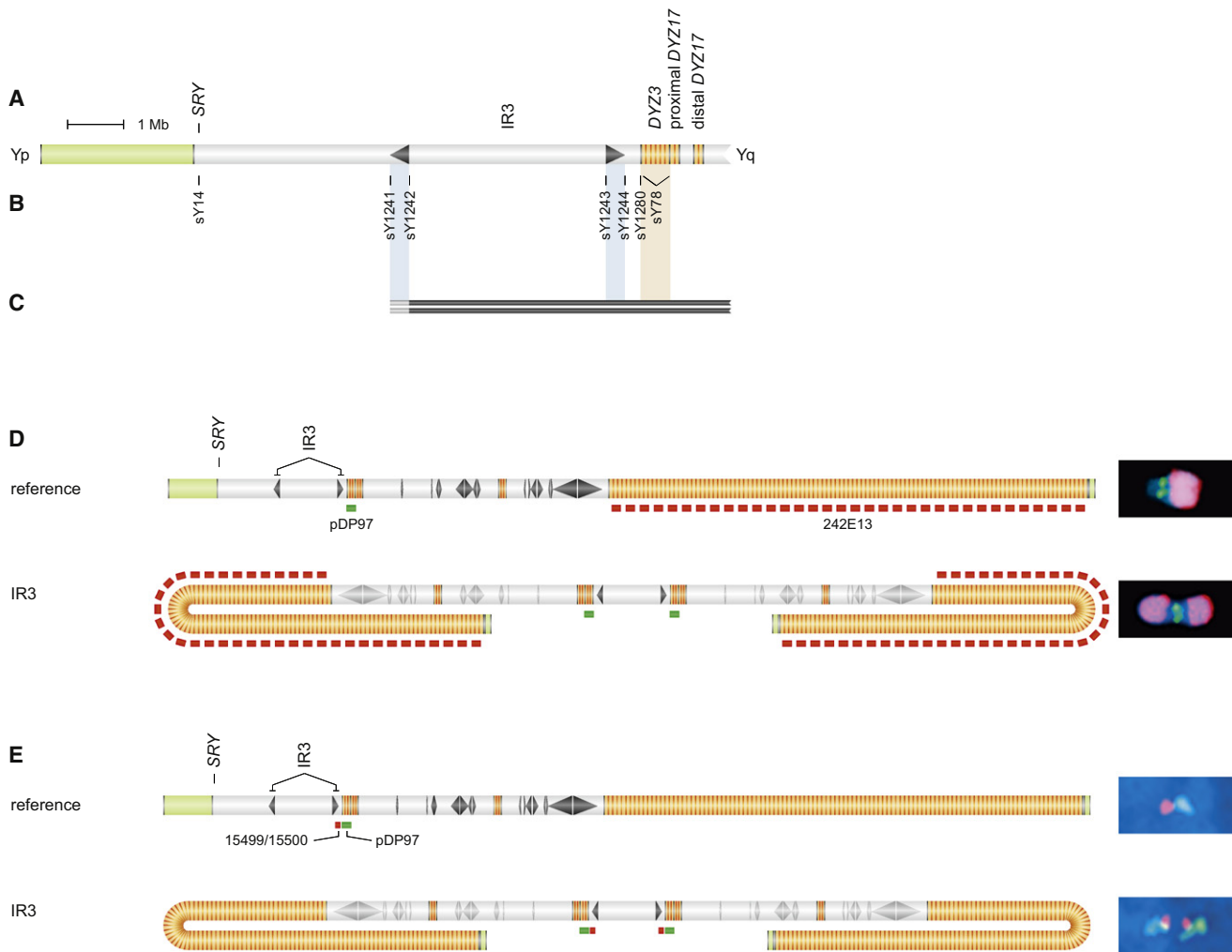
(B) Probe hybridization sites shown below chrY schematic. Hybridizations to chrY of normal male produced expected signals; 15485/15486 and 15469/15470 on interphase spreads, and cohybridization of 1136L22 and 242E13 on metaphase spreads.

(C) Interphase FISH demonstrates duplication of 15485/15486 on idicYp with a breakpoint in palindrome P5.

(D) Interphase FISH demonstrates duplication of 15469/15470 on idicYp with a breakpoint in inverted repeat IR2.

(E) Metaphase FISH demonstrates duplication of 1136L22 on idicYp with a breakpoint in DYZ18/DYZ1/DYZ2 heterochromatin. Cohybridization of 1136L22 (in red) with 242E13 (in green) produced predicted red-green-red pattern.

All micrographs are at the same magnification. In each interphase FISH experiment,  $\geq 100$  nuclei were scored (Figures S3, S4, and S5).



**Figure 5. IdicYq Chromosomes Formed by Crossing Over between Sister Chromatids at Yp Inverted Repeat: STS Content and FISH Analyses**

(A) Schematic representation of Yp and centromeric region.

(B) STSs employed in mapping deletion breakpoints in two individuals in whom sY14 (*SRY*) was absent, and sY78 and sY1273 (Figure 2) were present. These STSs include boundary and spacer-flanking markers for IR3 inverted repeat and a marker in Yp pericentromeric euchromatin.

(C) Results of testing of DNA from two patients for presence or absence of STSs. Solid black bars encompass STSs found to be present. Gray bars indicate breakpoint intervals within IR3's distal arm that could not be further narrowed because of cross-amplification of identical sequences in IR3's proximal arm. See Figure S6 for identifiers of patients tested.

(D) Hybridization of probes pDP97 (to centromeric *DYZ3* repeats), in green, and 242E13 (to *DYZ1* repeats in distal Yq heterochromatin), in red, to metaphase chrY of normal male (above) and to idicYq with breakpoint in IR3 (below). (Metaphase FISH precludes resolution of two centromeric signals in this idicYq.) All images are at the same magnification.

(E) Interphase FISH demonstrates duplication of sequences proximal to IR3 in idicYq. Hybridization of probes 15499/15500 (proximal to IR3), in red, and pDP97, in green, produced expected patterns of red-green on chrY of normal male (above) and green-red-red-green on idicYq with breakpoint in IR3 (below). All images are at the same magnification. Two hundred nuclei were scored (Figure S7).

STSs were as follows: sY1241 and sY1244 straddle the distal and proximal boundaries of IR3, sY1242 and sY1243 flank its 3.6 Mb spacer, and sY1280 marks Yp pericentromeric euchromatin (Figure 5B). In an idicYq formed by crossing over between opposing IR3 arms on sister chromatids, the distal boundary STS should be deleted, but the proximal boundary STS, both spacer-flanking STSs, and the pericentromeric STS should be retained. Among 2380 patients tested, we identified two individuals whose STS data were consistent with an idicYq formed by this model at IR3 (Figure 5C; Table S1, part F). (This screen also would

have identified monocentric isoYq chromosomes with breakpoints in centromeric *DYZ3* repeats, but we found none.)

An idicYq generated by this model should bear a mirror-image duplication of Yq, the centromere, and the segment of Yp immediately proximal to IR3. We used FISH assays to test these predictions in one of the two cases identified by STS screening. Cohybridizing centromeric and distal Yq heterochromatin probes to metaphase chromosomes, we observed the predicted duplication of Yq (Figure 5D). By interphase FISH, we observed mirror-image duplication of the centromere and of sequences



located 28 kb proximal to IR3, all as predicted by our model of idicYq formation at IR3 (Figures 5E and S7).

### Many IdicYp Chromosomes Have Only One Active Centromere

By definition, the idicYp chromosomes that we identified contain two copies of the centromeric region (Figures 3 and 5). If these two regions were to function independently as centromeres, then the idicYp might be vulnerable to damage or loss during mitosis. This raised the question of whether one of the two centromeric regions in the idicYp chromosomes is functionally inactive, as has been observed in many human dicentric chromosomes of X chromosome or autosomal origin (Therman et al., 1974; Hsu et al., 1975; Earnshaw and Migeon, 1985; Wandall, 1989; Page et al., 1995; Page and Shaffer, 1998; Sullivan and Willard, 1998). Specifically, we speculated that among the idicYp chromosomes studied here, those with longer intercentromeric distances would rely more heavily upon functional inactivation of one centromere to achieve mitotic stability, while those with shorter intercentromeric distances would be less dependent upon this mechanism. As other investigators have suggested, when intercentromeric distances are modest, mitotic stability may be achieved because two centromeres function as one, or because close proximity physically constrains them from attaching to opposite spindle poles during mitotic division (Hair, 1953; Niebuhr, 1972; John and Freeman, 1975; Daniel and Lam-Po-Tang, 1976; Camargo and Cervenka, 1984; Therman et al., 1986; Koshland et al., 1987; Page and Shaffer, 1998; Sullivan and Willard, 1998).

We explored these ideas by determining the number of active Y centromeres in cells from 13 patients whose idicYp chromosomes spanned a wide range of intercentromeric distances. We counted active Y centromeres by simultaneously visualizing (1) active centromeres on all nuclear chromosomes and (2) centromeric DNA sequences in idicYp chromosomes. Specifically, we stained metaphase spreads from lymphoblastoid cell lines using antibodies to CENP-E, a protein that localizes exclusively to kinetochores at active centromeres (Sullivan and Schwartz, 1995), followed by FISH to Y centromeric (DYZ3) DNA (Figure 6A). We studied 13 cases in which we had confirmed the presence of an idicYp on metaphase spreads and the duplication of sequences immediately proximal to the targeted palindrome or heterochromatic repeat. These cases encompass the range of observed intercentromeric distances: from 4.5 Mb to roughly 60 Mb (Figures 6A–6D).

In three of 13 cases examined, we detected cell-to-cell variation with respect to centromere activity, with some cells displaying one active centromere on the idicYp and other cells displaying two active centromeres there (Figures 6B, 6D, and S8). These three mosaics for centromere activity had the shortest intercentromeric distances, ranging from 4.5 Mb (recombination at palindrome P8) to 9.1 Mb (recombination at palindrome P6), among the 13 cases tested. All examined cells from each of the ten remaining cases displayed one active centromere on the idicYp (Figures 6C, 6D, and S8). These cases had intercentromeric distances ranging from 12.3 Mb (recombination at palindrome P5) to roughly 60 Mb (recombination at DYZ18/DYZ1/DYZ2 heterochromatin). Thus, all ten tested cases with intercentro-

meric distances of 12.3 Mb or greater displayed one active centromere on the idicYp, while all three tested cases with intercentromeric distances of 9.1 Mb or less were mosaic for one versus two active centromeres. We concluded that functional inactivation of one centromere is commonplace in our series of idicYp chromosomes and is especially manifest among cases with greater intercentromeric distances.

### Sex Phenotype Correlates with Intercentromeric Distance in SRY-Bearing Chromosomes

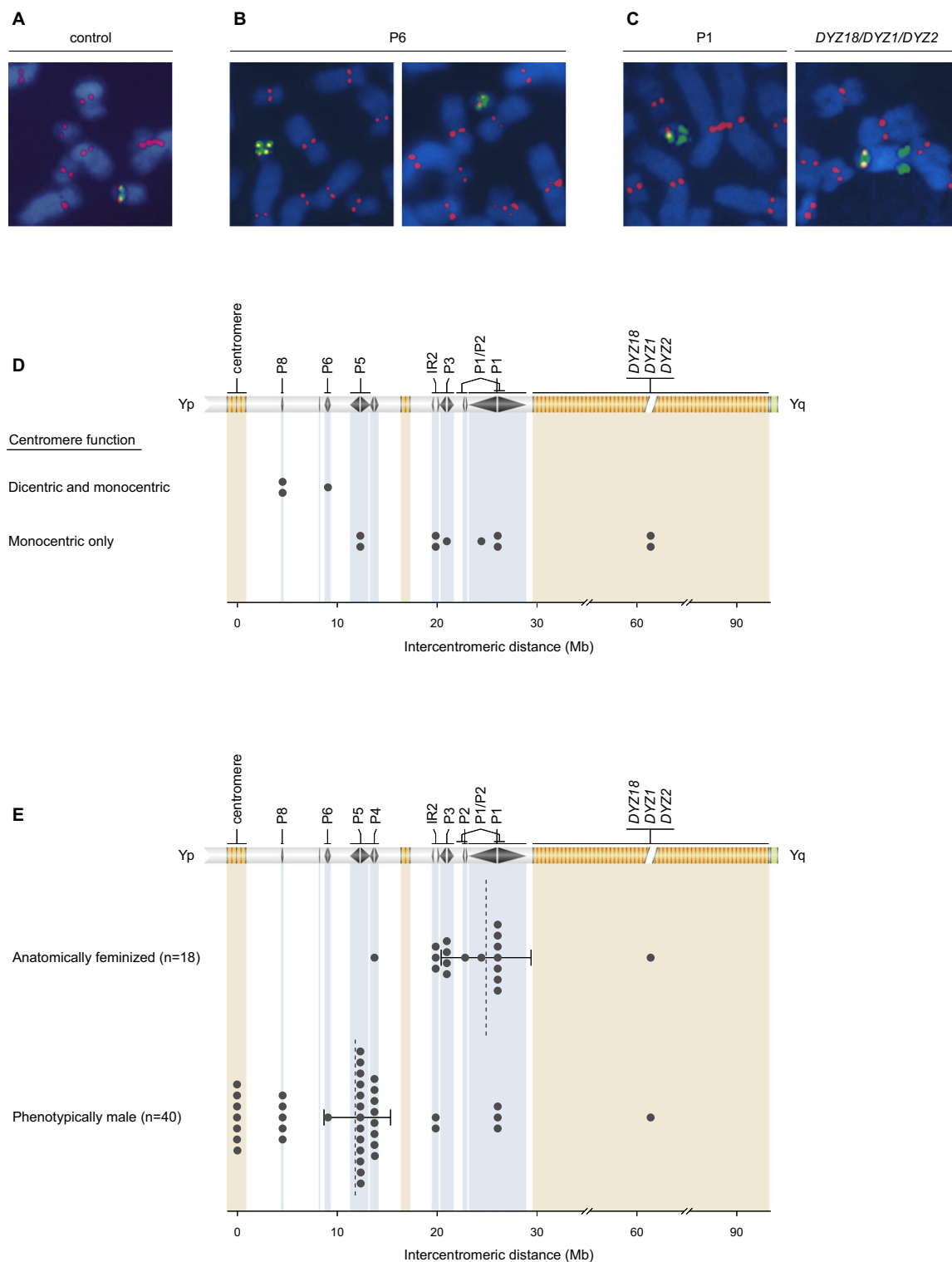
Given chrY's role in masculinizing the fetus, we then sought to correlate the idicYp and isoYp chromosomes that we had characterized with the sexual phenotypes of the individuals carrying them. In humans and mice, the zygote's sexual fate is determined by the presence or absence of a single gene, *SRY*, on chrY (Sinclair et al., 1990; Berta et al., 1990; Jäger et al., 1990; Koopman et al., 1991). Moreover, in mice, studies of XX↔XY chimeras have demonstrated that *Sry* (mouse ortholog of human *SRY*) acts in one and only one cell lineage—the supporting cells of the fetal gonad—to drive testis development and anatomic masculinization in utero (Burgoyne et al., 1988; Palmer and Burgoyne, 1991). In effect, the sexual phenotype at birth provides a retrospective report on the presence or absence of *SRY* in the supporting cell lineage.

Our screen had identified 60 individuals whose STS content was consistent with the presence of an idicY or isoY: 58 have idicYp or isoYp chromosomes with recombination points in palindromes and heterochromatic regions on Yq and in the centromere (Figure 2D), and two have idicYq chromosomes with recombination points in an inverted repeat, IR3, on Yp (Figure 5C). The idicYq chromosomes lack the *SRY* gene, which is located on distal Yp (Figure 5). As expected, the individuals carrying idicYq chromosomes were phenotypic females.

By contrast, the idicYp and isoYp chromosomes each carry two copies of *SRY* (Figure 3). Despite this, 18 of the 58 individuals with such *SRY*-bearing chromosomes (1) were raised as females based on the appearance of their external genitalia at birth and/or (2) were identified in childhood as having one degenerate ovary ("streak gonad") and one testis. To exclude *SRY* point mutations as the cause of this sex reversal, we sequenced the gene's coding region and found it to be intact in all 18 anatomically feminized individuals.

What might account for sex reversal in individuals with *SRY*-bearing chromosomes? We speculated that this reflected mitotic instability of an idicYp—and resultant mosaicism for 45,X ("XO") cells that had lost the idicYp—during embryonic development in these 18 feminized individuals. Further, since mitotic instability might be expected to increase with intercentromeric distance (Hair, 1953; Koshland et al., 1987; Sullivan and Willard, 1998), we hypothesized that, among the 58 individuals with *SRY*-bearing idicYp or isoYp chromosomes, the likelihood or frequency of female anatomic development would rise as intercentromeric distance increased.

To test this prediction, we compared the distributions of intercentromeric distances in the 18 anatomically feminized individuals and 40 phenotypic males with idicYp or isoYp chromosomes (Figure 6E). Whereas recombination points in 16 of 18 feminized individuals were located in the more distal Yq



**Figure 6. Correlates of Intercentromeric Distance in idicYp Chromosomes: Centromere Inactivation and Sex Reversal**

(A) Active chrY centromeres identified by immunofluorescence followed by FISH (IF-FISH). Anti-CENP-E antibody staining, in red, identifies all active centromeres. FISH probe pDP97 (to DYZ3 alpha satellite repeats), in green, identifies chrY centromeric DNA. IF-FISH to chrY of normal male control produced expected signals at single centromere.

(B) IF-FISH to idicYp case with breakpoint in palindrome P6 demonstrates cell-to-cell mosaicism for functionally dicentric (left) or functionally monocentric (right) chromosomes.

palindromes—palindrome P1, P2, P3, or inverted repeat IR2—recombination points in 34 of 40 males were located in more proximal palindromes—P4, P5, P6 or P8—or in the centromeric region. Indeed, all seven individuals carrying isoYp chromosomes, with centromeric breakpoints, were phenotypic males (Figure 6E). Aggregating the data for all 58 individuals with idicYp or isoYp chromosomes, we observed that the average intercentromeric distance in the feminized individuals (24.9 Mb; 95% CI: 20.4–29.4 Mb, bootstrapping method) was twice that in the males (12.0 Mb; 95% CI: 8.7–15.3 Mb), and that this difference was statistically significant ( $p < 10^{-6}$ , Wilcoxon two-sample test). The likelihood of female anatomic development rises sharply with increasing intercentromeric distance in idicYp chromosomes.

### XO Mosaicism in Individuals with IdicYp Chromosomes

This correlation supports the hypothesis that mitotic instability and resultant XO mosaicism cause sex reversal (anatomic feminization) in many individuals with idicYp chromosomes. Two observations provide additional support for this XO mosaicism hypothesis. First, five of the females with idicYp chromosomes exhibited somatic, anatomic features of Turner syndrome, which is classically associated with a 45,X (“XO”) karyotype. This suggests that XO mosaicism is not restricted to the gonadal supporting lineage but extends, in these five individuals, to other cell lineages that contribute to phenotypic components of Turner syndrome. Second, mosaicism for a 45,X (“XO”) cell line had been discovered microscopically, prior to any studies in our laboratory, in 35 of 49 individuals in whom we identified idicYp chromosomes. Taken together, these findings indicate that individuals with 46,X,idicYp cells are frequently mosaic for 45,X cells, and that this mosaicism can give rise to sex reversal or to phenotypic features of Turner syndrome.

### Spermatogenic Failure in Phenotypic Males with IdicYp or IsoYp Chromosomes

Our findings indicate that idicYp or isoYp chromosomes are among the more common genetic causes of severe spermatogenic failure. Eighteen patients in whom we identified such chromosomes were otherwise healthy men with greatly diminished or no sperm production. Moreover, the set of 2380 individuals that we screened included systematically ascertained series of men with various degrees of spermatogenic failure: 293 men with nonobstructive azoospermia (the clinical diagnosis arising from complete failure of sperm production), 207 men with severe oligozoospermia ( $>0$  but  $<5$  million spermatozoa per ml semen), and 81 men with moderate oligozoospermia (5–20 million spermatozoa per ml semen). We found evidence of an idicYp or isoYp in eight (2.7%) of 293 men with nonobstructive azoospermia, but in none of 288 men with severe or moderate oligozoospermia

( $p < 0.01$ , Fisher’s exact test). Given that the population incidence of nonobstructive azoospermia (complete spermatogenic failure) is much lower than that of oligozoospermia (Hull et al., 1985), these data imply that, in the large majority of cases, idicYp or isoYp formation precludes sperm production. In this respect, the consequences of idicYp or isoYp formation appear to be more severe than those of AZFc deletions, which are found in men with either severe oligozoospermia or nonobstructive azoospermia, and which constitute the most frequently recurrent interstitial deletions in chrY (Reijo et al., 1995; Vogt et al., 1996; Kuroda-Kawaguchi et al., 2001). In our series of 293 men with nonobstructive azoospermia, idicYp or isoYp chromosomes were about one third as frequent as AZFc deletions (22 cases, 7.5%). In no case did we observe transmission of an idicYp or isoYp from one generation to the next—at least in the absence of assisted reproduction. In one case, a 46,X,idicYp man with a palindrome P1 breakpoint produced small numbers of sperm sufficient to father a child by intracytoplasmic sperm injection.

Given these severe reproductive deficits, we would expect that each of the idicYp and isoYp chromosomes studied here arose de novo, and thus would not be found in the father of the affected individual. Indeed, in 17 of the cases studied here, the fathers’ Y chromosomes were examined by DNA or light microscopic analysis, and in all 17 cases the fathers’ Y chromosomes were found to be intact (data not shown).

## DISCUSSION

We explored the hypothesis that homologous recombination between opposing arms of MSY palindromes could generate idicY chromosomes. Screening of patients with spermatogenic failure, or with microscopically detected anomalies of chrY, resulted in our identification and characterization of idicY or isoY chromosomes in 60 unrelated individuals. Of these 60 cases, 51 evidently arose via the hypothesized palindrome mechanism (yielding an idicYp in 49 cases and an idicYq in two cases), while the remaining nine arose via recombination in heterochromatic sequences (yielding an idicYp in two cases and an isoYp in seven cases) (Table S2).

Here, we will discuss two topics. First, we will consider the mechanisms of idicY formation, and implications for a comprehensive model of MSY recombination. Second, we will consider the biological and medical consequences of idicY and isoY formation.

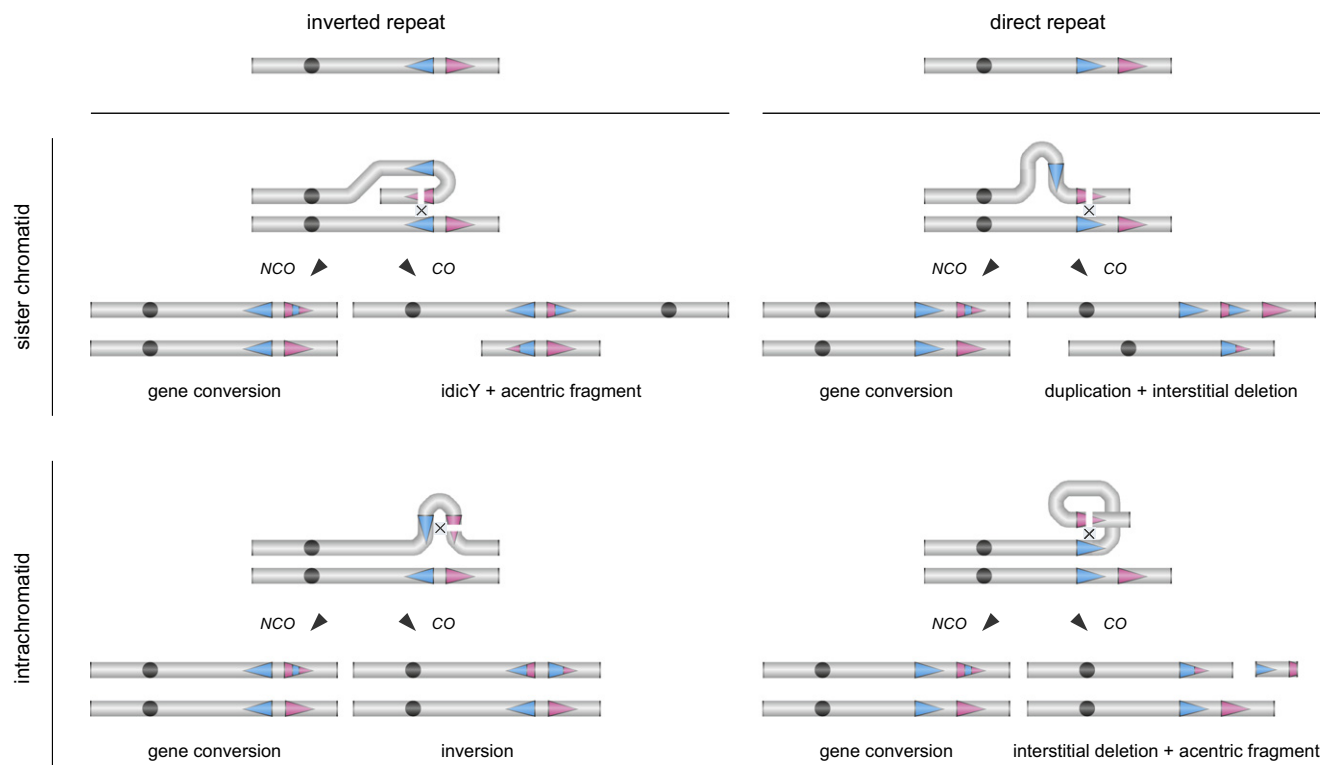
### A Model of MSY Recombination

Our findings, combined with previous results, reveal fundamental, mechanistic parallels between recombination within the MSY and meiotic (or mitotic) recombination between

(C) IF-FISH to idicYp cases with breakpoints in palindrome P1 (left) or in *DYZ18/DYZ1/DYZ2* heterochromatin (right) demonstrates functional inactivation of one Y centromere.

(D) Plots of recombination sites in 13 idicYp cases assayed by IF-FISH and displaying either cell-to-cell mosaicism for functionally dicentric and monocentric idicYp chromosomes (three cases, above) or exclusively functionally monocentric idicYp chromosomes (ten cases, below). For each cell line,  $\geq 20$  idicYp-bearing spreads of good morphology were scored. Among the three cases with cell-to-cell variation, fraction of cells displaying functionally dicentric idicYp chromosomes ranged from 41% to 77%. See Figure S8 for additional data.

(E) Plots of intercentromeric distances in *SRY*-positive idicYp or isoYp chromosomes in 18 feminized individuals (above) and 40 males (below). Dotted lines indicate mean intercentromeric distances for the two groups; 95% confidence intervals calculated by the bootstrapping method.



**Figure 7. Model of DSB Resolution in MSY Direct and Inverted Repeats by NCO and CO Pathways**

Sequence identity between palindrome arms or inverted repeats, and between direct repeats, is maintained by NCO resolution of DSBs; such gene conversion could occur between sister chromatids or within a single chromatid. In the case of palindromes or inverted repeats, CO resolution between sister chromatids can generate an idicY and an acentric fragment, while CO resolution within a chromatid results in inversion. In the case of direct repeats, CO resolution between sister chromatids can generate a duplication and an interstitial deletion, while CO resolution within a chromatid yields an interstitial deletion and an acentric fragment.

homologous chromosomes as studied in yeast and other experimental systems. The resulting expanded model of MSY recombination provides a broad framework for understanding much of the biology of chrY in health and disease.

According to our model, idicY formation and MSY palindrome maintenance are alternative products of a common mechanism reminiscent of conventional recombination between homologous chromosomes (Figure 1C). That common mechanism involves (1) generation of a DSB within one arm of an MSY palindrome and (2) homologous repair of that DSB using the opposing arm of the same palindrome as template. As in conventional meiotic or mitotic recombination between homologs, MSY recombination intermediates generated during DSB repair can be resolved with or without crossing over. Resolution with CO can yield an idicY (when recombination occurs between sister chromatids) or an inversion within the palindrome (when recombination occurs within a chromatid). Alternatively, NCO resolution results in gene conversion and palindrome maintenance. This model provides an economical explanation for all of the following: (1) our present evidence of idicY formation by crossing over between opposing arms of palindromes, (2) previous evidence of gene conversion at these same palindromes (Rozen et al., 2003), and (3) previous evidence of repeated inversion, during human history, of the 3.6 Mb spacer of the IR3 inverted repeats on Yp (Jobling et al., 1998; Tilford

et al., 2001; Skaletsky et al., 2003; Repping et al., 2006). As reported here, idicY chromosomes appear to have arisen via this mechanism at nine of the ten large palindromes and inverted repeats identified in the MSY, suggesting the generality of the model.

An even more inclusive model (Figure 7) stems from the realization that many palindromic sequences are repeated elsewhere in the MSY in direct (as opposed to inverted) orientation (Kuroda-Kawaguchi et al., 2001; Skaletsky et al., 2003). What if a DSB arising within one arm of a palindrome were homologously repaired using the more geographically distant, direct repeat as template? CO resolution would then yield a tandem duplication, or an interstitially deleted chrY lacking the region between the direct repeats—as observed in many men with spermatogenic failure (Sun et al., 2000; Kamp et al., 2000; Blanco et al., 2000; Kuroda-Kawaguchi et al., 2001; Repping et al., 2002; Repping et al., 2003). Alternatively, NCO resolution would result in gene conversion between the direct repeats (Hurles et al., 2004). Such NCO events could explain the high sequence identity observed between widely separated direct repeats in the MSY (Skaletsky et al., 2003). In sum, many aspects of MSY structure, behavior, and evolution are economically explained by DSBs arising within palindrome arms or other lengthy repeats. Homologous repair of these DSBs yields diverse classes of outcomes, these being determined by three binary variables in

the process of repair: (1) inverted versus direct-repeat templates, (2) sister chromatid versus intrachromatid templates, and (3) NCO versus CO resolution (Figure 7).

### The Medical Consequences of IdicYp and IsoYp Formation

In considering the medical significance of our findings, we will focus on idicYp and isoYp chromosomes, as these represent 58 of the 60 isodicentric and isochromosomes identified in this study. We will consider how these chromosomes come to be associated with a wide range of reproductive disorders, ranging from spermatogenic failure in men to sex reversal and Turner syndrome in girls and women.

#### Spermatogenic Failure

We find that idicYp and isoYp chromosomes are among the more common genetic causes of severe spermatogenic failure in otherwise healthy men. IdicYp or isoYp formation probably interferes with sperm production via several distinct mechanisms. First, many idicYp and all isoYp chromosomes lack distal Yq genes that play critical roles in spermatogenesis (Table S3) (Reijo et al., 1995; Vogt et al., 1996; Sun et al., 2000; Kamp et al., 2000; Blanco et al., 2000; Kuroda-Kawaguchi et al., 2001; Repping et al., 2002; Skaletsky et al., 2003; Repping et al., 2003). Second, idicYp or isoYp formation results in duplication of the Yp pseudoautosomal region and deletion of the Yq pseudoautosomal region—outcomes that may disrupt meiotic pairing of chrX and chrY and thereby preclude progression through meiosis (Mohandas et al., 1992). This may help explain why some men with idicYp chromosomes formed at palindrome P1 do not produce sperm despite carrying a full complement of MSY genes (Table S3). Finally, mitotic instability and resultant XO mosaicism in the germline may also contribute to the spermatogenic defects observed in men with idicYp chromosomes formed at palindrome P1.

#### Sex Reversal and Turner Syndrome: Sequelae of Mitotic Instability

While spermatogenic failure may often be a direct consequence of idicYp or isoYp formation, we postulate that sex reversal and Turner syndrome arise indirectly—as consequences of mitotic instability of idicYp chromosomes and the resultant emergence of cells with an “XO” sex chromosome constitution during embryonic and fetal development.

In yeast, and in plant and animal cells, the mitotic instability of dicentric chromosomes becomes more pronounced as the distance between the two centromeres increases (Hair, 1953; Koshland et al., 1987; Sullivan and Willard, 1998). In humans, a positive correlation between intercentromeric distance and mitotic instability had been demonstrated previously in cultured cells (Camargo and Cervenka, 1984; Sullivan and Willard, 1998) but had not been examined in vivo. In the patient series that we report, a readily scored genetic marker—the male-determining gene *SRY*—was located on dicentric chromosomes of varying intercentromeric distance, providing an unusual opportunity to examine these phenomena in vivo. We observed that, in individuals with an *SRY*-bearing dicentric chromosome, the probability of female differentiation increases with intercentromeric distance and the size of the idicYp.

As with most human molecular genetic and cytogenetic studies, our molecular analyses were conducted on cells of the

hematopoietic lineage. It follows that each patient whom we identified as possessing an idicYp retained it in the hematopoietic lineage during the course of his or her development. Inclusion in our study did not require retention of the idicYp in other cell lineages during embryonic, fetal, and postnatal development—as illustrated by the sex reversal observed in 18 of our study subjects.

Consider then the consequences of an alternative scenario in which mitotic instability of an idicYp leads to its loss not only in the gonadal supporting cell lineage but also in the hematopoietic lineage, the standard target of cytogenetic studies. The result would be a phenotypic female with a 45,X (“XO”) blood karyotype who would likely receive a diagnosis of Turner syndrome. This reasoning leads us to conjecture that many 46,X,idicYp zygotes give rise to 45,X Turner females. Conversely, we speculate that many 45,X Turner girls and women developed from 46,X,idicYp zygotes.

Closer examination of our findings, together with published information on the genetic origins of Turner syndrome, lends support to these hypotheses. Unlike trisomy 21 and trisomy X, which are most often the result of nondisjunction in maternal meiosis and whose incidence increases dramatically with maternal age, the incidence of 45,X Turner syndrome does not increase with maternal age, suggesting that maternal nondisjunction is not its principal cause (Warburton et al., 1980; Hassold et al., 1980; Hassold and Chiu, 1985; Hassold et al., 1988; Hassold and Hunt, 2001). Indeed, in about 75% of 45,X girls and women, the single X chromosome is of maternal origin (Jacobs et al., 1997; Uematsu et al., 2002); what is missing or absent in these 45,X<sub>maternal</sub> individuals is a paternally derived sex chromosome, which could be either a chrX or a chrY, or a derivative thereof. We speculate that, in many 45,X<sub>maternal</sub> girls and women, the missing paternal sex chromosome was an idicYp generated in the father's germline and present in the zygote, but lost during subsequent development. Such cases would have been systematically excluded from the present study if the idicYp chromosomes had been lost in the hematopoietic lineage.

A surprising aspect of our data could be explained by such losses. Spanning 2.9 Mb of Yq, palindrome P1 is by far the largest known palindrome in the human genome, and it is by far the most frequent site of interstitial Yq deletions arising via homologous recombination (AZFc and related deletions) (Kuroda-Kawaguchi et al., 2001; Repping et al., 2002; Repping et al., 2003). Palindrome P1 represents 52% of the theoretical target for idicYp formation by the palindrome recombination mechanism proposed here. Nonetheless, in the present study, P1 accounts for only 11 (22%) of the 49 idicYp chromosomes arising via palindrome recombination. We suggest that this apparent “deficit” of P1-derived idicYp chromosomes reflects their loss to mitotic instability during embryonic, fetal, or postnatal development.

In conclusion, our findings underscore the recombinogenic nature of MSY palindromes, and they expand the gamut of associated risks. The prevalence of idicY chromosomes in patients with spermatogenic failure, sex reversal, and Turner syndrome reveals an Achilles' heel in the mechanism by which MSY palindromes and genes are maintained and preserved.



## EXPERIMENTAL PROCEDURES

### PCR Mapping of MSY Breakpoints

Patient genomic DNAs were extracted from either peripheral blood leukocytes or cultured cells, which in most cases were Epstein-Barr-virus-transformed lymphoblastoid cell lines. DNAs were tested for the presence or absence of chrY STSs by PCR with primer pairs cataloged and indexed in MSY Breakpoint Mapper (<http://breakpointmapper.wi.mit.edu/>) (Lange et al., 2008). In addition, all PCR primer sequences and thermocycling conditions have been deposited in GenBank; see Table S4 for accession numbers.

### Fluorescence In Situ Hybridization Analysis of IdicY and IsoY Structure

Metaphase chromosomes for FISH were obtained from lymphoblastoid cells treated with colcemid. Interphase chromosomes were obtained from lymphoblastoid cells by starvation, with no colcemid treatment. FISH probes were labeled by nick translation with biotin-dUTP, digoxigenin-dUTP, Cy3-dUTP, or FITC-dUTP. Biotin-labeled probes were detected by incubation with Cy3-conjugated avidin. Digoxigenin-labeled probes were detected by incubation with mouse anti-digoxigenin antibody followed by incubation with FITC-labeled rabbit anti-mouse IgG antibody. Chromosomes were counterstained with DAPI or propidium iodide. In each interphase experiment that involved the counting of sites of hybridization, at least 100 nuclei were scored. See Table S5 for specific information on individual FISH probes and assays. See the Supplemental Experimental Procedures for details.

### Immunofluorescence-FISH Counting of Active Centromeres

Metaphase chromosomes for immunofluorescence (IF)-FISH were obtained from lymphoblastoid cells treated with colcemid. For IF, anti-CENP-E antibody (Harrington et al., 1997) was detected with Cy3-conjugated donkey anti-rabbit IgG antibody. For FISH, probe pDP97 was labeled by nick translation with SpectrumGreen dUTP (Abbott Molecular). Chromosomes were counterstained with DAPI in mounting medium (Vector Laboratories). For each cell line, at least 20 idicYp chromosome-bearing spreads of good morphology were scored. See the Supplemental Experimental Procedures for details.

### Sequencing of the SRY Gene

The coding sequence of *SRY* was PCR amplified (Table S4, part E) from genomic DNAs of anatomically feminized patients carrying idicYp chromosomes. The resulting PCR products were sequenced on an ABI3730 automated sequencer using the BigDye Terminator protocol (Applied Biosystems).

### Human Subjects

These studies were approved by the Massachusetts Institute of Technology's Committee on the Use of Humans as Experimental Subjects. Informed consent was obtained from all subjects.

## SUPPLEMENTAL DATA

Supplemental Data include Supplemental Experimental Procedures, nine figures, and five tables and can be found with this article online at [http://www.cell.com/supplemental/S0092-8674\(09\)00979-9](http://www.cell.com/supplemental/S0092-8674(09)00979-9).

## ACKNOWLEDGMENTS

We thank the following individuals for patient samples or cell lines: M. Alamares, G. Beverstock, H. Bode, J. Bodurtha, A. Brothman, B. Clark, J. Crawford, A. Daniel, A. Donnenfeld, P. Donohoue, S. Fallet, G. Feole, S. Hahm, K. Harper, D. Hoar, A. Hughes, J. Jacobs, L. Jenkins, D. Manchester, P. McDonough, B. McGillivray, R. McVie, W. Miller, A. Milunsky, C. Palmer, S. Patil, S. Peacock, M. Phelan, J. Priest, J.B. Ravnar, C. Rudlin, L. Shapiro, J. Shulkin, E. Simpson, D. Solomon, C. Stevens, P. Storto, R. Stratton, M. Summers, J. Tollis, J. Vigorita, N. Wang, L. Weiss, V. Wilson, P. Wyatt, T. Yang-Feng, J. Zenger Hain, and J. Zurich. We thank A. Amon, I. Cheeseman, G. Fink, A. Hochwagen, E. Keen, S. Keeney, N. Mohibullah, T. Orr-Weaver, H. Willard, and the Page lab for helpful discussions and comments.

This work was supported by the National Institutes of Health, the Howard Hughes Medical Institute, the Netherlands Organization for Scientific Research, and the Academic Medical Center of the University of Amsterdam. J.L. received a Boehringer Ingelheim fellowship.

Received: May 18, 2009

Revised: July 12, 2009

Accepted: July 22, 2009

Published: September 3, 2009

## REFERENCES

- Berta, P., Hawkins, J.R., Sinclair, A.H., Taylor, A., Griffiths, B.L., Goodfellow, P.N., and Fellous, M. (1990). Genetic evidence equating *SRY* and the testis-determining factor. *Nature* 348, 448–450.
- Blanco, P., Shlumukova, M., Sargent, C.A., Jobling, M.A., Affara, N., and Hurler, M.E. (2000). Divergent outcomes of intrachromosomal recombination on the human Y chromosome: male infertility and recurrent polymorphism. *J. Med. Genet.* 37, 752–758.
- Börner, G.V., Kleckner, N., and Hunter, N. (2004). Crossover/noncrossover differentiation, synaptonemal complex formation, and regulatory surveillance at the leptotene/zygotene transition of meiosis. *Cell* 117, 29–45.
- Burgoyne, P.S., Buehr, M., Koopman, P., Rossant, J., and McLaren, A. (1988). Cell-autonomous action of the testis-determining gene: Sertoli cells are exclusively XY in XX → XY chimaeric mouse testes. *Development* 102, 443–450.
- Camargo, M., and Cervenka, J. (1984). DNA replication and inactivation patterns in structural abnormality of sex chromosomes. I.X-A translocations, rings, fragments, isochromosomes, and pseudo-isodicentrics. *Hum. Genet.* 67, 37–47.
- Charlesworth, B., and Charlesworth, D. (2000). The degeneration of Y chromosomes. *Philos. Trans. R. Soc. Lond. B Biol. Sci.* 355, 1563–1572.
- Daniel, A., and Lam-Po-Tang, P.R. (1976). Structure and inheritance of some heterozygous Robertsonian translocation in man. *J. Med. Genet.* 13, 381–388.
- Darlington, C.D. (1939). Misdivision and the genetics of the centromere. *J. Genet.* 37, 341–364.
- Earnshaw, W.C., and Migeon, B.R. (1985). Three related centromere proteins are absent from the inactive centromere of a stable isodicentric chromosome. *Chromosoma* 92, 290–296.
- Guillon, H., Baudat, F., Grey, C., Liskay, R.M., and de Massy, B. (2005). Crossover and noncrossover pathways in mouse meiosis. *Mol. Cell* 20, 563–573.
- Hair, J.B. (1953). The origin of new chromosomes in *Agropyron*. *Heredity* 6 (Suppl.), 215–233.
- Harrington, J.J., Van Bokkelen, G., Mays, R.W., Gustashaw, K., and Willard, H.F. (1997). Formation of de novo centromeres and construction of first-generation human artificial microchromosomes. *Nat. Genet.* 15, 345–355.
- Hassold, T., and Chiu, D. (1985). Maternal age-specific rates of numerical chromosome abnormalities with special reference to trisomy. *Hum. Genet.* 70, 11–17.
- Hassold, T., and Hunt, P. (2001). To err (meiotically) is human: the genesis of human aneuploidy. *Nat. Rev. Genet.* 2, 280–291.
- Hassold, T., Jacobs, P., Kline, J., Stein, Z., and Warburton, D. (1980). Effect of maternal age on autosomal trisomies. *Ann. Hum. Genet.* 44, 29–36.
- Hassold, T., Benham, F., and Leppert, M. (1988). Cytogenetic and molecular analysis of sex-chromosome monosomy. *Am. J. Hum. Genet.* 42, 534–541.
- Hsu, L.Y. (1994). Phenotype/karyotype correlations of Y chromosome aneuploidy with emphasis on structural aberrations in postnatally diagnosed cases. *Am. J. Med. Genet.* 53, 108–140.
- Hsu, T.C., Pathak, S., and Chen, T.R. (1975). The possibility of latent centromeres and a proposed nomenclature system for total chromosome and whole arm translocations. *Cytogenet. Cell Genet.* 15, 41–49.
- Hull, M.G., Glazener, C.M., Kelly, N.J., Conway, D.I., Foster, P.A., Hinton, R.A., Coulson, C., Lambert, P.A., Watt, E.M., and Desai, K.M. (1985). Population



- study of causes, treatment, and outcome of infertility. *Br. Med. J. (Clin. Res. Ed.)* 291, 1693–1697.
- Hurles, M.E., Willey, D., Matthews, L., and Hussain, S.S. (2004). Origins of chromosomal rearrangement hotspots in the human genome: evidence from the AZFa deletion hotspots. *Genome Biol.* 5, R55.
- Jacobs, P.A., and Ross, A. (1966). Structural abnormalities of the Y chromosome in man. *Nature* 210, 352–354.
- Jacobs, P., Dalton, P., James, R., Mosse, K., Power, M., Robinson, D., and Skuse, D. (1997). Turner syndrome: a cytogenetic and molecular study. *Ann. Hum. Genet.* 61, 471–483.
- Jäger, R.J., Anvret, M., Hall, K., and Scherer, G. (1990). A human XY female with a frame shift mutation in the candidate testis-determining gene SRY. *Nature* 348, 452–454.
- Jobling, M.A., Williams, G.A., Schiebel, G.A., Pandya, G.A., McElreavey, G.A., Salas, G.A., Rappold, G.A., Affara, N.A., and Tyler-Smith, C. (1998). A selective difference between human Y-chromosomal DNA haplotypes. *Curr. Biol.* 8, 1391–1394.
- John, B., and Freeman, M. (1975). Causes and consequences of Robertsonian exchange. *Chromosoma* 52, 123–136.
- Kamp, C., Hirschmann, P., Voss, H., Huellen, K., and Vogt, P.H. (2000). Two long homologous retroviral sequence blocks in proximal Yq11 cause AZFa microdeletions as a result of intrachromosomal recombination events. *Hum. Mol. Genet.* 9, 2563–2572.
- Kirsch, S., Weiss, B., Miner, T.L., Waterston, R.H., Clark, R.A., Eichler, E.E., Munch, C., Schempp, W., and Rappold, G. (2005). Interchromosomal segmental duplications of the pericentromeric region on the human Y chromosome. *Genome Res.* 15, 195–204.
- Koopman, P., Gubbay, J., Vivian, N., Goodfellow, P., and Lovell-Badge, R. (1991). Male development of chromosomally female mice transgenic for Sry. *Nature* 351, 117–121.
- Koshland, D., Rutledge, L., Fitzgerald-Hayes, M., and Hartwell, L.H. (1987). A genetic analysis of dicentric minichromosomes in *Saccharomyces cerevisiae*. *Cell* 48, 801–812.
- Kuroda-Kawaguchi, T., Skaletsky, H., Brown, L.G., Minx, P.J., Cordum, H.S., Waterston, R.H., Wilson, R.K., Silber, S., Oates, R., Rozen, S., et al. (2001). The AZFc region of the Y chromosome features massive palindromes and uniform recurrent deletions in infertile men. *Nat. Genet.* 29, 279–286.
- Lahn, B.T., and Page, D.C. (1999). Four evolutionary strata on the human X chromosome. *Science* 286, 964–967.
- Lange, J., Skaletsky, H., Bell, G.W., and Page, D.C. (2008). MSY Breakpoint Mapper, a database of sequence-tagged sites useful in defining naturally occurring deletions in the human Y chromosome. *Nucleic Acids Res.* 36, D809–D814.
- Mohandas, T.K., Speed, R.M., Passage, M.B., Yen, P.H., Chandley, A.C., and Shapiro, L.J. (1992). Role of the pseudoautosomal region in sex-chromosome pairing during male meiosis: meiotic studies in a man with a deletion of distal Xp. *Am. J. Hum. Genet.* 51, 526–533.
- Niebuhr, E. (1972). Unusual findings by fluorescence microscopy of a t(13q14q). *Humangenetik* 15, 96–98.
- Page, S.L., and Shaffer, L.G. (1998). Chromosome stability is maintained by short intercentromeric distance in functionally dicentric human Robertsonian translocations. *Chromosome Res.* 6, 115–122.
- Page, S.L., Earnshaw, W.C., Choo, K.H., and Shaffer, L.G. (1995). Further evidence that CENP-C is a necessary component of active centromeres: studies of a dic(X; 15) with simultaneous immunofluorescence and FISH. *Hum. Mol. Genet.* 4, 289–294.
- Palmer, S.J., and Burgoyne, P.S. (1991). In situ analysis of fetal, prepubertal and adult XX → XY chimaeric mouse testes: Sertoli cells are predominantly, but not exclusively, XY. *Development* 112, 265–268.
- Reijo, R., Lee, T.Y., Salo, P., Alagappan, R., Brown, L.G., Rosenberg, M., Rozen, S., Jaffe, T., Straus, D., Hovatta, O., et al. (1995). Diverse spermatogenic defects in humans caused by Y chromosome deletions encompassing a novel RNA-binding protein gene. *Nat. Genet.* 10, 383–393.
- Repping, S., Skaletsky, H., Lange, J., Silber, S., Van Der Veen, F., Oates, R.D., Page, D.C., and Rozen, S. (2002). Recombination between palindromes P5 and P1 on the human Y chromosome causes massive deletions and spermatogenic failure. *Am. J. Hum. Genet.* 71, 906–922.
- Repping, S., Skaletsky, H., Brown, L., van Daalen, S.K., Korver, C.M., Pyntikova, T., Kuroda-Kawaguchi, T., de Vries, J.W., Oates, R.D., Silber, S., et al. (2003). Polymorphism for a 1.6-Mb deletion of the human Y chromosome persists through balance between recurrent mutation and haploid selection. *Nat. Genet.* 35, 247–251.
- Repping, S., van Daalen, S.K., Brown, L.G., Korver, C.M., Lange, J., Marszalek, J.D., Pyntikova, T., van der Veen, F., Skaletsky, H., Page, D.C., et al. (2006). High mutation rates have driven extensive structural polymorphism among human Y chromosomes. *Nat. Genet.* 38, 463–467.
- Rozen, S., Skaletsky, H., Marszalek, J.D., Minx, P.J., Cordum, H.S., Waterston, R.H., Wilson, R.K., and Page, D.C. (2003). Abundant gene conversion between arms of palindromes in human and ape Y chromosomes. *Nature* 423, 873–876.
- Sinclair, A.H., Berta, P., Palmer, M.S., Hawkins, J.R., Griffiths, B.L., Smith, M.J., Foster, J.W., Frischauf, A.M., Lovell-Badge, R., and Goodfellow, P.N. (1990). A gene from the human sex-determining region encodes a protein with homology to a conserved DNA-binding motif. *Nature* 346, 240–244.
- Skaletsky, H., Kuroda-Kawaguchi, T., Minx, P.J., Cordum, H.S., Hillier, L., Brown, L.G., Repping, S., Pyntikova, T., Ali, J., Bieri, T., et al. (2003). The male-specific region of the human Y chromosome is a mosaic of discrete sequence classes. *Nature* 423, 825–837.
- Sullivan, B.A., and Schwartz, S. (1995). Identification of centromeric antigens in dicentric Robertsonian translocations: CENP-C and CENP-E are necessary components of functional centromeres. *Hum. Mol. Genet.* 4, 2189–2197.
- Sullivan, B.A., and Willard, H.F. (1998). Stable dicentric X chromosomes with two functional centromeres. *Nat. Genet.* 20, 227–228.
- Sun, C., Skaletsky, H., Rozen, S., Gromoll, J., Nieschlag, E., Oates, R., and Page, D.C. (2000). Deletion of azoospermia factor a (AZFa) region of human Y chromosome caused by recombination between HERV15 proviruses. *Hum. Mol. Genet.* 9, 2291–2296.
- Therman, E., Sarto, G.E., and Patau, K. (1974). Apparently isodicentric but functionally monocentric X chromosome in man. *Am. J. Hum. Genet.* 26, 83–92.
- Therman, E., Trunca, C., Kuhn, E.M., and Sarto, G.E. (1986). Dicentric chromosomes and the inactivation of the centromere. *Hum. Genet.* 72, 191–195.
- Tilford, C.A., Kuroda-Kawaguchi, T., Skaletsky, H., Rozen, S., Brown, L.G., Rosenberg, M., McPherson, J.D., Wylie, K., Sekhon, M., Kucaba, T.A., et al. (2001). A physical map of the human Y chromosome. *Nature* 409, 943–945.
- Uematsu, A., Yorifuji, T., Muroi, J., Kawai, M., Mamada, M., Kaji, M., Yamanaka, C., Momoi, T., and Nakahata, T. (2002). Parental origin of normal X chromosomes in Turner syndrome patients with various karyotypes: implications for the mechanism leading to generation of a 45,X karyotype. *Am. J. Med. Genet.* 111, 134–139.
- Vergnaud, G., Page, D.C., Simmler, M.C., Brown, L., Rouyer, F., Noel, B., Botstein, D., de la Chapelle, A., and Weissenbach, J. (1986). A deletion map of the human Y chromosome based on DNA hybridization. *Am. J. Hum. Genet.* 38, 109–124.
- Vogt, P.H., Edelmann, A., Kirsch, S., Henegariu, O., Hirschmann, P., Kiesewetter, F., Kohn, F.M., Schill, W.B., Farah, S., Ramos, C., et al. (1996). Human Y chromosome azoospermia factors (AZF) mapped to different subregions in Yq11. *Hum. Mol. Genet.* 5, 933–943.
- Vollrath, D., Foote, S., Hilton, A., Brown, L.G., Beer-Romero, P., Bogan, J.S., and Page, D.C. (1992). The human Y chromosome: a 43-interval map based on naturally occurring deletions. *Science* 258, 52–59.
- Wandall, A. (1989). Kinetochore development in two dicentric chromosomes in man. A light and electron microscopic study. *Hum. Genet.* 82, 137–141.
- Warburton, D., Kline, J., Stein, Z., and Susser, M. (1980). Monosomy X: a chromosomal anomaly associated with young maternal age. *Lancet* 1, 167–169.